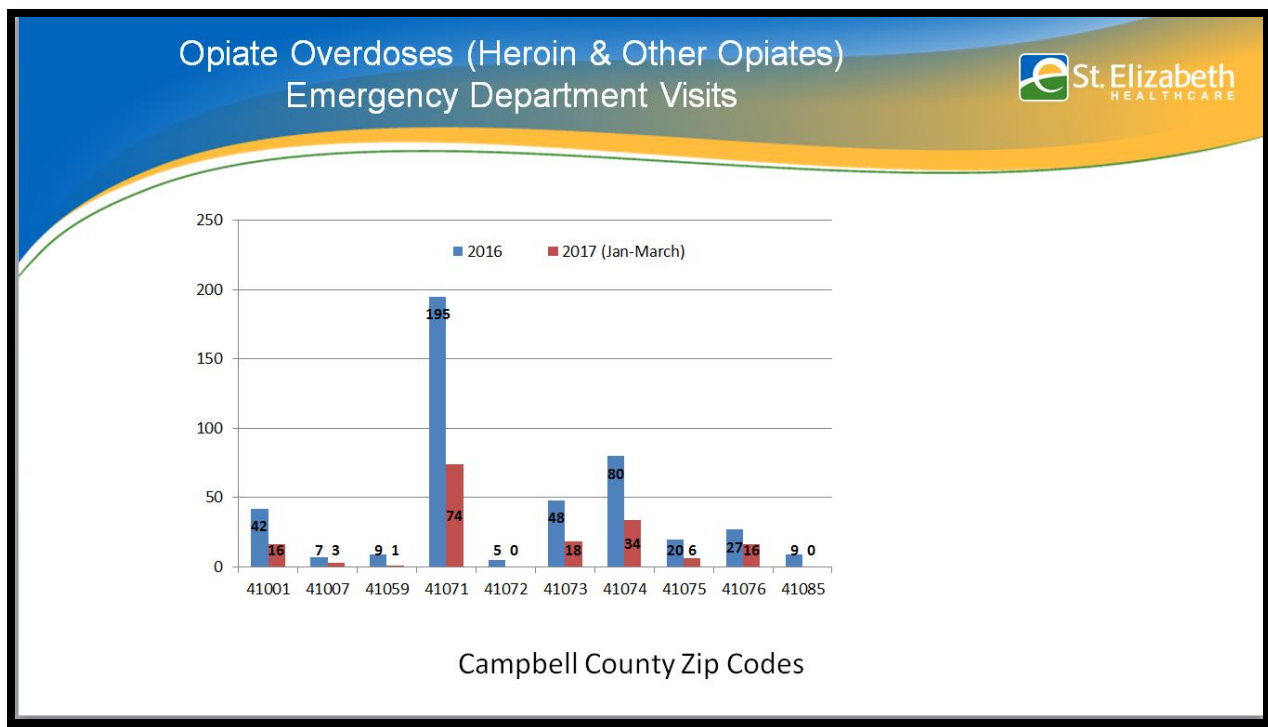


## Brighton Recovery Center – Campbell County – FAQ Sheet

### 1. What is the need in Campbell County for recovery or drug treatment beds?

- Recovery or treatment beds are often cited as a significant gap in services.
  - Included in Heroin Impact Response Team recommendations, other groups such as Regional Prevention Council, and NKY ASAP are supportive of increased treatment options.
- There is a waiting list of 50 women currently at Brighton Recovery Center Florence
  - Typically taking 4-6 months to get in
  - We have 9 years of experience with a model that works
  - Income above 50% of AMI would not be a barrier to admission at the Campbell County location.
- Since opening the BRC in 2008, we have seen 180 women from Campbell County.
- Consistent with creating a stronger continuum of care in Campbell County which includes
  - Help Line
  - New Substance Abuse program in jail and case management
  - Teens Linked to Care Prevention and the Campbell County Drug-Free Alliance
  - Residential treatment.

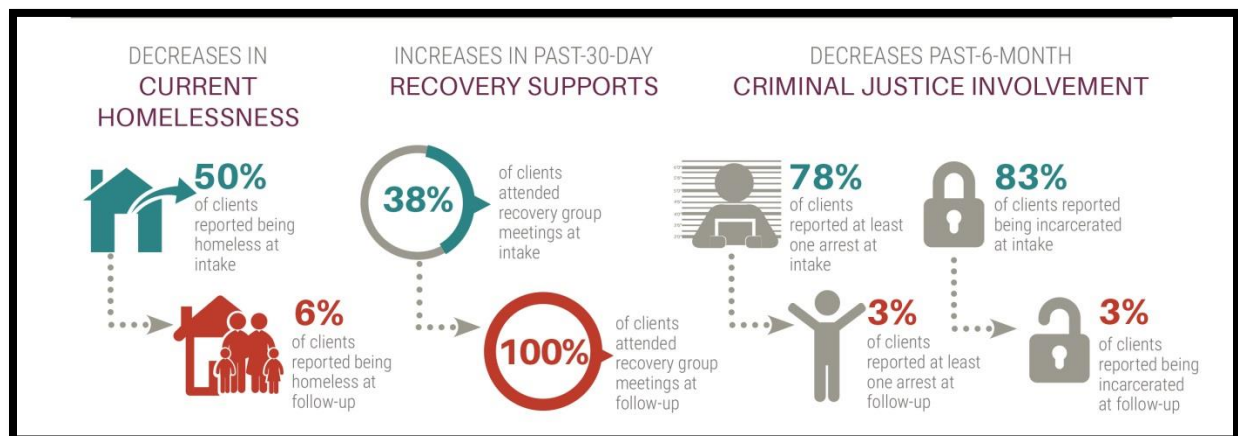
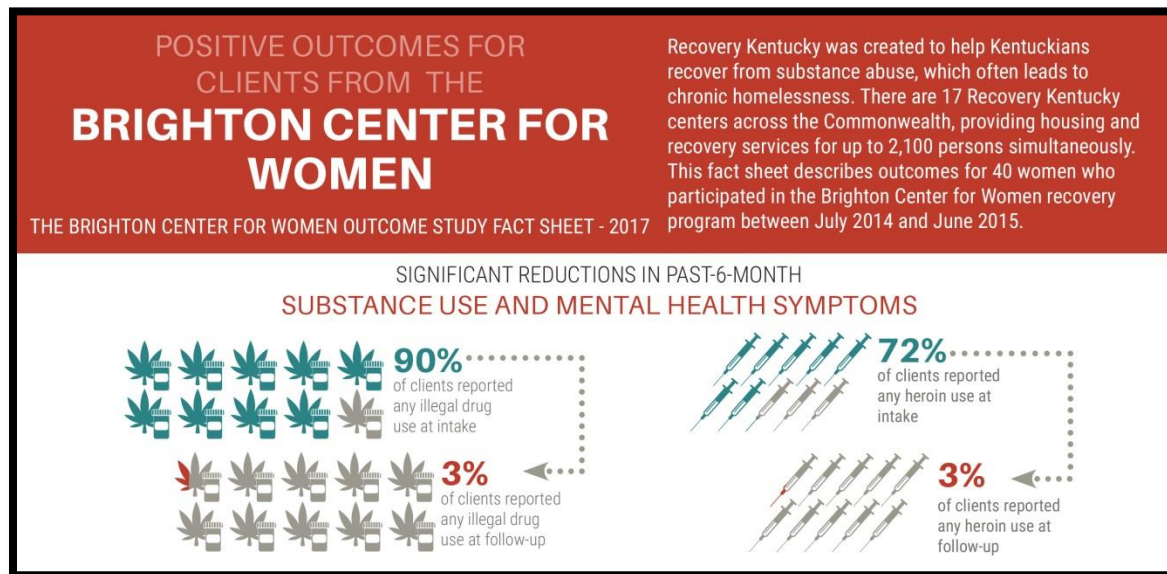
### 2. What is the data to support this project in Campbell County?



- Data from St. Elizabeth Hospital for the past year documents the large increase of drug overdoses seen in the Emergency Room.
- In looking at all emergency departments within St. Elizabeth and all patients who have a Campbell County zip code, we've seen:
  - 422 heroin or opiate overdoses
- Ft. Thomas emergency department from any zip code, is
  - 532 heroin or opiate overdoses,

### 3. What Results has Brighton Center already achieved?

Annual evaluations have been conducted by a third party since 2012. The most recent results are below.



**4. Will you ever use this site for a Methadone Clinic or Needle Exchange Program?**

- No, we are not a medical provider. We will only provide the recovery program as previously described.

**5. Will you be providing Medically Assisted Treatment?**

- In terms of Medication Assisted Treatment, Vivitrol will be the only medication allowed.
- We would work with an addictionologist (General practitioner certified in the area of addiction medicine) to oversee this component. We have made this option available to women at BRC.

**6. How will you keep this project from negatively affecting the neighborhood?**

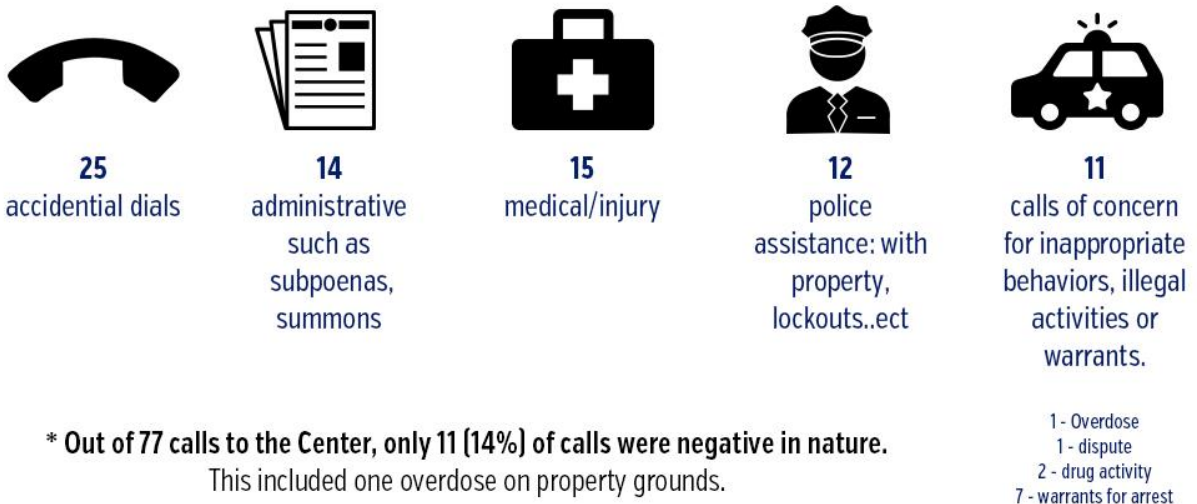
- The barn and gym will remain winterized until an appropriate use can be identified for them. Only the residents will access them if opened.
- Women in the program follow a strict daily schedule and visitors must be approved. Any visitors not approved, will be removed from the property.
- The Peer driven community includes a Safety Team that monitors the entrance and greets all visitors.
- Improved lighting and signage will be provided for the entrance.
- Program procedures will require women to arrange for rides off property, which may be provided by staff, to keep the roadways clear of walkers.
- Staff will address any issues that arise related to the neighborhood.

**7. How will traffic through the area be handled?**

- Traffic can be dispersed through two access points from Dodsworth:
  - One from 1998 and the other from US-27.
- About 10% of the women have cars at our current center, and we would have about fourteen staff in total, however not all would be there at any one time.
- Traffic should be similar to when Campbell Lodge was fully operational with not only residents, but staff, state workers, parents, equine staff, and community members using the gym.
- All walks and trudging will be on the property.

## 8. What about police or ambulance activity?

### Total Police Runs to BRC Florence - April 1, 2016 - March 31, 2017



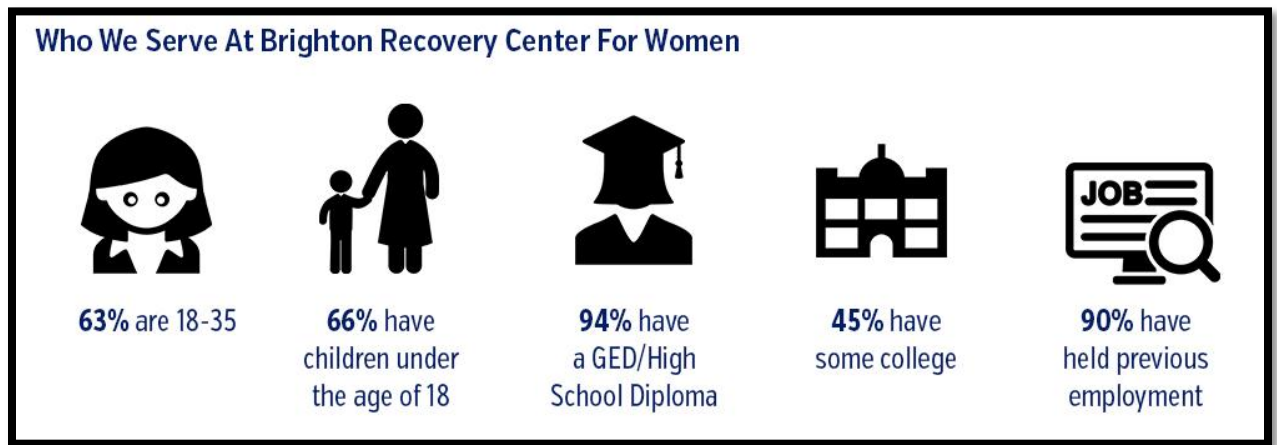
## 9. Why do you think this is a good location for this program?

- From 1958-2012 the property was used as a residential treatment program for adolescent boys.
- The physical structures are there to operate a program, including sleeping rooms, meeting spaces, kitchen/dining room, and offices.
- The grounds are spacious, including 50 acres.
- The zoning is appropriate for a recovery program.

## 10. What are the credentials of the staff who will work there?

- Education requirements range according to the position. The resident monitor positions require at least a high school diploma, with case managers and others requiring relevant degrees.
- All staff must participate in 60 hours of training within their first 3 months of employment and then an additional 16 hours per year after that. All staff must have a good working knowledge of recovery and women's issues.

## 11. What can you tell us about the women currently served?



## 12. How long will it take to get up and running?

- Estimating a 6 month rehab/start-up time frame from the point of acquiring the money to do so.

## 13. What community partners do you work with?

- Alcoholics Anonymous
  - is a critical support for this program
  - Campbell County has an existing network of AA meetings and sponsors available for the women.
- We've contracted with Northern Kentucky University to provide health services.
  - Women go to local physicians and mental health services.
- People Advocating Recovery
- NKY Hates Heroin
- Heroin Impact Response Team
- Many local volunteers would be providing educational groups and workshops for the women.
- Local churches support the women at the Florence location by
  - preparing meals
  - leading crafts with small groups of women
  - taking family photos for the women
  - creating a meditation garden and patio area
  - helping with landscaping
  - transportation to church services and AA meetings
  - leading spirituality classes
- A strong partnership exists with Generations Church where the women trudge during the motivational tracks phase and they sponsor our twice-a-year New Beginnings Ceremonies.

