

hope grows here gala



BRIGHTON CENTER
A COMMUNITY OF SUPPORT

Saturday, May 15, 3021
Virtual Program

Presented By:



BB&T



Leadership Team



Wonda Winkler
President & CEO



Melissa Hall Sommer
Vice President



Talia Frye
Vice President



June Miller
Chief Financial &
Administrative Officer



Lauren Copeland
Development Director



Jen Hansert
Grants & Quality Improvement
Administrator



Mary Decker
Human Resources Director



Tony Herms
Director of Facilities &
Community Development



Kate Arthur
Community & Youth Services
Director



Dellisa Ford Edwards
Early Childhood Education
Director



Jenny Wiley
Family Center Director



Stephanie Stiene
Financial Wellness &
Volunteer Engagement Director



Correy Eimer
Kentucky Career Center
Operator



Anita Prater
Recovery Services Director



Ellen Bates
Workforce Development
Director



Eric Owsley
Workforce Innovation Director

Brighton Center Board of Directors



Tom Stoll, Chair



Dan Gronbeck, Vice Chair



Jill Scherff, Secretary



Julie Sparks, Treasurer



Christy Alwell



Bob Arnold



Jake Bartel



Ken Blackburn



Jodiann Broomall



Bonita Brown



Lisa Yeardon Casson



Sophia Deppenbrock



Shannon O'Connell Egan



Jim Garner



Fred Haas III



Jeremy Hayden



Greta Hoffman Walker



Julie Johnson



Ryan King



Dave Koeninger



Michael Lakin



Heidi Murley



Jason Reed



Annemarie Reilly



Marianne Schmidt Hurt



Maide Session



Jamie Wagner



Wanda Walker-Smith



Katie Walters



Ingrid Washington



Jason Wessel



Brighton Properties Board of Directors



Robert Arnold, Chair



Alicia B. Townsend, Vice Chair



Tom Stapleton, Secretary



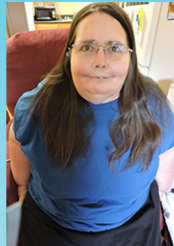
Joe Schamer, Treasurer



Gary Barlow



Brian Crecco



Joyce Duve



Ken Muth



Brooks A. Parker



Laura Sandman



Julie Schoepf



Caroline K. Weltzer

Gala Committee



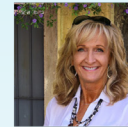
Amy Kremer
St. Elizabeth
Physicians
Gala Committee Member

"We support Brighton Center, because not only do we recognize the amazing work Brighton Center does, but we also enjoy working with you as a community partner! Great work Brighton Center!"



Cliff & Linda
Retired
Gala Committee Member

"We support Brighton Center because we know Brighton Center adapts its services to customers as circumstances change. We value their multigenerational programs."

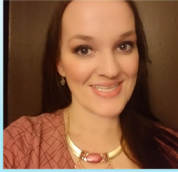


Julie Crow
Helium SEO
Gala Committee Member

"Brighton Center is one of our community's most valuable resources for those that are in need. By volunteering, I hope to help improve the lives of others, make the community a better place, and develop close relationships. When we all come together, we can make the world better by forging those close connections. The relationships that I have developed through volunteering are priceless. Volunteering makes a positive impact on our community, and that makes it better for everyone!"



Gala Committee



Kassie Hatton
Celanese
Gala Committee Member

“When I volunteer at Brighton Center, it means the word to me, because I get to be a part of helping them serve over 46,000 people through 41 programs.”



Maida Session
Duke Energy
Gala Committee Member

“I believe hope is at the root of every success story, and the services Brighton Center provides cultivates the garden where these stories bloom”



Murphy Stephens
St. Elizabeth Physician
Gala Committee Member

“The work that Brighton Center does for the families of NKY is nothing short of amazing; their variety of programs is inclusive of the community’s needs and it is incredibly rewarding to be a part of their growth and mission to help change the lives of NKY residences.”

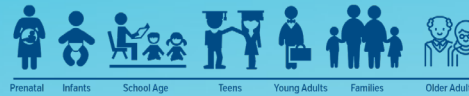
A Community of Support

Our Mission

To create opportunities for individuals and families to reach self-sufficiency through family support services, education, employment, and leadership.

Our Vision

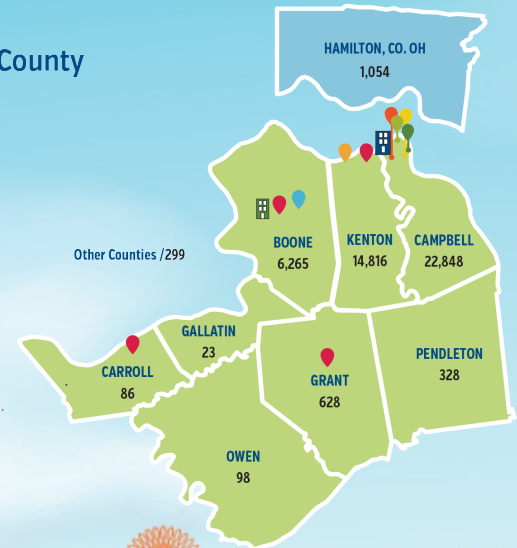
To be an innovative leader that strengthens the vitality of the community and engages people as they work and live to achieve their hopes and dreams.



We serve everyone from infants to older adults across all income levels and from all walks of life.

Individuals Served By County

- 📍 Kentucky Career Center NKY
- 📍 Brighton Recovery Center For Women / Florence
- 📍 Family Center / Newport
- 🏠 Shelby Street Office / Florence
- 📍 Center for Employment Training / Newport
- 🏠 West End / Administration - Newport
- 📍 Homeward Bound Shelter / Covington
- 📍 Bright Days Child Development Center / Newport
- 📍 Northern Kentucky Scholar House / Newport



46,445
Individuals



Partnering with Families

What it Looks Like to Partner with Families on their Journey



Many of the families who turn to Brighton Center have faced obstacles related to finding jobs paying a livable wage, affordable housing, access to quality child care, managing limited finances, and pursuing educational goals without taking on additional debt. Knowing that issues faced by families and communities are complex and that making positive changes require multiple services, Brighton Center is truly a community of support.

We stand alongside families through 41 different programs as they accomplish educational or job training goals, save their home from foreclosure, beat addiction to reclaim their life, celebrate a child who is ready to succeed in kindergarten, or find employment making a livable wage with opportunities for advancement.

Partnering with Families

OUR CONTINUUM OF SERVICES



FAMILY CENTER

- Emergency Assistance
- Club Care
- Stabilization
- Street Outreach
- Stable Families
- Rapid Rehousing
- Clothing Closet
- Safety Net Alliance
- Neighborhood Garden
- Home Instruction for Parents of Preschool Youngsters
- Every Child Succeeds



EARLY CHILDHOOD EDUCATION

- Bright Days Child Development Center
- Early Scholars Child Development Center
- Northern Kentucky Scholar House



COMMUNITY & YOUTH SERVICES

- Youth Street Outreach
- Homeward Bound Shelter
- Independent Living Program
- Youth Leadership Development
- Youth Leadership Development Case Management
- Teens Linked to Care
- Safe Place



WORKFORCE DEVELOPMENT

- Center for Employment Training
- City Futures
- Career Bridge



KENTUCKY CAREER CENTER

- Talent Development Services
- Youth Talent Development Services
- Kentucky Career Center Operator
- Campbell County Chemical Dependency Program



FINANCIAL WELLNESS

- Financial Education
- Financial Coaching
- Homeownership Education
- Homeownership Coaching
- Foreclosure Prevention
- Volunteer Income Tax Assistance
- Senior Support
- Retired & Senior Volunteer Program
- Senior Medicare Patrol
- Volunteer Engagement



RECOVERY SERVICES

- Brighton Recovery Center
- Sober Living
- Center Table Catering

Last fiscal year, we impacted the lives of **46,445** individuals from **infants to older adults** across all **8 counties** of Northern Kentucky and beyond through our **41 programs**



Lives Transformed



No matter what, I knew I could turn to the staff at CET. Whether it was words of encouragement, or assistance with food, basic needs, and keeping a roof over our heads, they were always willing to help with available resources. I truly felt like part of a family. In January 2021, in front of my four kids, instructors, and fellow CET trainees, I walked in a cap and gown for the first time in my life and received my Health Technology Administration completion certificate. I can't even begin to tell you how proud that moment made me feel and how special it was to share with my kids, with whom I am constantly stressing the importance of a good education.

Upcoming Events

Share What You CAN!



Sunday, June 20, 2021
 Tower Park
 Fort Thomas, KY
 7:30 p.m.

Live music by: Catalina Wine Mixer Band

Bring nonperishable food items for our Food Pantry!

FY 20 | July 1, 2019 - June, 30, 2020



6,739

individuals received food, or other basic necessities



1,226

children and their families participated in our Early Childhood Education programs



\$20,120

average wage gain for those who complete Center for Employment Training [CET] and gain employment



1,228

individuals attended orientations or workshops to learn about career opportunities



187

youth received crisis intervention services and 69 received emergency shelter care



379

individuals participated in financial education services



365

women served residentially through Brighton Recovery Center [BRC] for Women



2,823

volunteers spent a total of 26,581 hours assisting programs and customers



Upcoming Events



Freestore Foodbank 2021 Virtual Hunger Walk
Support Brighton Center's Food Pantry

100% of proceeds raised by Team Brighton Center will go
toward hunger relief efforts throughout the community!

Virtually Monday, May 31, 2021

Join our Team: <http://bit.ly/BCHW21>

*Did you know 1 in 7 people in our community are food insecure?
That means 270,000 individuals do not know where
their next meal is coming from.*

Upcoming Events



SAVE THE DATE
Saturday, August 28
Purple People Bridge

**Wine, Food, &
Amazing Views**



sponsorships still available

Directory

Administrative Offices

President & CEO: Wonda Winkler
Vice President: Melissa Hall Sommer
Vice President: Talia Frye
Chief Financial & Administrative Officer: June Miller
Grants & Quality Improvement Administrator: Jennifer Hansert
Director of Development: Lauren Copeland
Director of Facilities & Community Development: Tony Herms
Human Resources Director: Mary Decker

Community and Youth Services

Director: Kate Arthur
13 E. 20th Street
Covington, KY 41014
Phone: [859] 581-1111

Early Childhood Education

Director: Dellisa Ford-Edwards
Bright Days Child Development Center
7th & Park Ave.
Newport, KY 41071
Northern Kentucky Scholar House
450 W. 6th Street
Newport, KY 41071

Family Center

Director: Jenny Wiley
799 Ann Street
Newport, KY 41071

Financial Wellness & Volunteer Engagement

Director: Stephanie Stiene
799 Ann Street
Newport, KY 41071

Kentucky Career Center

Operator: Correy Eimer
Director: Eric Owsley
1324 Madison Avenue
Covington, KY 41011

Workforce Development

Director: Ellen Bates
Center for Employment Training
601 Washington Avenue, Suite 140
Newport, KY 41071

Recovery Services

Director: Anita Prater
375 Weaver Road
Florence, KY 41042
Phone: [859] 282-9390



741 Central Avenue
P.O. Box 325
Newport, KY 41072-0325
Phone: [859] 491-8303
Fax: [859] 491-8702
www.brightoncenter.com

Find us on social



Torch Awards
for Marketplace Ethics

BBB Cincinnati 2020 Winner

Presenting Sponsors



BB&T



Diamond Sponsors



**Fred &
Betty Jo Haas**

Gold Sponsors

Doug & Shelia Bray



Dave & Bet Koeninger



Silver Sponsors



Deloitte.



modelgroup



ROMAR management

Cliff Shisler & Linda Heath | Dr. James & Rachel Votruba

Bronze Sponsors

Robert & Helen Brewster
Central Bank & Trust Company
Tammy & Ken Weidinger
Wonda & John Winkler
Melissa Hall Sommer & Robert Sommer
National Band & Tag
Park National Bank
Wells Fargo Advisors
Rick & Anita Morris
Thomas More University

Shared goals. A can do spirit.
That's community.

At BB&T, we're dedicated to building strong communities by supporting meaningful causes. It's a key part of the service-oriented culture that has defined BB&T for more than 145 years. That's why we're proud to sponsor Brighton Center and their 2021 Hope Grows Here Gala.



All we see is you.®

Member FDIC. Only deposit products are FDIC insured.

BANKING | INSURANCE | INVESTMENTS

I'M RIGHT HERE.

St. Elizabeth is proud to support the Brighton Center for their continued work in the community. Founded in Covington nearly 160 years ago, St. Elizabeth's roots run deep within Northern Kentucky. We provide compassionate and comprehensive healthcare for the people we serve in our home.



stelizabeth.com

AMERICAN MORTGAGE SERVICE COMPANY



Helping Homeowners Since 1975



**american
mortgage®**
Service Co.



11503 Springfield Pike, Cincinnati, OH 45246

NMLS# 8246 FL MLD1080 KY MC23597 MS# 8246 TN# 109042
 AL# 21620 GA# 61661 LA# 8246 OH RM.802615.000 TX# 8246
 AR# 102342 IN# 11063 MI FR0022194 SC MLS-8246 WV ML-31506

**Community
is the
commitment
we make to
each other**

When a community is strong, it's more than a collection of streets and buildings. It's a place that nurtures and helps its residents thrive. That's what happens when people share the commitment to make things better together. That's why we're proud to sponsor Brighton Center.



FIFTH THIRD BANK

Fifth Third Bank, National Association. Member FDIC.
13635

Fred and Betty Jo Haas



Doug & Shelia Bray

Dave & Bet Koeninger

● We make IT all work together



C-Forward is proud to be a VIRTUAL sponsor of

Brighton Center's Gala
and the incredible impact it continues to make in our community!

CForward.com fb.com/CForwardIT 859.442.7877 @CForwardIT

PERSONAL.

PROACTIVE.

RELIABLE.

Building better lives for our customers, communities and each other

Messer is proud to support the
Brighton Center

@messerweareblgd
messer.com



Supporting excellence and
all that it inspires.



At Duke Energy, we believe in the power and potential of excellence and achievement in all forms. Here's to those who inspire us all and enhance our quality of life.

As part of our commitment to communities, Duke Energy is proud to support Brighton Center's 2021 Hope Grows Here Gala.

DUKE-ENERGY.COM

Turner
Building the Future

www.turnerconstruction.com



Eagle Realty Group

A member of Western & Southern Financial Group

Building a Brighter Future - Together

The Barnes Dennig team is here to help you thrive, with innovative insights and game-changing strategies to help you maximize your cash flow and minimize your tax burden.



visit us at barnesdennig.com
to learn more - we're here to help.

Deloitte.



Making an impact everyday

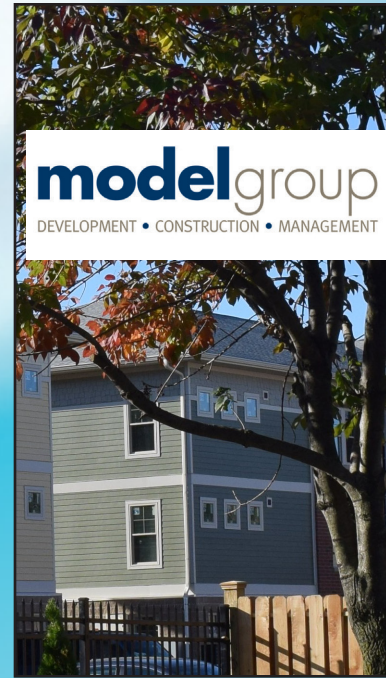
Deloitte is proud to support the 2021 A Night in With Brighton Center — Connecting, Uniting, and Providing HOPE for the Future.

www.deloitte.com

Copyright © 2021 Deloitte Development LLC. All rights reserved.

modelgroup

DEVELOPMENT • CONSTRUCTION • MANAGEMENT



TOGETHER
WE WILL CREATE A
BRIGHTER FUTURE.

Proud sponsor of the
Brighton Center
Virtual Gala

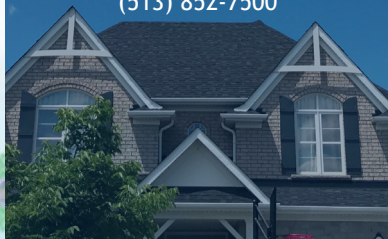
NKU NORTHERN
KENTUCKY
UNIVERSITY

nku.edu

FHLB
CINCINNATI

**BUILDING STRONGER
COMMUNITIES**

Federal Home Loan
Bank of Cincinnati
fhlbcin.com
(513) 852-7500



**Hub+Weber
Architects**

something cool
grows here.



ROMAR
management

**Jake Sieber
Meg Callahan
Mike Sieber**
Housing Specialists

Proudly Serving Brighton
Properties Since 2011

Two Rivers Apartments
Austinburg Apartments
Newport Commons

www.romarmanagement.com



*Cliff
Shisler
& Linda
Heath*



*Dr. James
& Rachel
Votruba*

Robert & Helen Brewster
Central Bank & Trust
Company
Tammy & Ken Weidinger
Wonda & John Winkler
Melissa Hall Sommer &
Robert Sommer
National Band & Tag
Park National Bank
Wells Fargo Advisors
Rick & Anita Morris
Thomas More University

Drink Sponsors

Tito's.



Handmade
VODKA



**THANK YOU TO ALL OF OUR
SPONSORS & SUPPORTERS**