

WE ARE



thriving **CHILDREN**,
strong **FAMILIES**, and
a vibrant **COMMUNITY**.



BRIGHTON CENTER
A COMMUNITY OF SUPPORT

ANNUAL IMPACT REPORT FY23

WE ARE thriving **CHILDREN**, strong **FAMILIES**, and a vibrant **COMMUNITY**.

Since our inception, Brighton Center has believed deeply in the potential of people and that everyone deserves the best quality of life possible. Over the years, we have grown not only in the depth and breadth of programs offered to children, families, and the community, but also in how we deliver services to the whole family built on a collaborative, judgment-free foundation.

There is no wrong door for those seeking assistance. Our customers are empowered from the very start to use their voice, to set the course for their lives, and to believe they are capable of achieving their goals. Our comprehensive continuum of services has grown and evolved out of listening to the needs, hopes, and dreams of our neighbors.

Today, some of our community's most complex, multi-faceted, and interconnected issues are related to workforce development, income-aligned housing families can afford, and overall well-being.

Our work around housing has focused on creative solutions to help families attain quality, safe, and accessible housing within 30% of their income. We also continue to engage in systems-level work around creating a skilled workforce for in-demand career sectors, and a child well-being system that results in strong, supported families who have access to the resources they need to thrive.

Through our strength-based approach and listening to the community we create opportunities for individuals and families to transform their lives, now and for generations to come.

We are excited to share the impact, accomplishments, and success our team, our community of support, and especially our customer's have celebrated.



Wonda Winkler
President & CEO



Dan Groneck
Board Chair

OUR MISSION
To create
opportunities for
individuals and
families to reach
self-sufficiency
through family
support services,
education,
employment, and
leadership.

A COMMUNITY OF SUPPORT

Through our community of support, we partner with individuals and families to help them reach financial stability and independence. Recognizing that the challenges families and communities face are often complex and that making positive change requires long-term holistic and comprehensive services, Brighton Center provides a true community of support through **eight areas of impact** and our **45 programs**.

OUR IMPACT
Last year,
we impacted the
lives of **24,986**
individuals
from infants to older
adults across
all **8 counties** of
Northern Kentucky
and beyond.

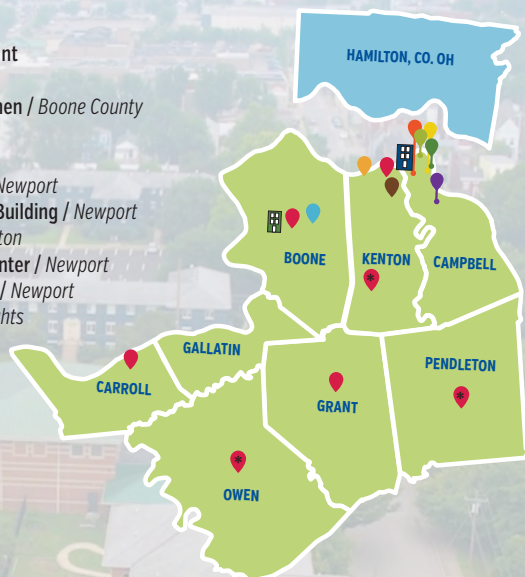


SELF-SUFFICIENCY

To us, self-sufficiency is taking responsibility to provide for yourself and your family, using available resources to maintain the best quality of life possible.

GEOGRAPHIC FOOTPRINT

- ♥ Kentucky Career Center NKY
- ♥ Kentucky Career Center Access Point
- ♥ Thrifting on Eastern / Covington
- ♥ Brighton Recovery Center For Women / Boone County
- ♥ Family Center / Newport
- ♥ Shelby Street Office / Florence
- ♥ Center for Employment Training / Newport
- ♥ Tammy Weidinger Administration Building / Newport
- ♥ Homeward Bound Shelter / Covington
- ♥ Bright Days Child Development Center / Newport
- ♥ Northern Kentucky Scholar House / Newport
- ♥ Opportunity House / Highland Heights



WHO WE SERVE



Prenatal



Infants



Children



Young Adults



Adults & Families



Older Adults



OUR VISION

To be an innovative leader that strengthens the vitality of the community and engages people as they work and live to achieve their hopes and dreams.

WE ARE

making an impact because of your belief in our mission and continuous support as we transform lives.

Our Community Resource Center received a grant to connect individuals and families to the **Supplemental Nutrition Assistance Program (SNAP)** through the state of Kentucky's Kynect portal. As one of a few select agencies designated as a "Kynector," Brighton Center can directly access the Kynect portal to aid in customer's gaining SNAP benefits.



Brighton Center **hosted Governor Andy Beshear** and 12 additional nonprofit agencies in Campbell County as part of his commitment to investing in communities across the Commonwealth. Brighton Center and Brighton Properties received **\$100,000 each** through funding from the Nonprofit Assistance Fund.



In August of 2022, **Opportunity House** opened its doors, welcoming aspiring young adults on their journey to achieving their education and career goals. During the first year, **19** residents were served and more than **80** events focusing on mental health, finances, careers, safety, cooking, and other topics suggested by residents were offered.



In response to the growing number of families impacted by housing complex closures, increased housing costs, and lack of housing within 30% of families' budgets, Brighton Center convened community partners to address these needs. **\$202,428.09** in financial assistance was provided to **404** individuals through funding from the Carol Ann and Ralph V. Haile, Jr. Foundation, United Way of Greater Cincinnati, and other generous funders.



In recognition of their combined tenure and dedication, the **Every Child Succeeds (ECS)** team was honored by the Central ECS team from Cincinnati Children's Hospital Medical Center. In total, over a **20 year span**, the seven staff honored have conducted more than **43,000 home visits** for families in our region.

OUR CORE VALUES

We strive to create an empowering, judgment-free, and collaborative atmosphere for individuals, families, and the community on a path to economic prosperity.

- Everyone has **inherent worth** and **dignity** and will be treated with respect.
- Families and individuals we serve **know their situation best** and are able to **make decisions** that affect their lives.
- We promote strong **relationships** with families and individuals, **partnering** with them to build on their strengths and encourage them to be resources to each other and their community.
- Our dedicated staff are **passionate** about our mission, embrace **growth and leadership**, **change** to best meet customer needs, and are **engaged** in the life of the community.
- Our comprehensive **community-based** services are **responsive, innovative, and life changing**.
- We are **accountable** for the high quality and impact of our services.
- **Community-wide leadership** and **collaboration** result in stronger services and an improved quality of life for our region.
- Commitment to **diversity, inclusion, and racial equity** are imperative to the strength of our organization and community.

WE ARE TRANSFORMING LIVES



Thanks to **294** volunteers who made our annual **Holiday Drive** possible.
2,437 individuals (**818 families**) received holiday meal baskets and toys.
139 children shopped our Used Toy Sale.



The Talent Collaborative of Greater Cincinnati, of which Brighton Center is a founding member, kicked off with a National Fund for Workforce Solutions designation. This brings access to the nation's most cutting-edge best practices in workforce development and financial resources for our community workforce development initiatives.



Mathematica, a nationally recognized research and data analytics consultancy driven by a mission to improve public well-being, recognized Brighton Center nationally as an organization that is intentionally focusing on data equity and integrity to improve services and outcomes for families.



Brighton Center's **Building Community Well-Being's** innovative strategies for transforming the child and family well-being system were highlighted at two national conferences. The team shared the importance of economic and concrete supports for families, the partnership with Kentucky's child-welfare system, and the critical role building community relationships play in the Center's creative approach to system-wide transformation.



Our approach to helping families reach self-sufficiency is based on the philosophy that families become our partners in creating change by sharing their hopes and dreams then setting goals to accomplish them.

Self-sufficiency is a constantly evolving process and we have learned that families move through the continuum based not only on their current situation, but also their long-term goals. These ideas guide our work, our interactions with the community, and our actions in helping people build connections, skills, and a future.

OUR WHY
 We believe deeply in the potential of people, and that everyone deserves the best quality of life possible.



COMPREHENSIVE APPROACH

Our unique continuum of services is combined to address each family member's individual needs. This creates lasting impact and transforms lives, not only by what we do, but how we deliver services strategically while looking toward the future.



Individuals and families working with Brighton Center benefit from the community they build through sharing experiences and achieving common goals. While connecting with others, they build their social capital by supporting and relying on each others strengths, holding each other accountable, and creating opportunities for success. Many programs host alumni groups to ensure that former customers stay connected, allowing them to guide others while expanding their own social network.

Offering bundled services to parents and their children not only reinforces impact, but may also accelerate it. We accomplish this through a service flow that supports entire families and is rooted in having meaningful conversations that develop relationships built on a partnership and early case management utilizing a coaching mentality. Every member of a family is able to set goals and connect to programs that support achieving them.

WHOLE
FAMILY
& 2GEN

BUILDING
SOCIAL
CAPITAL



BUNDLED
SERVICES

CUSTOMER
VOICE



From our founding in 1966, Brighton Center's direction, growth, and programming have been driven by the community with an emphasis on partnerships with families within every level of the organization. Every four years, a Community Assessment is conducted to drive future activities of the organization. In addition, ensuring customers' voices are heard is prioritized, from programs supporting impactful change to working at a systems level to confirm changes made truly benefit the families they serve. Customers' voices are also utilized in Brighton Center's advocacy efforts at the local, state, and national levels.

Brighton Center guides individuals and families through the supports and systems that align best with their hopes and dreams. By working closely across all programs, staff can evaluate each customer's situation and family's unique needs, seamlessly transitioning them through programs without having to start over or retell their stories. When connecting them to programs, staff utilize strong communication and relationship-building methods, often maintaining connections with customers for years after they finish programs through life updates, volunteering, or sometimes returning to obtain employment with a mission they deeply believe in.



We believe our customers deserve the dignity of evidence that our services make an impact. We have over 20 years of experience implementing Continuous Quality Improvement (CQI) efforts. This critical process provides us the opportunity to consistently and intentionally respond to the needs of our customers by defining, measuring, and responding to outcomes. Central to this process is regular data collection that results in frequent program performance evaluation to capture progress towards the goals of a project, ultimately strengthening programs. A key part of this process is understanding how a customer goes through our programs and utilizes services by engaging them to make improvements in processes, strategies, measurement tools, and communication.

Brighton Center utilizes a strength-based approach when working with families. We highlight and reinforce the strengths and skills that individuals already have and build upon them. This helps to develop confidence, a belief that achieving their hopes and dreams is an attainable goal, and an interior motivation to keep building strengths. Our community groups enable individuals and families with shared experiences to identify similar strengths in each other and themselves.

**CONTINUOUS
QUALITY
IMPROVEMENT**

**STRENGTH
BASED
APPROACH**

PARTNERSHIPS

**BEST
PRACTICES**

Through a long history of seeking out and incorporating best practices, Brighton Center ensures families receive evidence-based services that accelerate their journey to reaching self-sufficiency. We have been providing early childhood education services for decades, and we have incorporated brain science into our interventions and approach. Additional best practices we incorporate include: Family Development, Trauma Informed Care (TIC)/Healing Centered Engagement, Financial Coaching, Motivational Interviewing, Behavioral Economics, and Executive Functioning.

If not for strong partnerships and collaborations, Brighton Center could not achieve an integrated, comprehensive, and strategic support system for individuals and families, or assist in strengthening the community. Engaging in over 100 partnerships and collaborations, allows us to leverage expertise and resources that benefit not only Brighton Center customers, but also the entire community.





WE ARE

partnering with FAMILIES to ensure our community has the resources and systems in place to SUPPORT CHILDREN as they LEARN and GROW during the first years of life.



EVERY CHILD SUCCEEDS (ECS)

provides in-home parenting education and support for new moms, dads, and babies in Campbell, Boone, Grant, and Kenton Counties. Home Visitors meet with families weekly and focus on healthy pregnancy outcomes, optimizing child development, and growing strong families. Through hands-on activities, curriculum discussion, family/child groups, and a strength-based approach, families can increase the emotional bond between parent and child, build parental confidence, and enhance family self-sufficiency. Every Child Succeeds was founded by Cincinnati Children's Hospital Medical Center, Cincinnati/Hamilton County Community Action Agency, and the United Way of Greater Cincinnati in response to brain research showing 80% of the brain is developed by the time a child turns 3-years-old. Every Child Succeeds programming is based on strong scientific evidence that a nurturing and stimulating environment is essential to support cognitive, social, emotional, and behavioral development.

HOME INSTRUCTION FOR PARENTS OF PRESCHOOL YOUNGSTERS (HIPPY)

provides home visitation services for Boone, Campbell, and Kenton County families with children ages 2-5 that focus on helping parents prepare their preschool children for success in school. HIPPY is a developmentally appropriate, early literacy curriculum designed to promote children's cognitive, social, emotional and physical development. The curriculum consists of a set of easy-to-use educational activity packets and storybooks. Parents engage with the curriculum by role playing the parent-child activities with a Home Visitor who is from the same community, and often a former HIPPY parent.

Parenting Services programs are designed to work in partnership with families. Parents and caregivers gain confidence through supportive relationships with home visitors using strength-based tools and curriculum that prepare them for the birth and formative years of their child while empowering them to be their child's best and first teacher.



556

children and their parent/
families participated in
Every Child Succeeds (ECS)



4,774

home visits were conducted by
ECS Home Visitors



90%

of children enrolled in ECS for
one year were assessed
age-appropriate in cognitive
and language skills



186

children and their parent/
families participated in Home
Instruction for Parents of
Preschool Youngsters (HIPPY)



448

home visits were
conducted by
HIPPY Home Visitors



68%

of children enrolled in HIPPY
for one year were assessed
age-appropriate in cognitive
and language skills



ELIANA'S JOURNEY

Brighton Center is always there for me. The **Every Child Succeeds** program helped me raise my kids into who they are today.

Before I had my first child, the hospital asked me if I would like to be reached out to by Every Child Succeeds for parenting support with my newborn. Right after my daughter was born, I was contacted by Brighton Center and met the incredible staff who provided personal support as I navigated my child's first days, weeks, and months.

I had no idea what to expect, but I was blown away. My daughter had difficulty sleeping, and the first eight months were challenging. My Home Visitor was there every step of the way. She came to my home every week and gave me new advice and techniques to try. She taught me different ways to stimulate and encourage child development in my daughter. She always had an answer to my questions, and if she didn't, she put me in contact with those who did. My kids are extremely smart and active because of what Brighton Center taught me.

My Home Visitor also made sure to consistently check up on me to make sure I was feeling good and everything was going well. With my first child, I didn't have much family to support me, but with her by my side, I never felt alone. She became family. She is always there for my kids and me. She invites us to events to keep us active in the community. When we see her out, my kids get really excited to see her and run right to her.

It means a lot to our family that our Home Visitor is bilingual, just like our family is. She talks to us the same way we speak to each other at home, which really helps my children be comfortable around her.

It's been five years since I was first introduced to Brighton Center. My second and third children have also gone through Every Child Succeeds. My Home Visitor continues to help my family. Brighton Center helps me with diapers for my kids through their partnership with Sweet Cheeks Diaper Bank.

Every year, we participate in Brighton Center's **Holiday Drive**, where we can choose gifts for the kids based on their interests, thanks to generous donors who provide them. This allows us to focus on staying within our family's budget.

When my family was interested in buying a home, our Home Visitor connected us to Brighton Center programs that would enable us to do so. Brighton Center's **Financial Education** and **Homeownership Education** programs help families like mine go through all the steps of buying a home, from budgeting to closing on it.

I always recommend Brighton Center and the Every Child Succeeds program to my friends and family. Through this program, you not only see your children's growth and learning increase but also your parenting skills improve in continuing to guide them as they get older. They develop skills and talents that you had no idea they had. Brighton Center has given my kids and me the tools to succeed.



WE ARE

ensuring quality **EARLY CHILDHOOD EDUCATION** is the foundation for life-long success and a **2-GEN APPROACH** that changes the trajectory for generations to come.



NORTHERN KENTUCKY SCHOLAR HOUSE

is part of a comprehensive statewide, two-generation self-sufficiency program that provides affordable housing, child development services, and case management support to single-parent families as they pursue a degree in higher education. Northern Kentucky Scholar House is a partnership between Brighton Center and Neighborhood Foundations. The 48 apartments and Early Scholars Child Development Center are located in the West Side of Newport, KY. Early Scholars Child Development Center's convenient on-site location eliminates many barriers parents often face in getting their children and themselves to school. Monthly workshops are offered based on topics suggested by residents, whose voices are also represented through a resident council, which fosters a sense of community among parents.

BRIGHT DAYS AND EARLY SCHOLARS CHILD DEVELOPMENT CENTERS

Bright Days, located in the historic East Side neighborhood of Newport, is a nationally accredited, 4 STAR rated quality child care center. Early Scholars Child Development Center, located in the West Side neighborhood of Newport on-site at Northern Kentucky Scholar House, is a nationally accredited, 3 STAR rated quality child development center. At both Bright Days and Early Scholars, children receive individualized classroom instruction to prepare them for success in school. Emphasis is on the quality of interactions among staff and children. The Centers utilize developmentally appropriate, research-based curriculum, high standards of health and safety practices, highly qualified staff, and provide an enriching learning and physical environment with nutritious meals, individualized classroom instruction, and parent involvement activities.

These unconditional supports and whole family expertise ensure that children are thriving and prepared to succeed in kindergarten while parents are engaged in post-secondary education or employment. Our programs deliver individualized, age-appropriate solid education in a safe and enriching environment so that parents can focus on their job or education.



85

children attended Bright Days
Child Development Center



41

children attended Early Scholars
Child Development Center



95%

of children who attended our
Child Development Centers for at
least 12 months met cognitive and
language skill expectations



68

parents were served
residentially at Northern
Kentucky Scholar House



34

parents made progress
toward achieving
self-sufficiency



52

parents made measurable
progress toward a degree or
training program



ALEA'S JOURNEY

I learned about **Northern Kentucky Scholar House** through a close friend who completed the program a few years prior. She shared with me her story and how much support she received, which inspired me to want to be a part of it. She knew I wanted to return to school, but I needed help like she did. Being a single mother trying to work and support myself and my children is very tough, to say the least. Having **Early Scholars Child Development Center** on-site felt like home because it was on the property, which brought me more security as a mother. Because of this, I was truly able to build relationships with the teachers and staff.

When I was first accepted into Northern Kentucky Scholar House, I was excited, and I felt a sense of relief in knowing this would be my moment. It was a moment for me to be able to position myself so I could provide a better life for my children. A moment to finally get ahead. A moment to be a part of something bigger than I had hoped for.

I was excited to embark on a new educational journey, but I would be lying if I said I wasn't afraid. I came from a low-income family, I was a foster child in the state of Kentucky, the first in my immediate family to graduate high school, and I was also low-income myself. All these thoughts ran through my mind, but I didn't allow them to hold me back. I remember when the Case Manager at Scholar House would always tell me, "You got this, don't think about it too much, just do it." I appreciated her efforts to keep pushing me through because what she didn't know in the beginning was that I didn't know if I would make it through.

I was accepted into the University of Cincinnati Behavioral Analysis Master's program. More than half of my program were women, but I couldn't count on one hand how many of us were African American and even a shorter few who were single mothers like me. I felt as if I stood out among my peers because they didn't have the same obstacles as me. Many were already married, in their careers, and had support to make graduate school easier. I realized that I had to work 10 times harder to not only make it through the program but also do well and come out on top.

I remember giving birth to my youngest, and while in labor, I was completing my midterm assignments. The doctors were concerned due to my high-risk pregnancy and wanted me to focus on labor. I remember returning home to Scholar House after my c-section with just me and my two boys needing help. I reached out to a few women here in our community. My neighbors brought groceries, helped with laundry, and even helped me with my oldest son.

I knew at that moment that this is what they meant by community at Scholar House. A community of parents who are also willing to jump in and help you when it's needed. A community of women who will sit and watch your children while you get a few homework assignments completed. A supportive staff who are always willing to help with resources and ways that will make us successful after completing the program. Scholar House is bigger than just providing housing, child care, and community resources. We became family. Scholar House has allowed me to complete clinical hours working at Cincinnati Children's Hospital Psychiatric Department, save money, and grow as a woman and mother; all while forming lasting, meaningful relationships.

If I learned anything while at Scholar House, it was the importance of community and being honest with yourself. I learned that community is bigger than just showing up to a workshop to get your required community service hours in, but really taking heed to what is being given. It's being honest with myself that it's okay to need help. Everyone comes from different walks of life, and that's okay. Learn to love your story. Don't be afraid to fail. Don't try to be perfect; only try to be better than you were yesterday.

I have met some of the best staff while at Brighton Center. Thank you for always believing in me, connecting me with resources, listening to me, and pushing me when I needed it. I am now a proud graduate of the University of Cincinnati with my Master's degree and working at Hamilton County Job and Family Services. Brighton Center and Northern Kentucky Scholar House, thank you for giving me and my children hope again.



WE ARE

supporting **YOUTH** as they transition to adulthood through positive youth development, skill building, and leadership that helps them succeed in school and life.



YOUTH STREET OUTREACH

provides street-based services to runaway, homeless, and street youth who have been subjected to or are at-risk of being subjected to abuse, sexual exploitation, and severe forms of trafficking. This includes outreach, prevention, individualized assessment, service linkages, case planning, and follow-up for youth.

HOMeward BOUND SHELTER

is the only 24-hour direct access emergency shelter for youth under the age of 18 in Northern Kentucky. Located in Covington, KY, Homeward Bound Shelter provides a safe environment and residential treatment services for runaway, homeless, abused, neglected, and dependent youth ages 11-17.

INDEPENDENT LIVING

provides comprehensive transitional living services to assist older youth in the state's foster care system in making a successful transition to self-sufficiency by providing housing along with comprehensive integrated services for youth.

YOUTH LEADERSHIP DEVELOPMENT (YLD)

is an after-school program for middle school youth ages 11-15 that builds leadership skills and conducts community service projects. For high school youth, Teen Coalition is geared toward youth who enter high school and is offered in Newport. Teen Coalition combines service learning, community engagement, and career and college exploration for youth in high school.

SAFE PLACE

is an outreach program run by Homeward Bound Shelter. There are 145 sites within the community with trained volunteers. Youth accessing these locations are connected immediately to safe and supportive services.

OPPORTUNITY HOUSE

is an innovative program that provides a supportive environment for young adults to reach their education and career goals. Through access to post-secondary education opportunities, stable housing, and wraparound services, young adults 18-24 are empowered to achieve educational success, employment, and self-sufficiency.



Youth programs adhere to a positive youth development philosophy, recognizing when young people have access to an array of supports and opportunities, they achieve a healthy sense of identity and full range of competencies necessary to succeed as adults. We celebrate the inherent values of youth and seek to draw on their strengths and build on their competencies.



145

safe place locations in NKY for youth in need



113

youth received crisis intervention services



44

youth received emergency care at Homeward Bound Shelter



50

runaway and homeless youth received intensive case management



182

youth participated in Youth Leadership Development (YLD)



78%

of youth in YLD demonstrated social and emotional skills necessary for success



KYLIE'S JOURNEY

From sharing a bedroom to having my own living space, Brighton Center's **Opportunity House** has let me truly bring out who I am. This program has opened up so many doors that I could never have dreamed. In just a year, I have learned so many skills for my future education and career. Opportunity House has shown me who I want to be.

Brighton Center has become my second family. Having lost both my parents and my uncle within a year, Brighton Center became my backbone and support. They comforted and helped me during one of my darkest times. I always look forward to spending time and participating in workshops and events with my Brighton Center community.

Before I came here, I wanted to go into Pre-Med because those around me pressured me into it for financial reasons. Opportunity House has given me the chance to pursue what I really want, elementary education, rather than letting money dictate what I do with my life. My Case Manager, **Financial Coach**, and other staff have taught me the skills needed to manage my time, finances, social life, and mental health in order to really go after my dreams.

Every month, I meet with my Case Manager where, we discuss my grades and classes. She helps me stay on top of everything. Plus, she has many connections at my school, so whenever I need any help, she's able to provide me with the resources, such as tutoring, advising, and free grocery services, in order to be successful. We also have workshops weekly. This can be anything from a cooking class to yoga to even Narcan training. These classes are extremely fun and informative. My Financial Coach helps keep my finances in good shape. We discuss

college, employment, credit, spending, budgeting, and whatever financial obstacles I need to overcome. She helped me lay out my spending and savings along with educating me on what I need financially to accomplish my goals.

Brighton Center has allowed me to dream. I dream of having my own apartment and traveling across the world. The people here have listened to my dreams and shown me the path to achieve them. They have given me the opportunity to be independent, all while still always supporting my path there.

Opportunity House is just the right mix. It is truly a community. It's small enough that I know everyone and that we are close, but I also have my own kitchenette, bathroom, and living space. Having had to share a room all my life, this is an unbelievable experience.

Before I looked into this program, I was interested in dorms and apartments. Dorms do not have the same closeness that Opportunity House provides, and the market for apartments right now is way too high for many college students like myself. Brighton Center has given me an amazing and balanced in-between that gives me everything that I am looking for. I loved Opportunity House so much that I was ready to move in the day I found out I was approved!

I am so proud of myself and how far I have come. I have had my fair share of challenges, but I have never given up. Brighton Center, and Opportunity House, do not let my troubles define who I am or will be. Instead, they help me create the image of who I want to be and truly am.



WE ARE

providing **BASIC NEEDS** and long-term **HOLISTIC SUPPORT** that helps individuals maintain stability and have the best quality of life possible.



FAMILY SUPPORT - EMERGENCY ASSISTANCE

is a crisis intervention program intended to help individuals and families with emergency needs. Families receive referrals and linkages to appropriate corresponding resources that enable them to stabilize through case management and supportive wraparound services.

NEIGHBORHOOD COMMUNITY GARDEN

has 96 raised beds, allowing residents to increase knowledge of ways to grow food and cook nutritious meals.

THRIFTING ON EASTERN

is a community thrift store offering high-quality, gently used household items and clothing at affordable prices. Proceeds benefit Family Support programs.

SENIOR SUPPORT

provides support to older adults at Brighton Properties' Saratoga Place, Two Rivers, and Austinburg Apartments to connect them with services that will allow them to age in place.

HOLIDAY DRIVE

is made possible through generous donations from local families, churches, and businesses, so that Brighton Center is able to provide holiday items for customers. Families engaged in Brighton Center programs can participate in Wish Tree to choose gifts for their children. The Used Toy Sale is a long standing Brighton Center tradition, where children ages 2-12 shop for their siblings, friends, or other young family members with the help of an adult volunteer.

Families are empowered, from crisis to stability, to achieve their goals through programs designed to work in partnership with them to identify and achieve their hopes and dreams related to economic self-sufficiency and other family and community matters that are important to them.



2,491

families accessed emergency assistance services



6,146

individuals received food, diapers, personal care items, or other basic necessities



275

families received financial assistance to ensure housing stability and avoid eviction



127

individuals were assisted with clothing needs



236

senior residents increased their social supports and received services to allow them to age in place



2,437

individuals received holiday assistance including holiday food and gifts for kids



JACK'S JOURNEY

Brighton Center is home. [Saratoga Place Apartments](#) has become my second family. They are always there for me, and I am there for them.

All my life, I have gravitated toward helping with the needs of others. I love to make others happy and healthy. But, when I needed help, Brighton Center became my saving grace. My wife and I were homeless when I learned about Brighton Center. As soon as I walked into Saratoga Place Apartments, I knew I was home.

Every day, I am touched by the generosity here. Brighton Center helped me get dentures and a bed, two things my wife and I had been struggling with. We have also utilized [Senior Support](#) to access [Senior Commodities](#) and the [Choice Food Pantry](#) to help stretch our fixed income further.

Being here pushes me to challenge my fears and become a stronger, better version of myself. I am surrounded by Brighton Center employees who have so much love and compassion for the seniors here.

My dad used to run Panorama Apartments back in the 70s, and I started visiting there often when I was 10. I spent a lot of time around the seniors there and learned about their unique needs. That was probably one of the best experiences I ever had in my life because it taught me so much. As I went through my life, I always gravitated toward looking for ways to help others with their needs.

Being at Saratoga Place Apartments allows me to continue to fulfill my life's purpose: to help others. When I first moved here, one of the residents gravitated towards me. We spent hours together talking about our lives before he passed away. While the situation was challenging, I believe we really impacted each other.

Brighton Center really runs this place like a family and it's so unique. I haven't ever seen anything like it. It's really easy to plug in, and I think many people want to give back in meaningful ways.

One of the biggest obstacles I have overcome is that I was not comfortable being out with people, so living here I have been more involved and less isolated.

I started a peer group called Beat the Blues, where we share how we are doing every week. This gives us an opportunity to talk about what's happening in our lives in a safe and trusted environment. I want to do everything I can to help here. As an [AmeriCorps Seniors](#) volunteer, I am a Floor Captain, helping residents to increase their sense of well-being and help them feel safer and less isolated.

I don't look at Saratoga as an apartment. This is a home, and the residents here are brothers and sisters. If you take the time to come in and visit, I do not doubt that you would choose this place.



WE ARE

helping families gain **HOUSING** that is affordable, achieve **ECONOMIC STABILITY**, and **BUILD ASSETS** for the future, which makes our community thrive.

STABLE FAMILIES

is an 18-24 month intensive program that serves families with children in grades K-3 who are at imminent risk of homelessness to stabilize their housing situation. The goal is for parents to maintain housing while children maintain school stability.

RAPID REHOUSING

is a 12 month program that works with individuals experiencing homelessness by connecting them with quality, affordable housing and wraparound support services including case management.

BUILDING COMMUNITY WELL-BEING

is a project that works with key partners to develop a comprehensive community, child, and family well-being system. At the systems level, parents and youth are engaged as partners to understand their journey better, define well-being, enhance communication efforts (including technology), and provide robust training for both the community and system partners. Families also receive concrete resources and direct services from the primary prevention system to meet their needs.

FINANCIAL EDUCATION & COACHING

occurs through free workshops covering budgeting, banking, how credit works, credit reviews, and preparing for major purchases. During one-on-one coaching sessions, individuals develop a personal budget, learn money management techniques, run a credit evaluation, and receive help to establish checking or savings accounts.

HOMEOWNERSHIP EDUCATION & COACHING

workshops cover each step of the home buying process from budgeting to closing. One-on-one sessions help home buyers develop an action plan outlining the steps necessary to reach their goal of homeownership. Follow-up counseling is also provided.

FORECLOSURE PREVENTION

assistance is provided to support homeowners in navigating the foreclosure process by intervening with lenders and attorneys, and applying for any available assistance to mitigate housing disruptions.

ASSET BUILDING TOOLS

are available to individuals interested in building credit through partnerships with local financial institutions.

VOLUNTEER INCOME TAX ASSISTANCE (VITA)

is a free tax assistance program offered every Saturday from the end of January to the middle of April. Individuals can have their taxes completed for free and filed electronically by IRS-certified volunteers.



We empower families through education, advocacy, and partnership by creating opportunities to obtain and maintain housing and financial stability while also building resiliency. We work with regional safety-net partners, state programs, housing organizations, and financial institutions to provide optimal services to the community.



248

families participated in case management services to work toward a plan for achieving self-sufficiency



194

individuals participated in financial education workshops



53

parents and youth participated in Building Community Well-Being's advisory boards



\$649,065

in total combined tax refunds for 587 individuals were processed through free tax preparation services



80

individuals participated in homeownership education workshops or individual coaching



48

individuals became a homeowner



WHITNEY'S JOURNEY

In just one year, I went from being abruptly told I needed to relocate due to my apartment complex being sold to owning my own home, all thanks to the support of Brighton Center. The **Financial Wellness** services Brighton Center offers taught me everything I needed in order to become financially stable. Brighton Center has allowed me to begin my life again.

Owning my own home has always been a dream. It was constantly in the back of my mind, but I never thought I could do it. After someone mentioned Brighton Center and the available programs, I thought my dream might actually be feasible. Brighton Center broke everything down piece by piece and worked through every step of the journey with me. I attended the **Homebuyer's Workshop** in May of 2022 and immediately enrolled in the **Individual Development Account (IDA)** program to begin building assets for a down payment on a home.

For seven years, I lived at the same apartment complex. I was a great tenant, paid my rent, and was even upgraded from a 2-bedroom to a 3-bedroom unit. In July of 2022, four months into my homeownership journey with Brighton Center, the property owner sent out notices to all tenants. They gave us very little time and did not help families find secure housing. I had hit rock bottom.

My daughter and I had to leave much of our belongings behind and slept on the couches of my family for about a year. It was heartbreaking watching my daughter struggle with her mental health during this period.

Brighton Center provided me with a Case Manager, financial workshops, networking opportunities, and everything I needed to own my own home and recover. My Case Manager is one of the most amazing people

I ever met. She supported my financial and personal journey. She helped me pay off a large debt that I didn't even know I had. She showed me how to open a savings and checking account. She even introduced me to many people and helped build my connections in the community. She was with me through the entire process and taught me about all of the different parts of homeownership that I had no clue even existed. At the same time, she always treated me as human, regardless of my struggles. Whenever I was feeling upset, she was there to cheer me up and help me stay focused. My Case Manager was always so understanding and caring. Having that support helped keep me going during one of the darkest and hardest periods of my life.

The people at Brighton Center never gave up on me. They continued giving me the knowledge I needed to keep my dream alive, even when I was struggling. They taught me that I was stronger than I ever thought I was.

Despite the housing challenges I was facing, I received two promotions at work and met my savings goal for the IDA program by March of 2023. I even continued contributing to the account to ensure I had an emergency fund after purchasing a home.

In April, I received pre-approval for a mortgage and was able to finally start looking for a home of my own. It was a tough market, but I eventually found a home for my daughter and me in Covington.

I closed on my new home in the summer of 2023. I watched my daughter cry tears of joy when I told her. We finally have our own place that will grow with us. My Case Manager even helped me find affordable furniture for my new home! I don't know where I would be without Brighton Center's Homeownership Program.



WE ARE

offering **PRE-APPRENTICESHIP** experiences, **JOB TRAINING** in high-demand career sectors, and opportunities for **CAREER ADVANCEMENT** that changes lives.



CENTER FOR EMPLOYMENT TRAINING (CET)

offers adults life-changing skills that help them find good jobs with a livable wage and build a successful future. Instruction is hands-on, practical, and personal, designed to get people working as quickly as possible and begin their path to a promising future. CET is accredited by the Council on Occupational Education and provides competency-based skill-specific training in Medical Assisting, Health Technology Administration, and Human Resources and Payroll Specialist. CET's skill divisions prepare trainees for occupations that are in demand in the local labor market. The training has been designed in close cooperation with local employers to ensure that CET graduates will be in demand in the workforce. A trainee moves through the curriculum at his or her own pace, moving on to a new concept when ready. Over sixty percent of training is hands-on, using equipment similar to that used in the workplace.

TRADES TO SUCCESS

is a 3 week Pre-Apprenticeship program for individuals with a focused interest in creating a pathway to a career they'll love. In the 3 weeks, trainee's will explore in-demand trade and apprenticeship careers in Greater Cincinnati/NKY [such as Construction & Trade, Logistics & Transportation, and Advanced Manufacturing]. Participants will earn the Lean 6 Sigma Yellow Belt Certification, and Kentucky Essential Skills Certification. They are also provided a weekly stipend while involved in the 3 week program for added support. Trades to Success has a high focus on connecting individuals to Trade programs and apprenticeships, while providing added support to their journey.

Workforce Development provides quality employment and training services that offer the skills and resources for individuals to secure and retain employment that offers a livable wage, benefits, and opportunities for advancement.



140

Individuals received career training through Center for Employment Training [CET]



\$12,413

average wage gain for those who complete CET and secure employment



88%

of CET graduates maintained employment for 12 months



49

individuals completed Trades to Success



32

individuals obtained employment in a Trade



11

individuals started an apprenticeship or post-secondary program

#1 Children's Hospital in the Nation

BEST



NATASHA'S JOURNEY

I am no longer a single high school mother statistic. Brighton Center showed me that I was much stronger and more deserving than I ever knew I was. They helped me build the path toward the career, family, and life that I wanted.

I was a single mother, working a minimum wage job and trying to balance school at the same time when I discovered Brighton Center's **Center for Employment Training (CET)**. Right from the get-go, the debt-free program I took part in focused on enabling people to start their careers strong. At Brighton Center, I could relate to the individuals around me. We came from the same types of situations. We were all there trying to change our lives for the better.

My Instructors were not just there to teach and leave. They cared about every single one of us like family. They showed up to teach and, in the process, built bonds with each of us. Brighton Center truly allowed me to focus on my studies and my children. They paved the way for my life as a Medical Assistant.

Attending CET prepared me for my career because of how hands-on the learning was. We practiced what we learned through mock office and clinicals. From blood draws, ear irrigations, mock interviews, and writing resumes, the program covered it all. Instructors would teach a lesson the first half of the day and then the second half we would physically practice it. Being able to be hands-on was hands-down the best part of CET and made me feel extremely comfortable walking into the hospital.

My life has changed tremendously since graduating from CET in 2011. I have worked at Cincinnati Children's Hospital, the #1 Children's Hospital in the nation, for the past 12 years. I have received the Imagination and Courage Award from the Rubinstein Foundation in the Developmental and Behavioral Pediatrics Center. I am a Registered Medical Assistant and obtained my Medical Assisting II Advancement Credential. Brighton Center taught me the skills and showed me the path toward success.

Brighton Center has also helped me balance my life. Before attending the program, I was struggling, but Brighton Center allowed me to prioritize my family, all while still advancing my career.

I am proud of the mother and provider I am to my sons and the life I have created for us. I currently own my own home and car, and I am putting my oldest son through college. Seeing my sons' smiles every day always puts a smile on my face.

At Cincinnati Children's Hospital Medical Center, I work in the Division of Developmental and Behavioral Pediatrics as a Registered Medical Assistant II.

Brighton Center completely changed my life. If you are at a standstill in life and looking to better your future long-term, Brighton Center can help get you on that track. Their help allowed me to find a career I love and thrive in and provide for my family.



WE ARE

making **RECOVERY** possible for those struggling with addiction through a holistic long-term approach and peer-driven model.



BRIGHTON RECOVERY CENTER FOR WOMEN (BRC)

is a 100 bed facility located in Boone County that utilizes Recovery Dynamics curriculum and is a peer-driven model of recovery. The program helps women recover from chronic substance use disorder and addiction, and move toward a life of sobriety and productivity. The focus is to help the women change their behavior, skills, and attitudes. BRC takes a long-term, holistic approach to recovery that is comprised of four distinct modules of progression, and is ultimately connected to an array of Brighton Center services. On average, women spend 9-12 months immersed in a supportive environment that holistically allows them to recover from the effects of addiction and rebuild their lives.

SOBER LIVING

provides safe, affordable housing to Brighton Recovery Center and Recovery Kentucky graduates that promotes permanent sobriety upon reintegration back into the community. The Sober Living program believes housing and employment significantly increase an individual's opportunity to stay clean and sober.

CENTER TABLE, CATERING WITH A PURPOSE

is a catering social enterprise that uses fresh, seasonal ingredients to create delicious food for all occasions from backyard barbecues to business lunches and elegant celebrations, with profits from CENTER TABLE supporting women in recovery. At Brighton Recovery Center, residents learn culinary, catering, and customer service skills that will ultimately lead to career opportunities in the hospitality industry. When you choose CENTER TABLE, you are supporting women in recovery.

Women are encouraged to have safe, healthy, and positive attitudes that value sobriety and ongoing recovery, leading to successful lives.



242

women served residentially through Brighton Recovery Center for Women



15

residents became Peer Mentors to other women at Brighton Recovery Center



37

women completed all phases of the 9-12 month Recovery Center program



52

women completed a job readiness program and learned workplace skills



138

women volunteered their time to give back to the community



Significant increases in

quality of life, employment, ability to meet basic needs, recovery supports, and improved mental health



TERRIE'S JOURNEY

My life now is beautiful beyond measure. Brighton Center showed me the path there. If it wasn't for Brighton Center, there is no doubt in my mind I would not be alive today.

Addiction ruined my life. I was born into a long line of substance abuse. My mother left when I was two due to addiction, and my father was never around because he was an alcoholic. My grandmother raised me and we had limited resources.

For six years, I was addicted to prescription opiates and meth. I lost custody of my daughter, I was unable to work, I was 97 pounds, I had multiple shoplifting charges, and I couldn't get out of bed without using some kind of drug to make me feel better.

The Department of Corrections sent me to **Brighton Recovery Center for Women (BRC)** after a failed drug test on probation, and I am so glad they did. BRC shaped me into the sober person I am today.

BRC gave me everything. They taught me how to be accountable for myself and others, how to be responsible, and how to forgive myself for the harm I inflicted on everyone and everything that I loved. They taught me the skills and knowledge for beyond recovery.

Brighton Center gave me my first job when all other places rejected me for being a felon, and allowed me to climb the career ladder.

Now, I am a full-time employee, wife, mother, and part-time student. I have an amazing job where they just keep promoting me. I won the 2023 NKY Outstanding Woman of the Year through the Northern Kentucky Chamber of Commerce. I have managed to average A's and make Dean's List every semester. I want to continue my education and get a Master's in addiction counseling so I can be of maximum service to those struggling with substance abuse like I was.

I had nothing when I arrived at Brighton Center. All of my relationships had been damaged. Brighton Center helped me work my way up from the very bottom. They were and continue to always be there for me. When I lost my grandmother, the women at BCR held me in their arms while my whole world fell apart. They showed me love regardless of who I was. They showed me compassion unlike anything I have ever experienced.

The past ten and half years of sobriety have been nothing but a dream. Sobriety is not easy, but it is so worth it. Brighton Center helped me create this amazing life. They are the voice for the people that cannot use theirs. BRC did not judge me based on who I was. They did not let my past define my future.



WE ARE

connecting **JOB SEEKERS** to high-quality jobs and **EMPLOYERS** to talented candidates, creating a strong regional workforce.



KENTUCKY CAREER CENTER OPERATOR

coordinates the delivery of services between partners at Kentucky Career Center locations in Covington, CVG Airport, Florence, Carrollton, and Williamstown. Kentucky Career Center fosters a culture of collaboration and excellent customer service among Career Center partners that promotes the delivery of innovative, high quality workforce development services.

BUSINESS SERVICES

assists employers with unique and individual workforce needs. From employee retention support and training programs to talent recruitment and other workforce services, Business Services focuses on connecting qualified employees with employers.

TALENT DEVELOPMENT SERVICES

prepare job seekers for the demands of the workforce. Individuals have access to career coaching and workshops covering resume writing, job searching, and networking skills. Job seekers are also connected to job training opportunities through local Workforce Innovation and Opportunity Act funding.

YOUTH TALENT DEVELOPMENT SERVICES

prepares youth (ages 16-24) for the demands of the workforce. Individuals receive career coaching, access to workshops, internship opportunities, and funding for job training programs through local Workforce Innovation and Opportunity Act funding. Career coaching covers the technical aspects of job searching and interviewing skills, mock interviews, on-the-job training, perception in the workplace, and applied writing and verbal skills.

LIFT UP

is a collaborative regional project with St. Elizabeth Healthcare which boasts a No Wrong Door Model that is designed to funnel those receiving treatment into employment opportunities.

Kentucky Career Center provides quality employment and training services that offer skills and resources for individuals to secure and retain employment with a livable wage, benefits, and opportunities for advancement.



2,215

individuals attended orientations or workshops to learn about career opportunities



483

job seekers obtained employment



1,222

unique employers were engaged by staff at the Kentucky Career Center



228

youth attended an orientation or workshop where they learned workplace life skills



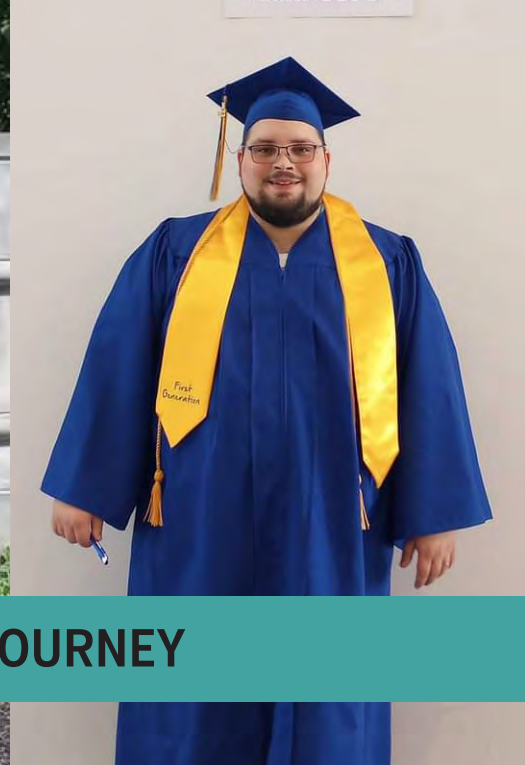
509

hiring events held through the Kentucky Career Center



177

individuals received services through Lift Up



NATHAN'S JOURNEY

Brighton Center has changed my life substantially. I'm blessed and thankful for the path that led me to them and, ultimately, a brighter future.

In October 2020, I had been looking for employment when I heard about an opportunity with Brighton Center through the [Kentucky Career Center](#). I had many jobs over the years but was eager to find a career I could eventually retire from and was hopeful Brighton Center's staff at the Kentucky Career Center would help me find that path.

I accessed the Kentucky Career Center in Carrollton, KY and attended a one-on-one orientation with [Talent Development Services](#) where I learned about the opportunity to go back to school through the Workforce Innovation and Opportunity Act (WIOA). After going through the eligibility process and working with the staff at the Kentucky Career Center to submit all the necessary paperwork, I was able to enroll in Jefferson Community and Technical College's Electrical Engineering program.

Through this experience, I have learned that I am more capable than I ever thought I was, and the support Brighton Center provided made me not only believe it, but also achieve my goals. Through my Career Coach, I learned important skills around time management, prioritizing tasks, and keeping deadlines. My Career Coach and all of the staff at Brighton Center were always there to answer any questions I had and provided support when I needed help.

In May 2023, I graduated from the Electrical Engineering program with Honors and was able to obtain a degree I otherwise would not have had the opportunity or support to achieve.

After graduation, I gained employment at North American Stainless, where I continue to work as an Electrical Technician. I now have a career with opportunities where I can provide for my family, and we have enough income that my household can comfortably live. We were also able to purchase a new car. My future looks bright, and I hope to have a long and healthy career.

KENTUCKY CAREER CENTER LOCATIONS



Kentucky Career Center, Covington
1324 Madison Avenue, Covington, KY 41011, [859] 292-6666

Kentucky Career Center, Carrollton
1209 Highland Avenue, Suite S, Carrollton, KY, [502] 662-0319

Kentucky Career Center, CVG Career Center
3087 Terminal Drive, Hebron, KY 41048, [859] 767-6952

Kentucky Career Center, Florence
8020 Veterans Memorial Drive, Florence KY, 41042 [859] 372-8400

Kentucky Career Center, Williamstown
1350 N. Main St Williamstown, KY 41097, [859] 428-7519

Kenton County Public Library, Erlanger Branch
401 Kenton Lands Road, Erlanger KY, 41018, [859] 962-4002

Owen County Public Library
1370 Hwy 22 East, Owenton, KY 40359, [502] 484-3450

Pendleton County Public Library
801 Robbins Ave, Falmouth, KY 41040, [859] 654-8535

WE ARE

celebrating dedicated **VOLUNTEERS** who play a critical role throughout our organization.



Volunteers support our mission and increase our ability to help families achieve their hopes and dreams. By working together with staff throughout the organization, volunteers of all ages and group sizes assist with daily operations, working with customers, and providing additional support utilizing specialized skills. Every hour a volunteer spends at Brighton Center equates to a \$24.14 donation, which is incredible. Every victory the families we serve accomplish is aided by our volunteers' compassion and commitment.

VOLUNTEERS PROVIDE

- critical supports to families experiencing food insecurity.
- experiences to youth to build leadership and reach their full potential.
- necessary supports in our Early Childhood Education programs to help children reach developmental milestones.
- free tax preparation that puts refunds back into the hands of hardworking families.
- assistance with resumes and conducting mock interviews to individuals seeking employment.
- vital supports to women on their path to recovery.
- administrative support, serving on event committees, and advisory boards.



JUNIOR BOARD GIVES BACK IN UNIQUE WAYS

Brighton Center's Junior Board, a group of civic-minded young professionals in the region, seeks to improve their communities while making personal and career connections. Through fundraising and volunteer events, these young professionals are empowered to lead and grow professionally while mentorship from members of Brighton Center's Board of Directors provide key development opportunities. This amazing group of leaders has provided critical support to Brighton Center through innovative and unique fundraising events including FriendsGiving, their signature event, along with a variety of give back nights at local businesses. The Junior Board also volunteers their time across various programs within the agency and through the collection of wish list items such as food and holiday toys. For more information about the Junior Board, email volunteer@brightoncenter.com.





AmeriCorps Seniors - Retired and Senior Volunteer Program (RSVP) enriches the lives of individuals, age 55 and over, through meaningful volunteer opportunities that utilize their time and talents to address critical community needs in Northern Kentucky. This is a national volunteer program funded by the Corporation for National and Community Service. Brighton Center coordinates the volunteers throughout Campbell, Boone, and Kenton County. Volunteers choose how, where, and how often they want to serve, with commitments ranging from a few hours to 40 hours per week.



The Senior Medicare Patrol (SMP) program empowers seniors through increased awareness and understanding of Medicare programs by providing free unbiased and up-to-date health insurance information, counseling, and assistance to Medicare beneficiaries of all ages and their caregivers through trained volunteers. The activities of the SMP program enhance the financial, emotional, physical, and mental well-being of older adults - thereby increasing their capacity to maintain security and independence in retirement, and to make better financial and healthcare choices.



1,742

volunteers provided additional capacity to programs, staff, and customers



18,714

volunteer hours which equals the time of **7** full-time staff members



79

volunteer groups gave their time across the agency



261

AmeriCorps Seniors gave a total of **28,122** hours at **22** volunteer stations across Northern Kentucky

WE ARE BRIGHTON CENTER'S LEADERSHIP TEAM



Wonda Winkler
President & CEO



June Miller
Chief Financial & Administrative Officer



Melissa Hall Sommer
Senior Vice President



Ellen Bates
Vice President



Lauren Copeland
Senior Director



Lauren Allhands
Kentucky Career Center Operations Director



Douglas Beard
Workforce Innovation Director



Mary Decker
Human Resources Director



Dellisa Ford-Edwards
Family & Child Development Director



Jonika Greene
Workforce Development Director



Tony Herms
Director of Facilities & Property Management



Cassie Hitch
Evaluation & Data Administrator



Janie Hamilton
Recovery Services Director



Kate Kassiss
Youth Services Director



Eric Owsley
Community Resource Center Director



Anita Prater
Recovery Services Director



Jessica Schierling
Parenting Services Director



Stephanie Stiene
Housing Development Director



Jenny Wiley
Housing & Family Well-Being Director

TAMMY WEIDINGER SUPERNOVA AWARD

The Tammy Weidinger Super Nova Award recognizes an employee who has risen through the ranks by seeking additional responsibility, excellence in job performance, and strong commitment to the mission and core values.

WE ARE

a dedicated, talented and mission-driven team that works to partner with individuals, each other, and the community to help families across the region achieve their hopes and dreams.

LEADERSHIP & ENGAGEMENT

All Brighton Center staff are collaborative leaders who have a passion for the work. Our leaders model the way and inspire a vision that empowers others to act. We have courage to innovate, ultimately improving the quality of life for our customers and the community. Engagement at Brighton Center means being wholeheartedly committed and invested to our mission and core values as staff use their voice and skills to grow as leaders and strengthen our community impact.

TENURE MILESTONES

One of Brighton Center's many unique aspects is our staffs' long tenure. Our focus on staff development, a collaborative culture, and fostering innovation results in staff who care deeply about our mission and those we serve, which often results in many years of service.



Jamie Coyle
Youth Services Coordinator



Mary Decker
Human Resources Director



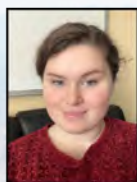
Tony Herms
Director of Facilities & Property
Management

EMPLOYEES OF THE YEAR

For those who have shown exemplary performance in their career over a significant period of time as chosen by the President & CEO and Executive Leadership Team.

DIRECTOR AWARD

For those who have shown exemplary performance within their department as chosen by the Director.



Karli Adams



Dontanya Coffey



Angela Anderson



KariAnn Curry



Mattricia Fagin



Isaac Frederickson



Becca Freyhof



Cassie Hitch



Emilee Hunt



Tasha Johnson



Tammy Liles



Hayley New



Gina Pingleton



Windy Pollitt



Jared Reinecke



Jessica Warner

BOILED FROG AWARD

For those who rise to the occasion and have shown the unique ability to overcome extreme obstacles in the performance of their job as chosen by their peers.



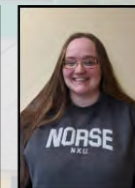
Shelia Forman



Isaac Frederickson



Tammy Liles



Jennifer Sims



Kat Sullivan



Yovani Velasquez



Julie Waldroop



Kimberly Mullins-Ward



Jessica Warner



Anita Prater



Dellisa Ford-Edwards



Gina Pingleton



Darlene Motley



Maria Tenjo



Donna Jebens



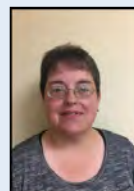
Donald Quinn



Jennifer Wiley



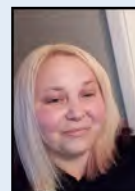
Darene Bradford



Sue Forbes



Golden Neri



Amber Phillips

BRIGHTON CENTER BOARD OF DIRECTORS



Dan Groneck
Retired, U.S. Bank
Board Chair



Eric Johnson
Grant Thornton
Vice Chair



Jake Bartel,
Birchcreek Wealth
Management
Treasurer



Alicia Townsend
U.S. Bank
Secretary



Damon Allen
Federal Home Loan Bank
of Cincinnati



Christy Alwell
Pivot Realty Group



Jennifer Barnes
Al Meyer



Kenneth L. Blackburn
The Procter & Gamble
Company



Bonita Brown
Northern Kentucky
University



Anne Busse
Thomas More University



Lisa Yeardon Casson
CommonSpirit Health



Shannon O'Connell Egan
Dinsmore & Shohl



Mark Exterkamp
First National Bank



David R. Fleischer
Alpha+Beta Strategies



Jeremy A. Hayden
Taft Law



Julia Johnson
Retired, City of Cincinnati
Metropolitan Sewer District



Dave Koeninger
Retired, Millenium
Physician Group



Mike Lakin
HUB | HORAN



Christopher Owens
Taylor Oswald



Leyla Pena
Cincinnati Public Schools



Laura Pleiman
Boone County
Fiscal Court



Annamarie Reilly
MCM, CPAs & Advisors



Sophia Roberts
LifeCenter



Joe Schamer
SECO Electric



Marianne Schmidt
Retired, PNC Bank



Maida Session
Duke Energy



Madison Smith
Fifth Third Bank



Tom Stoll
Union Savings Bank



Justin Vanderklas
Clark Schaefer Hackett



Jamie Wagner
Truist



Wanda Walker-Smith
Hamilton County Small
Business Development Centers



Katie Walters
iHeartMedia



Ingrid Washington
Gateway Community
& Technical College



Jason Wessel
Encompass Health Cincinnati



Caroline K. Weltzer
Viox & Viox, Inc.

BRIGHTON PROPERTIES BOARD OF DIRECTORS



Caroline K. Weltzer
Viox & Viox, Inc.
Board Chair



Brian Crecco
Capital Construction
Services
Vice Chair



Julie Schoepf
Dinsmore & Shohl
Treasurer



Ken Muth
Duke Energy
Secretary



Robert Arnold
Thomas More University



Aaron Anderson
GBBN Architects, Inc.



Stephanie Bogenschutz
St. Elizabeth Healthcare



Anthony Bradford
A.M. Titan Properties



Kristie Dierig
Ever Spark, LLC



Dawn Grace
Federal Home Loan
Bank of Cincinnati



Susan McDonald
Retired, St. Elizabeth
Healthcare



Cheri Padgett
Fifth Third Bank

STATEMENT OF ACTIVITIES AND CHANGES IN NET ASSETS FOR FISCAL YEAR ENDED JUNE 30, 2023

Brighton Center's solid financial foundation is built upon our high ethical standards of not only delivering services that are equitable and impactful, but also managing our finances with transparency and the highest level of accountability to our community, funders, and Board of Directors. Our strong commitment ensures that we can continue to provide essential services to fulfill our mission.

CONTRIBUTIONS, SUPPORT, AND REVENUE

United Way Allocation	\$1,272,763
Contributions	\$1,891,149
Donated Goods	\$863,028
Special Events, Net of Related Expenses	\$111,246
Fees and Grants from Governmental Agencies	\$7,256,037
Fees and Grants by Unassociated Organizations	\$1,248,660
Program Service Fees	\$292,622
Revenues by Associated Organizations	\$152,833
Sales of Supplies and Services	\$58,954
Other Income	\$37,435
Investment Income	\$367,972

Total Contributions, Support, and Revenue **\$13,552,699**

EXPENSES - PROGRAM SERVICES

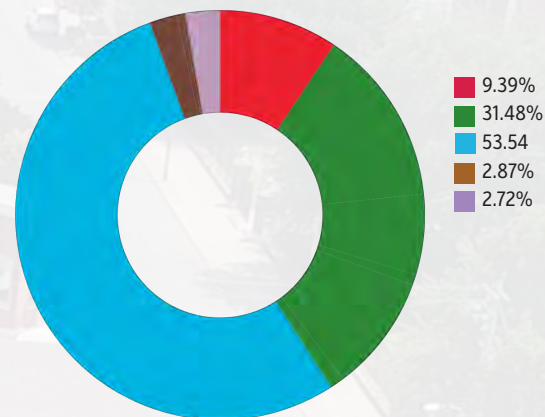
Recovery Services	\$1,011,856
Family and Child Development	\$1,291,286
Youth Services	\$1,159,684
Community Resource Center	\$1,947,926
Workforce Development	\$1,218,391
Housing and Family Well-Being	\$1,434,179
Kentucky Career Center	\$1,314,031
Parenting Services	\$1,122,666

EXPENSES - SUPPORTING SERVICES

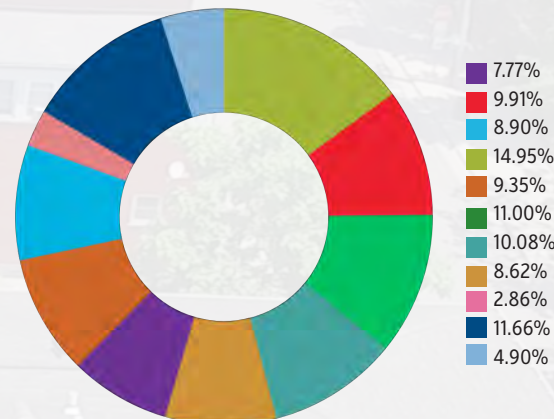
Fundraising and Public Relations	\$373,079
Indirect Costs - Management and Other	\$1,519,108
Other	\$638,578
Total Expenses	\$13,030,784

Change in Net Assets	\$521,915
Net Assets, Beginning of Year	\$9,590,044
Net Assets, End of Year	\$10,111,959

BRIGHTON CENTER REVENUE | \$13,552,699



BRIGHTON CENTER EXPENSES | \$13,030,784



*Our financial statements audited by Barnes, Dennig & Co., Ltd. meet the auditing standards generally accepted in the United States of America and the standards applicable to financial audits contained in government auditing standards issued by the Comptroller General of the United States.

ACCOUNTABILITY & ACCREDITATION

- Brighton Center is an accredited charity through the Better Business Bureau and meets all standards for charitable accountability, including governance and oversight, measuring effectiveness, finances, and fundraising.
- Our **Bright Days Child Development Center** is 4 STAR rated and accredited by the Association for Early Learning Leaders.
- **Early Scholars Child Development Center** is 3 STAR rated and accredited by the Association for Early Learning Leaders.
- Brighton Center's **Center for Employment Training** is accredited by the Council on Occupational Education and is approved to receive Title IV funding from the Department of Education.
- Our **Homeward Bound Shelter** and **Independent Living Programs** are CARF accredited, demonstrating that we are guided by internationally recognized service standards and best practices.
- We are monitored by external funding sources. Our **Homeward Bound Shelter**, which serves homeless and runaway youth, and our **Bright Days Child Development Center** and **Early Scholars Child Development Center** must be compliant with the requirements of licensing.

IN HONOR AND MEMORY DONATIONS (July 1, 2021 - June 30, 2022)

IN HONOR OF

Bob & Helen Brewster

Pamela Brewster Collar & William Collar

Michael & Deborah Dutle

Meredith Henkenberns

Smith & Williams Families

Darin Smith

G. Keith Gambrel

Theresa Mohan

Cathy & Dick Harvey

Christine & Flo Buendia

Don & Ruth Harvey

Catherine & Richard Harvey

Nancy Headland

Alan & Barbara Korn

Linda Heath & Cliff Shisler

Joanna Shisler

Mike & Mary Anne Hengehold

Donald & Lynn Hengehold

Dr. Ingle

Brian Shephard

Kimberly Janning

Beatrice Kaczmarek

Emma Kaelin

Amanda Hayes

Lynne & Mike Kehoe

Jerome & Judith Dierig

Cara Lier

Christine Reed

Jim Ling Family

Gerald & Carol Ling

Kyle Lyons

Richard Palmer

Mr. & Mrs. R.J. McCabe

Phyllis & Brent Cable
Catherine & Richard Harvey

Mark & Louise McMath

Marla McMath

Leslie Muck

Goyer Management International Inc.

River Metals Recycling

Scott Laurenti

Jerry and Jackie Reinert

Lisa & Chad Tucker
Reinert Manufacturing Inc.

Amy Schlachter

Ken & Susan Schlachter

John Thomas

Joe Yanes

Tammy Weidinger

Paul & Donna Perozek

Eli Weidinger

Tammy & Kenneth Weidinger

Ken & Tammy Weidinger

Eli Weidinger

Sarah, Mary, Johnny, & John Williams

Barb Noble

IN MEMORY OF

Juanita Arnold

Darren Wright
Marlene Wright

Terry Baute

Cynthia Metz

Edward Bessler

Irmaleen & Ralph Drees

Laura Blankenship

Cicely Ingram

Robert Borchers

Deborah Borchers

Robert & Rosemary Borchers

Kevin & Nancy Vance

Journey Brummett

William & Thelma Carpenter

Barbara Burton

William & Thelma Carpenter

Sarah Clore

Mark & Laurel Weitendorf

Terry Craig

Jaqueline Brumm

Fred Fischer

M. Fischer

Gene Harden

Bonnie Winters

Ray & Linda Hatton

Kassie Hatton

James G. Hollers

Aneta & Robert Helmer

Cynthia Holt

Lynne Baker
Marlena Ballis
Judith Chambos
Terry David
Daniel & Judi Dilts
Robert Dilts
Todd & Nancy Guenther
Marlene Letsinger
Daniel & Carol Points
Nancy Staurovsky
Audra Steele
The Slyder Cup
Villa Madonna Academy
Susan & Dennis Wolfe

Robert Hoppenjans

Robert & Marlene Hoppenjans

Tom & Ruth Jones

James & Sheila Jones

John Tim Kennedy

Janice Kennedy

Nora L. Kimbrough

William & Thelma Carpenter

Jim Kocher

Joseph Zureick

Sathya Kothandram

Molly Becker
Robert Hedrick
Corrie Loeffler
David Martin
Tina Raley
Scripps Howard Foundation

Victoria Lindsay

Ruth Walz

Robert & Gertrude Lorenz

Edward Lorenz

Lillian & Nelson McCormick

Lisa McCormick

Sharon McLaughlin

Edna Chiesa
Ken & Margaret Geiger
Joyce Rose

David Miller

Charles & Carol Roettger

Doratheia Porter

Kirk Porter

Margaret Prater

Jennifer & Amy Wiley

Christopher Ryan

James Glass

Edward Joseph Sander

James & Diane Sander

Bobby 'Big Steff' Steffen

Thomas & Kathleen Gerrein

Ed Stevie

Kathleen Stevie

Jordan Brianna Story

Lisa Fields
Noel & Donna Humphries
Cheryl McGraw
Megan Montgomery
Charles Owen
Harvey & Nancy Richardson
Edward Sawicki
David Swingley
Duane Trevor

Urbana City Schools

Joseph & Joan West

Ray Thompson

Nancy & James Beck
Robert & Barbara Beck
Thomas Beck
Donald & Diana Lehmkuhl
Michael & Jean Listerman
Lori Luken
Daniel & Angela McAlone
Jennifer & Mark McGinnis
Diana & Henley McIntosh
Alan & Gina Mielcuskny
Douglas Portmann
Marcia Riegler
Laura Rohling
Jack & Marlene Snodgrass
John & Carolyn Stroup
Thomas & Georgia Zimmerman

Ray & Carol Thompson

Timothy Downard
Stephen Gerard

Linda Louise Verst

Joel Folman
Rachel Foot
Michelle Foster
Michael & Kristy Heisler
John Humpert
Edward & Trudia Mason
Karen Smith
Douglas & Delia Williams
Kathryn Yeager

Darlene Walker

William & Thelma Carpenter

Ella Peachie Walker

William & Thelma Carpenter

Katy Young

David & Anita Freeman
Ken Germain
Theodore & Juanita Gokey
Linda Kamphaus
Lori Krafte
Jacqueline Schneider
Jane Walker

IN MEMORY OF TALIA FRYE

The Talia Frye Future Fund has been established to support the professional growth and development of Brighton Center and Brighton Properties staff by helping to cover the costs associated with continuing education. Talia believed deeply in people and their professional growth and development. She was a life-long learner and was especially committed to growing her leadership and that of others. Through this Fund, Talia's love of learning and investment in others will live on.



Hope Arthur
Jason Ashbrook
Rachel Aucott
Chelsea Back
Thomas & Maureen Bates
Alex Bauer
Mary Bradburn
Michael Bradhold
Jeremy Braun
Jules Breslin
Sue & Tom Breving
Robert & Helen Brewster
Jody Haacke Brosey
John & Mary Bruggen
John Bruggen
John & Emily Burton
C-Forward, Inc.
Bruce & Theresa Canfield
Alexandra Cardosi
Kevin & Linda Chaney

Jessica Cleek
Lauren Copeland & Nathan Price
Rajvi Desai
Jeremy Donelan
Correy & Erin Eimer
Gregory & Margaret Engelman
Stephen & Marianne Fieger
Charles & Connie Flood
Robert & Steve Ford
Amy & Brian Ford
Gary Francis
Mary & Jerry Frankenhoff
Christi Godman
Paul Gottbrath
Kelly Gould-Benhase
Diana Grady
Greater Cincinnati Foundation
Charles & Diane Hammond
Mike & Jennifer Hansert

Ellen Haskell
Kassie Hatton
Mary Hecht
Richard Hughes
Eric & Tricia Johnson
Barbara Johnson
David & Elizabeth Koeninger
Lakeside Christian Church
Gail Lewin
Jay Lewis & Heidi Murley-Lewis
Ryan & Jamie Linkugel
Kathryn Luning
Holly Mazzocca
Mark & Susan McDonald
Laura Menge
Danielle Meyers
Kathy Miller
June Miller
Christina Misali
Michael & Renee Napier

National Fund for Workforce Solutions
Jerry & Bonnie Owens
Polly & Kenneth Page
Marty Page
Darlene Parrillo
James Paxton
Greg & Linda Price
Russ & Pam Proctor
Romar Management Co.
Blair Rush
Annie Ryan
Tom & Denise Schamer
Joseph & Kathie Schamer
David & Beverly Schuster
Regina & Richard Schweer
Nadina Shields
Janet Sink
Lisa Sladeck
Madison Smith

Robert & Melissa Sommer
Sharon Statzell
Angela Taylor
Amanda Townsend
Transitions
Janice Urbanik
Tricia Watts
Tammy & Kenneth Weidinger
Sarah Weidinger
Jennifer & Amy Wiley
Catherine Willenbrink
Wonda & John Winkler
Canis Wirth
Jerry & Marilyn Wisher
Christine Wisher
Joyce Wolking
Greg Zaskowski
Anthony & Geraldine Zembrodt

ANNUAL DONORS

July 1, 2022 - June 30, 2023

LEGACY

\$10,000 and above

Anonymous
American Mortgage Service Co.
Blue Star
Centene Corporation
Charles Schwab & Co. Inc.
Churchill Downs
Duke Energy Foundation
Estate of Richard Schmeing
Estate of Ron Turner
Fifth Third Bank
Greater Cincinnati Foundation
Fred & Betty Jo Haas
Michael & Mary Hengehold
Horizon Community Funds
of Northern Kentucky
Joyce "Brenda" Hoskins
Revocable Trust
Interact for Health
Jack J. Smith, Jr. Charitable Trust
L&L Nippert Charitable Foundation
Miramar Charitable Foundation
Morgan Stanley
Northern Kentucky Association
of Realtors Inc.
Northern KY Restaurant Association
Payroll Partners Inc.
PNC Institutional Asset Management
Power Inspires Progress
ReNewport
SC Ministry Foundation
Scripps Howard Foundation
St. Elizabeth Physicians
The Adam R. Scripps Fund
The Andrew Jergens Foundation
Carol Ann and Ralph V.
Haile, Jr. Foundation
The Louise Taft Semple Foundation
The R. C. Durr Foundation, Inc.
The Wyler Family Foundation
TL Ashford & Associates, Inc
Truist
U.S. Bank Foundation
United Way of Greater Cincinnati
WellCare
YourCause, LLC

LEADERSHIP

\$5,000 to \$9,999

Al Neyer
American Endowment Foundation
Apartment Association Outreach, Inc.
Biller & Kimble LLC
C-Forward, Inc.
Cartamundi Entertainment
Brian & Carrie Crecco
David and Ann Early Foundation
Gregory & Susan Depenbrock
Rajvi Desai
Dollar General Literacy Foundation
Duke Energy Corporate
Enterprise Holdings Foundation
Blair Giesting
Elizabeth Hammersmith
Honorable Order of Kentucky Colonels
Sarah & G. Edward Hughes
Huntington National Bank
King Baudouin Foundation
Mark & Susan McDonald
Christina Neises

Northern KY Chapter of the
Kentucky Restaurant Association
Gary Rosing
Joseph & Virginia Schmidt
St. Elizabeth Healthcare
The Hueneker Foundation Trust
The Papa John's Foundation, Inc.
Tier1 Performance
Union Savings Bank
U.S. Bank
Tammy & Kenneth Weidinger
Jennifer & Amy Wiley
Wonda & John Winkler

COLLABORATOR

\$1,000 to \$4,999

Airon Manufacturing
Damon & Anitra Allen
Lauren Allhands
altafiber
Amazon
Amerasia Café & Bar LLC
American Cutting Edge
American Fundraising Foundation, Inc.
Nicole Austin
Barnes Dennig
David & Rebecca Barron
Jake & Maggie Bartel
Mindy Bartel
Ellen Bates
Beacon Electrical Contractors
Eric Beck
Janet & Ronald Beckemeyer
Best Furniture
Donna & Kevin Bloemer
Deborah Borchers
Selena Bowling
Bowling Carpet
Brands Insurance Agency, Inc.
Sara & Brandon Bray
Robert & Helen Brewster
Pamela Brewster Collar & William Collar
Jo Ann & Michael Brown
Jaqualine Brumm
Christine & Flo Buendia
Michael & Michelle Burdett
Nicole Carter
Kent Cashell
Celanese Foundation
Central Bank
Paula Chmielewski
Clark Schaefer Hackett
Lauren Copeland & Nathan Price
Barrett Corey
Brienne Creamer
Carla Cubert
Dance Express LLC
Rita & Tim Daniels
Mary Decker
Deloitte
Norman & Lisa Desmarais
Donald R. Frey & Company, Inc.
Duke Energy Corporation PAC
Jennifer Ehrhardt
Correy & Erin Eimer
Susan & Donald Embs
Enterprise Holdings Inc.
EQS Inc
James Evans
Mark Exterkamp & Melinda Jackson
Oakley & Eva Farris
Barbara & Andrew Fath
First Christian Church
First Presbyterian Church
Sue Flick

Florence Baptist Temple
Jason Foley
Dellisa Ford-Edwards & Daren Edwards
Freestore Foodbank, Inc.
Donald & Elsa Frey
Frontstream
Frost Brown Todd, LLC
Talia Frye
Fuller Family Charitable Trust
Rita & Dennis Geiger
General Electric Credit Union
George and Mary Jo Budig
Family Foundation
Gary Gikison
Thomas & Nancy Gilman
Scott & Emily Detmer-Goebel
Vernon & Joan Goetz
Grant Thornton LLP
Jenn Greber
Jonika Greene
Greta Hoffman Attorney at Law PLLC
Mark & Susan Grimme
Kevin & Dawn Gronck
Daniel & Elaine Gronck
Guardian Savings Bank
Lara & Mark Guttadauro
Fred & Kelly Haas
Mike & Jennifer Hansert
James & Hannah Harris
Jeremy & Ainslie Hayden
Lauren & Andrew Head
David & Patricia Hehman
Heritage Bank
Tony & Jane Herms
Mary Hertzman
HHC Next, LLC
Horan Associates, Inc.
Bonnie & Carl Hosea
Hub + Weber Architects
Human Nature
James C. & Gayle F. Davis
Family Foundation
Paul & Lisa Johnson
Eric & Tricia Johnson
Barbara Johnson
Johnson Investment Counsel, Inc.
Tony Johnston
Judy Rouse Family Fund
Kasle Realty
Kate Kassis
Kemba Credit Union
Seetharaman Kishor
Patrick & Clara Klocke
David & Elizabeth Koeninger
Kroger Community Rewards
KYASAP of Northern Kentucky
Michael & Erin Lakin
Laura Lamb
Thomas Lampe
Landstar Transportation Logistics, Inc.
James & Diane Lenhoff
James & Sylvia Liles
Logicalis
Kathryn Luning
Todd & Karen Majors
MC Roofing Enterprises LLC
Shaun & Jennifer McCloskey
Robert McCord
Julia McGivern
Merrill Lynch
June Miller
Model Property Development, LLC
Ken & Alison Muth
Nederland Entertainment LLC
Victor & Wilma Needham

Xochi Nelson
Newport Foundation, Inc.
Newport Millennium Housing
Corporation IV
Jim & Sharon Nichols
Sarah Niese
NKY Hospitality LLC/Hampton
Inn & Suites
NKY Hates Heroin
Northern Kentucky Convention &
Visitors Bureau
Jane Oberschmidt
OMI Industries
Trisha Owens
Eric Owsley
PalletOne Headquarters
Richard Palmer
Paradigm Pain and Spine Consultants
Gary & Sandy Peddicord
Pepsi Beverages Company
Paul & Donna Perozek
Peter Paul Office Equipment
Pivot Realty Group
Anita Prater & Lisa Stewart
Chris & Therese Quitter
Terry Rasche
Timothy & Barbara Rawe
Todd & Debora Reach
Annamarie & Dan Reilly
Lyle & Jean Ritze
River Metals Recycling LLC
Roman Management Co.
James & Barbara Rowland
Robert & Tracie Saelinger
William Salisbury
Jessica & Ross Schierling
Karen Schmidt
Nancy Schofield
David Schuler
Tony & Karen Schweier
SECO Electric Co., Inc.
Maida & Chuck Session
Alan Sherry
Clifford Shisler & Linda Heath
Keith Siereveld
Tom Simpson
Smoke Justis LLC
Robert & Melissa Sommer
Phil Sousa
Spirit of Construction Foundation
St. Timothy's Parish
Starbucks Foundation
Steven & Sue Steller
Mark & Karen Stephens
Stephanie & Douglas Stiene
The Butler Foundation
The Joe Burrow Foundation
The Marge & Charles J.
Schott Foundation
The Turner Construction
Company Foundation
The United Church of Christ
U.S. Bank National Association
UBS
Derek & Susan Van Amerongen
Viking Partners
Viox & Viox
Rachel & James Votruba
Walmart
Gene & Carol Weber
Webster Private Bank
Caroline & William Weltzer
Ted & Teresa Werner
WesBanco
West Chester Permit
Jason & Maria Wessel

Ransom Wick
Robert & Nancy Witte
Donald & Joyce Wojtowicz
Anthony & Geraldine Zembrod
Stephen & Candice Ziegler
Catherine Zimmer
Zins Plumbing, LLC.

INSPIRATION

\$500 to \$999

Elizabeth Adams
Aldi
ALM Global LLC
Michael Alsip
AmazonSmile Foundation
Aaron & Angela Anderson
Sara Anderson
Tyler Arlinghaus
Robert & Wendy Arnold
Kate & George Arthur
Asbury United Methodist Church
Mindy Baird
Douglas Beard
Herbert & Wilma Beigel
James & Rebecca Bilbo
Birchcreek Wealth Management
Kenneth & Shea Blackburn
Brandy Blevins
Lisa & Richard Boehne
John Borchers
Allyson & Mary Bridewell
Stephanie Brockman & Coriell Lewis
Mark Bukala
John & Emily Burton
Anne & John Busse
John & Carla Cain
Margaret Callahan
Campbell County Retired
Teachers Association
Alexandra Cardosi & H. Thomas Darnall
Kevin & Linda Chaney
Combined Federal Campaign
Jamie Coyle
Daughters of the American Revolution
Dayton Foundation Depository, Inc.
Edward Deitemeyer
Ashley Dejonckheere
Cecelia & Ken Dorger
Ronald & Emily Droege
Todd Duesing & Thomas Haggard
East Row Garden Club
EDJ Inc
John Enzweller
Evelyn Mae Family Fund
Kelly Everhardt
Dan & Renee Fagel
Fastenal Company Purchasing
Meghan Fedders
Patricia Ferris
First Financial Bank
Laurel & Gerald Fitzgerald
Florence Lions Club
Karen Franz
Connie Gabbard
Kevin Gessner
Gary & Sharon Graff
Grant County Youth Athletic Association
Robert Green
Madison Gronck
Matthew & Elizabeth Guy
Ellen Haskell
Mary Hecht
Matthew Heeman
Highlands Middle School
Cassie Hitch

ANNUAL DONORS (July 1, 2022 - June 30, 2023)

Helen Horton
 Patricia Horwitz
 Jeffrey & Beth Hudepohl
 Lawrence & Marlene Humbert
 Erin Hyatt
 Ingage Partners-
 Pay It Forward Cincinnati
 John C. Feinauer Welding, Inc.
 Dorisa Johnson
 Julia Johnson
 John & Louise Jordan
 Kenton Heights Woman's Club
 Key Bridge Compliance LLC
 Jay & Renee Krebs
 Harold & Marcy Kremer
 Gary Lang
 Scott Laurenti
 Michelle Lehan
 Timothy & Michele Lichter
 Ryan & Jamie Linkugel
 Steven & Kimberly Long
 Edward Lorenz
 Mark & Mary Lundstrom
 John McKenzie
 Mellott & Mellott, P.I.I.
 Richard Mierenfeld &
 Kimberly Heimbrock
 Mission Church of God
 Elevedin Mujakic
 Kimberly Mullins-Ward & Dan Ward
 National Financial Services, LLC
 Newport Board of Education
 Jaimie Niemczura
 Edward Nolan & Michele Moses-Nolan
 Erica Owens
 Kirk Porter
 Timothy & Jayme Powell
 Sharon Prather
 Procon Pacific LLC
 Les & Nina Prysock
 Matthew Purpus
 John & Patricia Ramler
 Joanna Rankins
 Jared Reinecke
 Jeffrey & Stephanie Rensing
 Alan Riedinger
 Grant Riley
 Robert Half International Inc.
 Bill Roeding
 Joy Rutan
 Barbara Sasser
 Doug & Lorie Schaefer
 Patricia Schilling
 Schilling Properties, LLC
 Patricia Schlecht
 Christine Schwalbach
 Chris Seger
 Elaine Semancik
 Jason Sheets
 Debbie Simpson
 Brice Smallwood
 Tina Smith
 Madison Smith
 David & Dolores Sommerkamp
 Deana & Todd Sowders
 Julie Sparks
 John Spence & Colleen O'Toole
 St. John's Unitarian Universalist Church
 St. Mary's PTC
 Stephanie Steffen
 Richard Sterling
 Stock Yards
 Thomas & Christy Stoll
 Max Swartz
 The Standard Employee Giving

Rachel Thomas
 Rebecca & Dennis Timberlake
 Alicia & Tyrone Townsend
 Trinity 163
 Stephanie Turner
 Richard & Karen Vaughn
 Edward & Mary Lou Vogel
 Julie Waldroop
 Sandi Wethington
 Stephen Willoughby
 Kim Wolf
 Wolf Steel U.S.A. Inc.
 Lisa Wormald
 Caroline Wormald
 Angie Yellina
 Brad & Katherine Zapp
 Timothy & Thea True
 Cheyenne Ross Winter

HOPE \$100 to \$499
 Niomig Almodovar Aceytuna
 Jennifer Adkins
 Austin Alcorn
 Martha Allen
 Brian Allison
 Christy & James Alwell
 James Amato
 Mark & Elizabeth Anderson
 Gordon & Sarah Arey
 Sophia Armor
 Michael & Laurie Arnold
 Hope Arthur
 Jason Ashbrook
 Phyllis Atwell
 Chelsea Back
 Taylor Baith
 Phyllis Ball
 Charlene & John Bankemper
 Barry & Donna Barth
 Thomas & Maureen Bates
 Nancy & James Beck
 Raymond & Elizabeth Beck
 Susanne Becker
 Wayne & Barbara Beimesch
 George & Edith Bentley
 Victoria Berling
 William & Cynthia Biecker
 Don Biehl
 Biggby Coffee
 Bihl Brothers Jewelers
 Yvonne Bishop
 Brenda Black
 Pamela Black
 Valerie Bogdan-Powell
 Boone County Chapter DAR
 Diane Booth
 Charles Boughner
 Bradie Bowen
 Bowen Family
 Mary Boyer
 Darene Bradford
 Peggy Bramble
 James Bramer
 Doug & Sheila Bray
 Robin Bray
 Stephen & Meredith Brennan
 Lawrence Brennan & Karen Enzweiler
 Jules Breslin
 Sue & Tom Breving
 Bridgeview Box Park
 Brighton Center Seniors
 Robert Brockman
 Teresa Brolley
 Cara Brooks
 Jodianne & Aaron Broomall

Jody Haacke Brosey
 Lynn & Michelle Brothers
 Frances Brothers
 Danae & Jacob Brown
 Robert & Rebecca Brown
 Bonita & Wesley Brown
 Kathleen Brown
 Christina & Craig Bryant
 Sue Buescher
 Michelle Bullis
 Guy Burnham
 Terry Burns
 Traci Cafferky
 Luke Cahill
 Rebecca Camarota
 Bruce & Theresa Canfield
 David & Rebecca Capella
 Paul & Mary Carl
 Shannon Carlin
 William & Thelma Carpenter
 Dawn & Mike Carson
 Carole Carter
 Jeffrey Carter
 Alley Chadwell
 Chris Christensen
 Cincinnati ICO
 Nancy Clark
 Carrie & Zack Collins
 Deborah & Marc Combs
 Thomas & Ethel Comte
 Anne Coomes
 Robin Cooper
 Dave & Betty Core
 Carey Corp
 Julie Crow
 Patrick Crowley
 KariAnn Sloan Curry
 Sanad Dababneh
 Deborah Daly
 Lisa Daniel
 Brad Dansberry
 Terri Darpel
 Robert & Carol Davies
 Kenneth & Lisa Davis-Roberts
 John & Brenda Dawkins
 Gabrielle Deaton
 Kellie Demaree
 Lisa Denham
 Kathryn Deno
 Tiffany Derkson
 DHL E Commerce
 Marian Dibert
 Jerome & Judith Dierig
 Mary Dietz
 Robert Dilts
 Kenneth Doggett
 John & Jane Domaschko
 Jeremy Donelan
 Maryanne Dorn
 Timothy Downard
 Irmaleen & Ralph Drees
 Drumm Inc.
 Angie Dudderar
 Cynthia & Edward Duesing
 Marlene & Michael Duffy
 Dianne Dunn
 Moira E Frey
 Angela Easton
 Lea Edmonds
 Edward Jones
 Chris Egan
 William Eichelberger
 Norma Eilers
 Trisha Emish
 John Enzweiler

Erlanger United Methodist Church
 Louis & Marilyn Esselman
 Joyce Evans
 Stephanie Fariello
 Laura & Paul Farmwald
 Andrew Faust
 George Fee
 Theo Feig
 John Feldkamp
 Tammy Ferrara
 Margaret Fightmaster
 Mollilynne Fischer
 Charlie & Susan Fisher
 Brad Fletcher
 Gabby Fletcher
 Tom Fogarty
 Gary Foose
 Rachel Foot
 Robert Ford & Steve Crites
 Amy & Brian Ford
 Sheila Forman
 Michelle Foster
 Bill & Joy Fotsch
 John Foust
 Gary Francis
 Mary & Jerry Frankenhoff
 David & Anita Freeman
 Kairi Freudenberg
 Garrett Frey
 Becca Freyhof
 Charles Frick
 Teri Friedrich
 Pamela & Neal Frink
 Anecia Gandy
 GAP Inc.
 Ken & Margaret Geiger
 Stephen Gerard
 Sarah Gerchman
 Deborah Germann
 Thomas & Kathleen Gerrein
 Mary Gibson
 Steven Ginter
 Girl Scout Troop 1383
 Suzette Glaab
 Judy Goderwis
 Christi Godman
 Elizabeth Goetz
 Dorothy & Roy Gold
 Chris Golembiewski
 Kelly Gould-Benhase
 Goyer Management International Inc.
 Diana Grady
 Janet Grau
 Michael & Elizabeth Griffith
 Dorothy Grothaus
 Todd & Nancy Guenther
 Thomas & Jenny Guidugli
 Glenn Gunning
 Kelly Guthrie
 Jim & Cheryl Haas
 Laura Haas
 Kristin Hagedorn
 Lucas & Mellissa Hail
 Keith Haithcock
 Kira Hammergren
 Charles & Diane Hammond
 Hardegree Tool Inc.
 Jonathan Hartness
 Catherine & Richard Harvey
 Matilda Hasson
 Lorraine Haverkamp
 Dorothy & Charles Hayes
 Amanda Hayes
 Eric Heck
 Donald & Megan Heeb

Mary Kay & Roger Hehman
 Jacqueline Heiert
 Charles & Judith Heilman
 Cheryl Helmers
 Donald & Lynn Hengehold
 Mike & Melissa Hertzzenberg
 Joan Hickey
 Ann Hicks
 Wesley Hicks
 Highland United Methodist Church
 Thomas & Michael Hils
 Tricia Hodapp
 Beth & Randy Hodge
 Julie Hoffman
 Larry & Lorena Holladay
 Molly Hollman
 Kathleen Holzderber
 HOMEARAMA
 Robert & Marlene Hoppenjans
 Sheila & R. Horan
 Erica Horton
 Sandy Huber
 Carl & Carol Huether
 Maggie Huey
 Sandy Huey
 Thomas Hugenberg
 Christine Huggard
 Weston Hughes
 Larry & Melissa Humbert
 John Humpert
 Justin Ishmael
 Ivey Mechanical Co. LLC
 Kathy Janson
 Paul Johnson
 Dan Johnson
 James & Sheila Jones
 Richard & Mary Jones
 Tina Jung
 Justgive - Great Nonprofits
 Jeanne Karrick
 Tony Keckeis
 Kelly E & Kelly A McMahon
 Giving Foundation
 Beverly Kelsch
 Brenda Kenyon
 Russell & Susan Kerdloff
 Brian Kerdloff
 Amy Kerdloff
 Ronald & Carolyn Ketterer
 Tina & Tony Kidwell
 Chad King
 Michael & Beverly Kleier
 Mary Lou Klein
 David & Janice Klocke
 Amy Knapke
 Kathy & Andrew Knepfle
 Jamie Koch
 Erica Kohlman
 Kohrs Lonnemann Heil Engineers, Inc.
 Paul & Amy Kremer
 Diane & Barry Kruer
 Lakeside Christian Church
 Kevin Lamb
 David Landwehr
 Ethel Lane
 John & Julie Lange
 Pamela Lasita
 Andrew Laskey
 Beth Latto
 Lawler Hanlon VFW Post 5662
 William Lecher
 Edward Lehmann
 Donald & Diana Lehmkuhl
 Lynne Leinart
 Angie Leirsing

ANNUAL DONORS (July 1, 2022 - June 30, 2023)

Jud Leong
 Jay Lewis & Heidi Murley-Lewis
 Gerald & Carol Ling
 Benjamin London
 Mike & Carolyn Longland
 Mike Loyson
 LPL Financial
 Theresa Ludwig
 Douglas & Jane Lyons
 Barbara Manyet
 Marathon Petroleum
 John & Margaret Marlow
 Catherine Marshall
 Julie Mart
 Brian Martin
 Corey Marty
 Andrew & Emily Mason
 Marsha Massey
 Cody Mauch
 Tiffany Mayse
 Holly Mazzocca
 George & Frances McAllister
 Daniel & Angela McAlone
 Christina McCaughan
 Rachel & Gary McCormick
 Lisa McCormick
 Jacob McDonald
 Amy McIntosh
 Angie McMillen
 Michael & Mary Anne Meagher
 Dennie & Claudia Meeks
 Jack & Brenda Mehalko
 Stephen & Jane Meier
 Laura Menge
 Gary & Kathy Menne
 Thomas & Janet Mentrup
 Megan Meyer
 Paul Meyers
 Lisa Middendorf
 Alan & Gina Mielcuskny
 Mike Meinze Charitable Foundation
 Sarah Miles
 Robert & Vicki Miller
 Stephen Miller
 Diana Mitchen
 Robin Mohring
 Michael & Carol Monnin
 Danielle Montgomery
 William & Deborah Moore
 Anna Moore
 Richard Moore
 Richard & Anita Morris
 Donald & Frances Mosser
 Konrad Moszczynski
 Darlene Motley
 Dale & Patricia Mueller
 Richard & Julie Mueller
 Christopher Mueller
 Leisa Mulcahy & Chris Snyder
 Selena Murdoch
 Twila Murphy
 Ramu Murugesan &
 Omdevasena Thirugnanam
 Michael & Renee Napier
 National Fund for Workforce Solutions
 Nearly New Consignment
 Neighborhood Barre Covington
 Ruth Neltner
 Lawrence Neltner
 Tiffany Golden Neri
 New Beginning Community Church
 Sara Newberry
 Thomas Nienaber
 James & M. Niewahner
 Patricia Nolan

North American Properties
 Christopher & Robin Novak
 Debra Oaks
 Annetta Kay Osborne
 Carol & Stuart Oehrle
 Joseph Olszewski
 Jennifer Oney-Hill
 David Owens
 Cathy & Peter Owsley
 Polly & Kenneth Page
 Deborah Panko
 Thelma Parker
 Sean Parr
 Patricia Parrott
 James Paxton
 Steven Peed
 Stephen & Judith Peelman
 Allan & Janice Perkins
 Mary & Roger Peterman
 Kelly Peters
 Gina Pingleton
 Laura & Adam Pleiman
 Mary Anne Plummer
 Windy Pollitt
 Kelly Porter
 Deb Potochnik
 Chris Powers & Emily Wolff
 Victoria Pratt
 Greg & Linda Price
 Russ & Pam Proctor
 Mindy Puckett
 Veronica Pugh
 Joyce Randall
 Patricia & Kenneth Rasor
 Tom Rasp
 Greg & Evelyn Rath
 Amanda Rauch
 Beth Raum
 Ronald & Mary Rawe
 Richard Reid
 Reinert Manufacturing Inc.
 Pascal & Jean Renouil
 Gary Reynolds
 Michael Ries
 Julie Riess
 Cody Robinson
 Laura Rohling
 Vicki & Robert Romito
 Joyce Rose
 Blair Rush
 Diane Russ
 Paul & Margaret Ruth
 Dana & Michael Ruwe
 Molly Saks
 James & Diane Sander
 Tasha Schaffner
 David & Carolyn Scheper
 Jim Schierer
 James Schilling
 Linda Schilling
 Ken & Susan Schlachter
 William & Rebecca Schmidt
 Vira Schmidt
 Michael Schmidt
 Louis Schmidt
 Gregory & Diane Schneider
 Gina Schneider
 George Schneider
 Susan Schofield
 Shannon Schumacher
 Elizabeth Schumacher
 Keith Schutte
 Regina & Richard Schweer
 Kaelin Scott
 Donald Scott

Christopher Scowden
 Michael Seiter
 Stacie & Sean Selfe
 Hope Sharpe
 John Shea
 Jesse Shelburne
 Brian Shepard
 Joanna Shisler
 Erin Shull
 Ron Sickmeier
 Pat Sidler
 Jake & Kelli Sieber
 Megan Simmons
 Jennifer Sims
 Andrew & Arpita Singh
 Mike Sipple
 Doug Sipple
 Shad Sletto
 William Sloan
 Sandra & Greg Smith
 Joel Smith
 Meghan Smith
 Madison Smith
 Paul Solomon
 Brenda Spade
 Edward & Arlene Sparks
 Carol Sparks
 Kimberly Springer
 Steven Springer
 Erin St. Jeor
 St. John ACC
 St. John United Church of Jesus Christ
 Brandi Stallman
 Jason Stamper
 Amanda Stanken
 Cathy & Jerry Steele
 Audra Steele
 Frederick & Sherry Steinbeck
 Katie Steuart
 Nicholas Stevens
 Kathleen Stevie
 Laura & Frank Stoddart
 John & Carolyn Stroup
 Davina Sullivan
 Kathy Sullivan
 Susan Swain
 Phoebe Swank
 Taft Stettinius & Hollister LLP
 Susan Tarvin
 Juliann & Dan Taylor
 Benjamin R Taylor
 Maria Tenjo
 Amber Thacker
 The Columbus Foundation
 The Kish Company
 The Slyder Cup
 The Standard
 The Yoga Bar
 Jeffery & Joan Theiss
 Alan & Dianne Thomas
 James & Georgena Thomas
 Leslie Thomas
 Thomas More University
 Gregory & Kathleen Thomes
 David Thompson
 Hugh & Connie Thomson
 Michelle Tibbs
 Lawrence & Mary Ann Tiemeier
 Kerstina Tobergte
 Total Quality Logistics, LLC
 Amanda Townsend
 Peter Tran
 Transitions
 Duane Trevor
 Tri-State Buildings, Inc.

Michele Truett
 Mike & Lorie Turner
 John Turner
 Debra Turner
 Mark Tyler
 United Way of Greater Atlanta
 United Way of
 Southwestern Pennsylvania
 Janice Urbanik
 Chelsea Vaal
 Kevin & Nancy Vance
 Justin & Mary Kate Vanderglas
 Lee & Michelle Veazey
 Nancy Velten
 Justin Verst
 Verst Group Logistics, Inc.
 Gloria Vetter
 Jeff & Jamie Wagner
 Jane Walker
 Philip Walter
 Mary Joan Ware
 Jerry & Katherine Warner
 Jessica Warner
 Megan Watters
 WCPO
 Marissa & Andrew Weast
 Leah Weaver
 Dedra Webb
 Teayha Webb
 Michelle & Gloria Weber
 Amy Weber
 Cybelle Weeks
 Sarah Weidinger
 Eli Weidinger
 Jeff & Angie Wells
 Mike & Trisha Wendling
 Jacquelyn Wheeler
 Elizabeth Wheeler
 Justin & Allison White
 Roberta White
 Andrew White
 Sharon & Carl Williams
 Glenn & Elaine Williams
 Michael Williams
 Cameron Williams
 Philip Wilson
 Martin & Rebecca Winchell
 Timothy Winkelman
 Bonnie Winters
 Canis Wirth
 Christine Wisher
 Wooden Cask Brewing Co.
 Anne Woods
 Amy Wooldredge
 Kathy Wooten
 George Wyatt & Cheryl Stewart
 Rhonda Yaden
 Joe Yanes
 Kathryn Yeager
 Melissa Young
 Min Yu
 Paula Zalla
 Lizzie Zerhusen
 Kelly Zilli
 Mark & Patricia Zilliox
 Thomas & Georgia Zimmerman
 Charles Zimmerman

COMMUNITY UP to \$99

3M Foundation
 Lisa Abrams
 Karli Adams
 Adeola Adeyemi
 Katie Aguilar

Ernesto Albos Jr.
 Mark Allen
 Karen Allen
 Alicia Alley
 Alpha Kappa Chapter of AAK
 Michael & Leona Amundsen
 Nate Arlinghaus
 Alia Arlinghaus
 Robin Arnold
 AT&T
 Rachel Aucott
 David & Melinda Bailey
 Lynne Baker
 Doug Baldrige
 Marlena Ballis
 Brian Bamberger
 Drew Bamberger
 Tracy Barber
 Amy Barnett
 Ronald Barth
 William & Mary Etta Bass
 Michael Batdorf
 Alex Bauer
 Alexandria Beach
 Michelle Beagle
 Robert & Barbara Beck
 Thomas Beck
 Molly Becker
 Melissa Becker
 Crystal Becker
 Rose & Frank Beckerich
 William Beckmeyer
 Melissa Beerman
 Sharon Bennett
 Abigail Katherine Benzing
 Mark Bezold
 Bircus Brewing Co.
 Victoria Black
 Laura & Jim Blair
 Margaret Boehmer
 Stephanie Bogenschutz
 Heather Bokon
 Michael Bosse
 Chasity Bothman
 Tamara Bowen
 Tina Boyer
 Mary Bradburn
 Michael Bradhold
 Marina Branch
 Brand It For Good
 Nicholas Brauer
 Jeremy Braun
 Tony Brinkdopke
 Brian Brockman
 Frank & Donna Broering
 Nikki Broughton
 Melvin & Shirley Brown
 KeyShawn & Micaela Brown
 Donna Brown
 Ricardo Brown
 John & Mary Bruggen
 John Bruggen
 Tony Brune & Susan Daczko
 Paige Bruns
 Paul & Jean Buchman
 Ian Budd
 Rob & Debbie Burkardt
 Elaine Busse
 Gary Butsch
 Phyllis & Brent Cable
 Jack & June Cahill
 Karen Cain
 Yvonne & R. Callahan
 Janet Calme
 James Carroll

ANNUAL DONORS (July 1, 2022 - June 30, 2023)

Amanda Case
Jean Cate
Robert & Susanne Cetrulo
Claudia Chalk
Judith Chambos
Charity On Top Foundation, Inc.
Edna Chiesa
Carol & Jerry Clark
Jessica Cleek
Kelly Clements
Elizabeth Clos
James & Joan Coates
Mark & Sue Cohen
Sharon Coleman
Hazel & Hazel Conner
Anthony & Phyllis Conradi
Emily Costin
Curt Critcher
Harold Cromwell
Keara Curliss
Robert & Beth Dames
Margie Darby
Beverly Darlington
Terry David
Timothy Davis
Steven & Peggy Dehne
Cindy Dennis
Mike & Carol Desmond
John & Marsha Dewitt
Sammie Dietrick
Daniel & Judi Dilts
Rita Dixon
Lisa & Lisa Donnelly
Nicole Dooley
Nancy Doran
William & Regina Driehaus
Hanne Driscoll
Martin & Mary Due
Kevin & Jessica Duke
Becky & Kerry Duke
Lawrence & Margaret Dullaghan
Scott Dungan
Susan Dunn
Teresa Durso
Mike & Deborah Dutle
Kelly Dynes
Angela Edwards
James & Mary Eggemeyer
Sean Elam
Tyler Elders
DeAnne Ellis
Dan Ellis
Gregory & Margaret Engelman
Kathryn England

John Enzweiler
Diana Epperson
Patrick Erwin
Patty Evans
Matricia Fagin
Michelle & Harold Fardo
Leslie & Matthew Fath
Jason Faulkner
Albert Fedders
Haley Felber
Robin Felty
Vickie Feltz
Stephen & Marianne Fieger
Jerry & Linda Fields
Lisa Fields
First Bank
William & Janet Fischer
M. Judith Fischer
Kirsten Fletcher
Charles & Connie Flood
Clifford Flory & Wanda Griffith Flory
Laura Flowers
Joel Folman
Doreen Fornash
Paige Foss
Lauren Franzen
Isaac Frederickson
Mary Jo Fredrick
Sophia Freeman
Katherine Frizzell
Joyce & John Fryer
Calli Fugate
Joyce Gamm
Jarrod Garrett
Catherine Gellert
Christopher Germain
Ken Germain
Velda Gilliam
Shannon Gillum
Rosemary Glahn
Angela Glass
James Glass
Timothy Gleeson
Amanda Goins
Theodore & Juanita Gokey
Anna Gomulka
Ingrid Nunes de Souza Goncalves
Jeanpaulo Gonzalez
Rinki Goswami
Paul Gottbrath
Rebecca Gradoville
Dylan Graham
Robert Greene
Joan Gregory

Donald & Judith Griffin
Ryan Griffin
Jenny Griffith
Paul & Barbara Grunenwald
Molly Gubser
Maria Guthier
Heather Haake
Johanna Haegele
Rhonda Hampton
Kelli Handorf
Thomas Hansman
Mariah Harris
Robert Hart
Anthony Haskamp
Kassie Hatton
Lisa Hawkins
Dale Hayes
Jenna Heaphy
Mary Heck
Lekeyshia Heckler
Robert Hedrick
Dennis Heeb
Gina & Steve Heeg
David & Sheryl Heeter
Michael & Kristy Heisler
Aneta & Robert Helmer
Paul Hemmes
James Hendy
Meredith Henkenberns
Sarah Herp
Whayne Herriford
Joshua Hessler
David Hester
Amber Hester
Paige Hester
Charles Hester
Scott Hiance
Michael & Dawn Hils
William Hobstetter
Emily Hoffman
Tricia Hoffman
Mark & Linda Hogle
Scott Holland
Peyton Holman
Ray Holstein
Brian Hone
Cole Hopkins
Emily Hubbard
Richard Hughes
Paula Hume
Noel & Donna Humphries
Emilee Hunt
Cicely Ingram
Inspire Brands

Katherine Jackson
Jeff Jackson
Donna & Frederick Jebens
Donna Jebens
Robert Johnson
Melynda Johnson
Tasha Johnson
Judy Johning
Beatrice Kaczmarek
Niki & Doug Kallmeyer
Linda Kamphaus
Kasi Keating
Michele Kelley
Janice Kennedy
Shauna Kennedy
Sommer Kidwell
Will Kinnaird
Mary Kinsella
Dona Klein
Emily Klopp
Heather Knarr
Steven & Sarah Koetting
Alan & Barbara Korn
Amanda Koski
Lori Krafte
Beverly Kramer
Barbara & Harold Krantz
Patricia Kuether
Mary & Donna Laeace
Julie Laible
Tim & Melinda Lampke
Jada Landrum
Patricia Landwehr
Mary Lanier
Audrey Lantry
Kathryn Lantry
Rosetta Lee
Emily Lehn
Neil & Pearl Leonard
Emily & Mark Leopold
Marlene Letsinger
Gail Lewin
Tammy Liles
Alexis Lindsey
Derrick Link
Zack Lipp
Michael & Jean Listerman
Stella Lock
Corrie Loeffler
David Lohre
Jenna Longshore
Timothy & Cynthia Lucas
Lori Luken
Julie Mai

Trena Mains
Erin Majewski
Matt Mann
Addie Mann
Barb & Tom Manning
David & Kathy Manning
Emily Marble
Hannah Marlow
Edwardo Marquez
Lavar Marshall
David Martin
Dawn Martin
Dale Marx
Edward & Trudia Mason
Lisa Mason
Andrea McCarty
Jeffrey McCoy
Patrick McCutcheon
Krista McDonald
Melissa McDonald
Amanda McFarland
James McGarr
Cassie McGee
Jennifer & Mark McGinnis
Carol McGlone
Cheryl McGraw
Heidi & David McGregor
Diana & Henley McIntosh
Micaela McLean
Maria McMath
Matthew McPhillips
Linda Meier
Bethanie Mettling
Cynthia Metz
Hunter Meyer
Danielle Meyers
Microsoft Corporation
Mary Dean Miller
Kathy Miller
Josh Miller
Meredith Miller
Karen Minzner
Christina Misali
Lori Mitchell
Jordan Mize
Theresa Mohan
Megan Montgomery
Georgia Mook
Lisa Moore
Charles Moore
Erin Moran
Jack Moses
Janet Mott
Victoria Murphy

GET INVOLVED | JOIN OUR COMMUNITY OF SUPPORT



Give online at
brightoncenter.com/donate
or scan QR code



Become a
monthly donor



Check to see if your
company offers a
matching gift



Include Brighton
Center in your Will
or Estate Plan



Host a fundraiser
to benefit Brighton
Center



Collect Wish List
Items to support
our customers and
programs



To learn more about how you or your company/group can get
involved, email development@brightoncenter.com

ANNUAL DONORS (July 1, 2022 - June 30, 2023)

Valerie Murrel
Mark Nagel
Arnold Ortiz Natal
Joshua Naticchia
Gary Nelson
Network for Good
Jamie Neuspickle
Hayley New
Susan Niedzielski
Ethan Nitschke
Henry & Nancy Noble
Barb Noble
Kiersten Norbrothen
Fatima Nouhy
Yvonne Novasio
Rachel Odin
Barnabas Olatoyan
Angela Olliges
Stacie Olson
Natalie Orme
Rebecca Orr
Rodney Orr
Lyn Overman
Charles Owen
Jerry & Bonnie Owens
Marty Page
Katherine Papp
Charles & Gayle Parnell
Kim & Russell Parnell
Darlene Parrillo
Michael Parsons
Krishna Patel
Mary Beth Patterson
Clifford & Marilyn Perkins
Brandi Perry
Anthony & Deborah Pfeffer
Amber Phillips
PL Marketing
John & Jennifer Plummer
Danielle Poe
Daniel & Carol Points
Janice Popp
Douglas Portmann
Brenda Powell
Dana Pratt
Karla Price
Alexandra Prichard
Kevin Pustulka
Lauren Quill
Donald Quinn
James Raaker
Tina Raley
Dustin Ramler
Kevin Randolph

Jason Rapp
Matt Rarriack
Charlene Rasche
Debora Reach
Sonya Redmond
Christine Reed
Julie Rehkamp
Paul & Ruth Reiner
Suzanne & Robert Reinhold
Harvey & Nancy Richardson
Marcia Riegler
Thomas Riemar
Sharon Riley
Sophia Roberts
Adrienne Roberts
Amy Robertson Smith
Taja' Robinson
Samantha Robinson
Zachary Robke
Alyson Roeding & Kevin Wood
Charles & Carol Roettger
Charlene Rogers
Markus Rohner
Tina Rollinger
Janet Rossi
Angela Roth
Quentin Rowe
Patricia Rudy
Donna Ruef
Kevin & Madeline Rumker
Gail Ruschman
Annie Ryan
John & Patricia Saks
Treva Salmons
Robert Sander
Marcele & Kenneth Sanzenbacher
Katharine Saveliff
Edward Sawicki
Jack & Virginia Schaaf
Jim Schadler
Joseph & Kathie Schamer
Tom & Denise Schamer
Elena Schaub
Chadwick Schenk
Ben Schmerr
Kathy Schmitz
Rachel Schnatz
Elizabeth Schneider
Jacqueline Schneider
Mike Schneider
Joe Schneider
Lawrence & Carol Schreiber
Mark & Candice Schroder
David & Beverly Schuster

Terri Schwarber
John Schwing
Ellie Scott
Garrett & Beverly Scotty
Margaret Scripps
Charles & Rita Seger
Charles & Margaret Sensel
Tom Seyss
Eileen Shanahan
Liam Shanahan
Robert Shearer
Nadina Shields
Amber Short
Tashiba Shorter
Jeramine Simmons
Shivam Singh
Janet Sink
Scott Sivinski
Lisa Sladeck
Griffin Smallwood
Jennifer Smith
Darin Smith
Karen Smith
Joshua Snapp
Jack & Marlene Snodgrass
Peggy & Greg Sowders
Marla Specht & David Bird
Elizabeth Specht
Harold & Judith Spitz
Kimberly Spreder
Joey Stamm
Lindsey Staten
Sharon Statzell
Nancy Staurowsky
Allison Steffen
James & Beverly Stegman
Ruthann Stenger
Murphy Stephens
Martha Sterling
Robert & Lynne Stewart
Margaret Stieby
Carrie Stortz
Jeffery Stovall
Rick Straus
Dan Sudkamp
Andrew Sullivan
Kathy Sullivan
John Swank
David Swingley
Kevin Tankersley
Matthew Tanner
Loren Tapp
Target Newport
Roxanne Taylor

Angela Taylor
Demontez Taylor
Marie Testa
The Beauty Boost Cincy LLC
Bradley Thibodeaux
Robin & Michael Thomas
Matthew Thompson
Robin Thompson
Hannah Thompson
Thomas & Diana Timmerding
Tracy Todd
Stacey Tolle
Taa Tomondo
Julie Toole
Steve Tracy
Lisa & Chad Tucker
Steve & Pam Tucker
Richard Turner
United Way of Central Indiana, Inc.
United Way of Dane County
United Way of Northeast Florida
John Uptmor
Urbana City Schools
U.S. Bank Corporate
Yovani Velasquez
Cassandra Vercimak
Tim Vetter
Villa Madonna Academy
Pamela Voelker
Glenn & Margaret Wagenlander
Phyllis Wagner
Walgreens Newport
Zach & Katy Wall
Roger & Janine Walz
Ruth Walz
Ryan Ware
Fred & Joanne Warren
Debra Wash
Tricia Watts
David Wayman
Will Weber
Litany Webster
David & Cindy Weidinger
Mark & Laurel Weitendorf
Richard & Deborah Wells
Joseph & Joan West
Raymond Westenhofer
Debbie & Richard Westheimer
Lauren Westkamp
Melissa Whalen
Carol White
Jim White
Michael Widdis
Kim Wikette

Charles Wilkes
Catherine Willenbrink
Ariana Williams & Zachariah Smith
Douglas & Delia Williams
Michael & Melissa Williams
Linda Williams
Katie Wilson
Sherry Wiscovich
Jerry & Marilyn Wisner
Madelyn Wisner
Michele Wisner
Susan & Dennis Wolfe
Joyce Wolking
Jennifer Wright
Darren Wright
Marlene Wright
Roger Wright
Zac Wysinski
Thomas & Cynthia Youtsey
Jack & Linda Yungbluth
Greg Zaskowski
James Zeller
Robert & Paula Zembrodt
Xinyu Zhao
Cassandra Zimmerman
Joseph Zureick

**This listing reflects
monetary donations only
received between July 1,
2022 and June 30, 2023.
Thank You! Every effort is
made to ensure accuracy.
If you notice an error in
our donor listing please
contact (859) 491-8303
ext. 2407 or development@brightoncenter.com.**

**To make a donation, become
a monthly donor or make a
legacy gift, please visit
brightoncenter.com/donate
or mail a check to:**

**Brighton Center
P.O. Box 325
Newport, KY 41072**

Liz Herald Community of Support Award Carol Ann and Ralph V. Haile, Jr. Foundation



Carol Ann and Ralph V. Haile, Jr. Foundation has been an amazing partner and friend to the Center and has made significant investments across our programming over the years. They have generously supported the start-up and implementation of Northern Kentucky Scholar House, efforts at Homeward Bound Shelter, Brighton Recovery Center for Women, and Workforce Development, specifically in the space of Opportunity Youth. In 2016, the Haile Foundation supported a 12-month planning grant to engage partners serving Opportunity Youth to develop a plan that would help strengthen and support a coordinated, comprehensive, community-based system of services, which resulted in Opportunity House! Most recently, they stepped in to provide support for residents being displaced in Covington and Newport. This is amazing leadership! They care deeply about this community. They are giving, extremely passionate, and make a meaningful difference in support of our mission! For these reasons and many, many more, we recognize Carol Ann and Ralph V. Haile, Jr. Foundation with our Liz Herald Community of Support Award.

THE MISSION OF BRIGHTON CENTER is to create opportunities for individuals and families to reach self-sufficiency through family support services, education, employment, and leadership. We will achieve this mission by creating an environment that rewards excellence and innovation, encourages mutual respect, and maximizes resources.

Brighton Center, Inc., Board of Directors 2023-2024

Dan Groneck, Chair Retired, U.S. Bank	Ken Blackburn The Procter & Gamble Company	Jeremy A. Hayden Taft Law	Annamarie Reilly MCM, CPA's & Advisors	Justin Vanderklas Clark Schaefer Hackett
Eric Johnson, Vice Chair Grant Thornton	Bonita Brown Northern Kentucky University	Julia Johnson Retired, City of Cincinnati Metropolitan Sewer District	Sophia Roberts LifeCenter	Jamie Wagner Truist
Jake Bartel, Treasurer Birchcreek Wealth Management	Anne Busse Thomas More University	Dave Koeninger Retired, Millennium Physician Group	Joe Schamer SECO Electric	Wanda Walker-Smith Hamilton County Small Business Development Center
Alicia B. Townsend, Secretary U.S. Bank	Lisa Yeardon Casson CommonSpirit Health	Michael Lakin HUB Horan	Marianne Schmidt Retired, PNC Bank	Katie Walters iHeart Media
Damon V. Allen Federal Home Loan Bank of Cincinnati	Shannon O'Connell Egan Dinsmore & Shohl	Christopher Owens Taylor Oswald	Maida Session Duke Energy	Ingrid Washington Gateway Community & Technical College
Christy Alwell Pivot Realty Group	Mark Exterkamp First Financial Bank	Leyla Pena Cincinnati Public Schools	Madison Smith Fifth Third Bank	Jason Wessel Encompass Health Cincinnati
Jennifer Barnes Al Neyer	David Fleischer Alpha+Beta Strategies	Laura Pleiman Boone County Fiscal Court	Tom Stoll Union Savings Bank	Caroline K. Weltzer Viox & Viox, Inc.

Brighton Properties, Inc., Board of Directors 2023-2024

Caroline K. Weltzer, Chair Viox & Viox, Inc.	Ken Muth, Secretary Duke Energy	Stephanie Bogenschutz St. Elizabeth Healthcare	Dawn Grace Federal Home Loan Bank of Cincinnati
Brian Crecco, Vice Chair Capital Construction Services	Robert Arnold Thomas More University	Anthony Bradford A.M. Titan Properties	Susan McDonald Retired, St. Elizabeth Healthcare
Julie Schoepf, Treasurer Dinsmore & Shohl LLP	Aaron Anderson GBBN Architects, Inc.	Kristie Dierig Ever Spark, LLC	Cheri Padgett Fifth Third Bank

Brighton Center Directory

Administrative Offices

President & CEO: Wonda Winkler
Chief Financial & Administrative Officer: June Miller
Senior Vice President: Melissa Hall Sommer
Vice President: Ellen Bates
Senior Director: Lauren Copeland
Human Resources Director: Mary Decker
Evaluation & Data Administrator: Cassie Hitch
Director of Facilities & Property Management: Tony Herms
Housing Development Director: Stephanie Stiene

Find us on social media



Community Resource Center

Director: Eric Owsley
799 Ann Street
Newport, KY 41071

Family and Child Development

Director: Dellisa Ford-Edwards
Bright Days Child Development Center
7th & Park Ave.
Newport, KY 41071
Northern Kentucky Scholar House
402 W. 6th Street
Newport, KY 41071

Housing and Family Well-Being

Director: Jenny Wiley
799 Ann Street
Newport, KY 41071

Parenting Services

Director: Jessica Schierling
799 Ann Street
Newport, KY 41071

Kentucky Career Center

Director of Operations: Lauren Allhands
Director: Douglas Beard
1324 Madison Avenue
Covington, KY 41011

Workforce Development

Director: Jonika Greene
Center for Employment Training
601 Washington Avenue, Suite 140
Newport, KY 41071

Recovery Services

Director: Anita Prater / Janie Hamilton
375 Weaver Road
Florence, KY 41042
Phone: (859) 282-9390

Youth Services

Director: Kate Kassiss
13 E. 20th Street
Covington, KY 41014
Phone: (859) 581-1111



741 Central Avenue
P.O. Box 325
Newport, KY 41072-0325
Phone: (859) 491-8303
Fax: (859) 491-8702
www.brightoncenter.com



Brighton Center is an equal opportunity employer and service provider offering advancement to all qualified persons regardless of race, color, religion, gender, age, sexual orientation, ethnic or national origin, or disability.