



# ANNUAL IMPACT REPORT

July 1, 2021 - June 30, 2022

## OUR COMPREHENSIVE SERVICE CONTINUUM

**TOGETHER**, through our community of support, we partner with individuals and families to help them reach financial stability and independence. During our last fiscal year, we impacted the lives of **28,314** individuals, from infants to older adults, across all **8** counties of Northern Kentucky and beyond. Knowing that the challenges families and communities face are often complex and that making positive change requires long-term holistic and comprehensive services, Brighton Center provides a true community of support through **8 areas of impact** and our **48 programs**.



FAMILY WELL-BEING



EARLY CHILDHOOD EDUCATION



YOUTH SERVICES



HOUSING & FINANCIAL WELLNESS



COMMUNITY RESOURCE CENTER



WORKFORCE DEVELOPMENT



KENTUCKY CAREER CENTER



RECOVERY SERVICES

## OUR MISSION

is to create opportunities for individuals and families to reach self-sufficiency through family support services, education, employment, and leadership.

## OUR VISION

is to be an innovative leader that strengthens the vitality of the community and engages people as they work and live to achieve their hopes and dreams.

## A CONTINUUM FOR ALL AGES



Prenatal



Infants



Children



Young Adults



Adults & Families

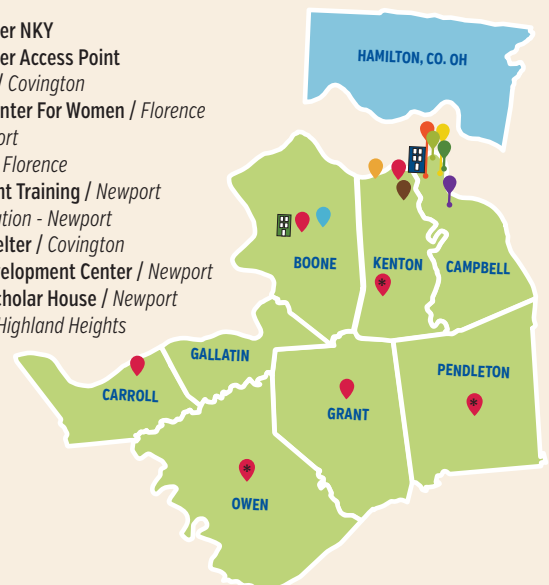


Older Adults



## GEOGRAPHIC FOOTPRINT

- Kentucky Career Center NKY
- Kentucky Career Center Access Point
- Thrifting on Eastern / Covington
- Brighton Recovery Center For Women / Florence
- Family Center / Newport
- Shelby Street Office / Florence
- Center for Employment Training / Newport
- West End / Administration - Newport
- Homeward Bound Shelter / Covington
- Bright Days Child Development Center / Newport
- Northern Kentucky Scholar House / Newport
- Opportunity House / Highland Heights





# TOGETHER, WE TRANSFORM LIVES AND ASPIRE TO THE FUTURE!

Brighton Center is a place where **TOGETHER**, we can accomplish transformational change in the lives of families and the community. **TOGETHER**, we create a spark that ignites people's passions and beliefs in themselves which is foundational to their success, financial stability, and independence.

Over the past year, while concurrently focused on the impact of existing services, we conducted and completed a comprehensive Community Assessment by listening to the voices of those we serve and our partners and supporters about their hopes and dreams for the future. These voices, and the ideas generated, inspired our new four-year Strategic Plan.

As we look to the future, we know that our region's issues are complex, and no one alone can solve them. But **TOGETHER**, we are stronger. For that reason, we will seek key strategic partnerships that are mission and value aligned to address these multi-faceted needs. And **TOGETHER**, we will focus on system change and a public policy agenda that is informed by and accountable to our customers.

We will build services and strategies into our core programs that significantly improve the outcomes for those we serve. This will be the case for housing, workforce development, digital access and literacy, and early childhood and youth development. All the while, we will need to work **TOGETHER** with you, our talented staff, and dedicated volunteers to ensure we have the capacity and enduring culture to meet the growing needs.

For 56 years now, it has been our commitment to being responsive to the community, along with our high standards of quality and accountability with our work, dedication to innovation and leadership, and a focus on the whole family, that have made Brighton Center one of the most trusted and respected nonprofit organizations in the region...and a driving force with best practices nationally.

We are proud to share our impact over this past year in the following pages. As you will see, **TOGETHER**, we have helped families achieve self-sufficiency, achieve their full potential, and have the best quality of life possible.



WONDA WINKLER  
PRESIDENT & CEO



DAN GRONECK  
BOARD CHAIR



## BRIGHTON CENTER & BRIGHTON PROPERTIES DIRECTORS



This group of dedicated Department Directors are experts in their field and are the driving force behind each of our new Strategic Plan goals. As we have for the last 56 years, we are constantly evolving to meet our community's needs, enabling us to continue forward as we partner with families to transform lives.



Lauren Allhands  
Director of Kentucky  
Career Center Operations



Ellen Bates  
Housing & Financial  
Wellness Director



Douglas Beard  
Workforce Innovation  
Director



Dellisa Ford-Edwards  
Early Childhood  
Education Director



Jonika Greene  
Workforce Development  
Director



Kate Kassis  
Youth Services Director



Eric Owsley  
Community Resource  
Center Director



Anita Prater  
Recovery Services  
Director



Jenny Wiley  
Family Well-Being  
Director



Tony Herms  
Director of Facilities &  
Property Management



Stephanie Stiene  
Housing Development  
Director

8  
AREAS OF  
IMPACT

48  
PROGRAMS

56  
YEAR HISTORY  
(FOUNDED IN  
1966)

28,314  
LIVES IMPACTED



## TOGETHER, we provide a holistic continuum of services and comprehensive approach that gets results.

Our secret to success in working with families is not only “what” services we provide, but “how” we provide them! Rooted in our core values and guided by our mission, we strive to create an empowering, judgment free atmosphere for individuals and families to create a path toward economic prosperity.

*Achieving and maintaining self-sufficiency takes a whole family approach and the journey is not always direct. These ideas and our commitment to integrated/bundled services, guide our work in helping families and communities build connections, skills, and a future.*



## BUNDLING SERVICES & A WHOLE FAMILY APPROACH

We know that for families, all things are interconnected – the success of a child is interdependent on the success of their parent(s) or care giver; the parents’ success is interdependent on the support of their family, friends, and community. Offering holistic services to parents and children not only reinforces impact, but also accelerates it as both children and their parents build a solid foundation for the future. We strive to advance integration and bundling of 48 distinct programs in a seamless way for families so that there is no wrong door to receiving services. To do this, we bring to life our values, working in partnership with families to build on their strengths, recognizing that they know their situation best, and that they are capable of making decisions that impact their lives.



# TOGETHER

we create a  
comprehensive strategy  
that guides us into  
the future.

Brighton Center is a community-based organization and has maintained a connection to the community since our founding in 1966. Brighton Center's direction and growth is determined by the community. In 1968, Catherine Spaulding College recommended conducting a Community Assessment to drive future activities of the organization. Since then, every four years, we ask the individuals and families we serve, key stakeholders, and community leaders what their hopes and dreams are for themselves, their children, and the community. That information, in addition to regional and national data, helps us determine our long-term direction. The most recent Community Assessment resulted in four key areas: Core, Capacity, Culture, and Community, which will guide our strategic goals over the next four years.

## STRATEGIC PLAN 2022-2026

### CORE



Build services and strategies into our core programs that significantly improve the outcomes for the customers we serve.



HOUSING



WORKFORCE  
DEVELOPMENT



DIGITAL ACCESS  
& LITERACY



EARLY CHILDHOOD &  
YOUTH DEVELOPMENT

### CAPACITY



To build an organizational infrastructure that supports growth, leadership at all levels, high-performing teams, and customers as they achieve their hopes and dreams.



EMPLOYER  
OF CHOICE



VOLUNTEERS



COMMUNICATION



TECHNOLOGY



RESEARCH &  
INTELLECTUAL  
PROPERTY

### CULTURE



We strive to create a diverse, inclusive, equitable, and anti-racist organization that actively identifies and opposes racism. Ownership, leadership, and investment are expected and set the standards for our core values in action.



CUSTOMER  
VOICE



APPROACH



LEADERSHIP &  
SUCCESSION



RACIAL EQUITY

### COMMUNITY



We are engaged in the community and provide vision, leadership, and innovation to advance strategies that lead to equitable and thriving communities.



STRATEGIC  
PARTNERSHIPS



SYSTEMS  
CHANGE



PUBLIC POLICY



NEWPORT

## KEY COMMUNITY ASSESSMENT DETAILS



**603**  
customers  
surveyed



**60%**  
of respondents  
were ages 25-49



**20%**  
of respondents  
own their homes



**51%**  
of respondents  
rent their homes



### Respondents' Top Long-Term Goals

1. Owning a Home
2. Advancing in a Career
3. Eliminating Debt and Improving Credit



### Key Partnership Areas Indicated by Respondents to Achieve Their Hopes and Dreams

1. Connection to Resources
2. Help With Budget and Income Management
3. Quality, Affordable Housing
4. Education and Training

# TOGETHER, WE MADE THIS POSSIBLE



Brighton Properties oversaw **307** units of, safe, high-quality housing that is affordable, developed **16** new units at Opportunity House, and served more than **560** individuals.



Two major **federal grants** were secured from the Administration for Children and Families, allowing Brighton Center to focus on research, and systems change in the child welfare system.

Brighton Center was recognized by the Nonprofit Times as **Top 50 Best Nonprofits to Work For** in the nation and the Cincinnati Business Courier as a 2022 **Best Place to Work**.



Center for Employment Training celebrated **25 years** of providing debt-free, life changing career training. Over **1,165** individuals have completed the program resulting in gainful employment.



Brighton Center and Brighton Properties completed a **Community Assessment** process and implemented new four-year **Strategic Plans**.



**CENTER TABLE, Catering with a Purpose** had a record-breaking year, catering **257** events, including business lunches, weddings, trade shows, and holiday parties.

Our **AmeriCorps Seniors Program** received grants to focus on the recruitment of diverse volunteers, and to provide support through volunteers to help mitigate learning loss caused by COVID disruptions at Newport Schools.



Center for Employment Training added a **Human Resources and Payroll Specialist** skill division to address the workforce gap in certified Human Resources and Payroll Specialists.





# TOGETHER

we make a meaningful difference in our community.

Volunteers play a critical role in supporting our mission and increasing our capacity to help families achieve their hopes and dreams. Volunteers of all ages and group sizes work together with staff throughout the organization assisting with daily operations, working with customers, and providing additional support utilizing specialized skills. Every hour a volunteer gives equates to a \$24.14 donation, which is incredible. Every victory the families we serve accomplish is aided by our volunteers' compassion and commitment. Through our work together, a difference is made.

## VOLUNTEERS SUPPORT OUR AGENCY BY PROVIDING:

- critical supports to families who are experiencing food insecurity.
- experiences to youth to build leadership and reach their full potential.
- necessary supports in our Early Childhood Education programs to help children reach developmental milestones.
- free tax preparation that puts refunds back into the hands of hardworking families.
- assistance with resumes and conducting mock interviews to individuals seeking employment.
- vital supports to women on their path to recovery.
- administrative support, serving on event committees, or advisory boards.



**1,319**

volunteers provided additional capacity to programs, staff, and customers



**14,590**

volunteer hours which equals the time of 7 full-time staff members



**51**

volunteer groups gave their time across the agency



**223**

AmeriCorps Seniors gave a total of **28,122** hours at **22** volunteer stations across Northern Kentucky



We would love for you to join our volunteer team. We offer volunteer opportunities for groups of all sizes and individuals of all ages. From corporate groups to community organizations, individuals, school groups, and everything in between, our wide array of volunteer opportunities allow you to work alongside staff and make an impact. Interested in volunteering? You can attend an upcoming information session by visiting [brightoncenter.com/volunteer](http://brightoncenter.com/volunteer).



# TOGETHER

we partner with families to ensure  
our community has the resources and  
systems in place to **SUPPORT CHILDREN.**

We partner with families and other providers to assist with family support services, family stabilization services, and child and parenting development programs. Family Well-Being programs are designed to work with families, assisting them in identifying and achieving their hopes and dreams related to economic self-sufficiency and family and community matters that are important to them. Family Well-Being works in collaboration with regional safety net partners, early childhood education organizations, and parenting programs to provide optimal services to the community.



**246**

families participated in  
Every Child Succeeds (ECS)



**2,179**

virtual home visits were  
conducted by ECS Home  
Visitors



**90%**

of children enrolled in ECS for  
one year were assessed  
age-appropriate in cognitive  
and language skills



**161**

children and their parent/  
guardian participated in Home  
Instruction for Parents of  
Preschool Youngsters (HIPPY)



**740**

home visits were  
conducted by  
HIPPY Home Visitors



**92%**

of children enrolled in HIPPY  
for one year were assessed  
age-appropriate in cognitive  
and language skills

## EVERY CHILD SUCCEEDS (ECS)

ECS provides in-home parenting education and support for new moms, dads, and babies in Campbell, Boone, Grant, and Kenton Counties. Home Visitors meet with families weekly and focus on healthy pregnancy outcomes, optimizing child development, and growing strong families. Through hands-on activities, curriculum discussion, family/child groups, and a strength-based approach, families can increase the emotional bond between parent and child, build parental confidence, and enhance family self-sufficiency.

## HOME INSTRUCTION FOR PARENTS OF PRESCHOOL YOUNGSTERS (HIPPY)

HIPPY provides home visitation services for Boone, Campbell, and Kenton County families with children ages 2-5 that focus on helping parents prepare their preschool children for success in school. Home Visitors help parents mingle learning and play as a part of the curriculum.

## COMMUNITY WELL-BEING

A five-year Demonstration grant from the Health and Human Services' Administration for Children and Families for the Community Well-Being project works with key partners to develop a comprehensive community, child, and family well-being system. At the systems level, parents and youth are engaged as partners to understand their journey better, define well-being, enhance communication efforts (including technology), and provide robust training for both the community and system partners. Families also receive concrete resources and direct services from the primary prevention system to meet their needs.

## SAFETY NET ALLIANCE OF NORTHERN KENTUCKY

Safety Net Alliance of Northern Kentucky was established to increase the efficiency and effectiveness of safety net services provided to Northern Kentucky residents in need. This collaborative of over 150 partners includes large and small nonprofits, faith-based organizations, public agencies, educational institutions, and funders.



### DID YOU KNOW?

Early childhood, particularly the first five years of life, impacts long-term social, cognitive, emotional, and physical development. Healthy development in early childhood helps prepare children for the educational experiences of kindergarten and beyond. Early childhood development and education opportunities are affected by various environmental and social factors, including early life stress, socioeconomic status, relationships with parents and caregivers, and access to early education programs.

Source: Health.Gov/Healthy People 2030





## FLORA'S JOURNEY

I learned about Brighton Center after being referred to Every Child Succeeds through St. Elizabeth Physicians after expressing my desire to learn more about my child's development.

Once enrolled, I started meeting with a Home Visitor virtually due to the pandemic. When it was safe, I was able to start meeting with my Home Visitor in my home. I love engaging with the curriculum topics such as supporting communication development, reaching milestones, and building connections. I enjoy completing the parent-child activity with my daughter.

I hope to be the best parent possible for my daughter. Through my participation in Every Child Succeeds, I have received diapers, wipes, monthly books, childproofing items, and support

in all the challenges of being a parent. I have always enjoyed the medical field, and after adjusting to parenthood, I completed my Certified Nursing Assistant license. After expressing my desire to continue my education, I was referred to Brighton Center's Center for Employment Training for the Medical Assisting program. I proudly completed the program with a job at my externship placement and officially graduated. I also participated in financial coaching, working with a certified Financial Coach to work on money management, paying my bills, and building my credit. I am working toward buying a car and, eventually, a home.

My daughter and I proudly graduated from Every Child Succeeds after two years of building a solid attachment with one another. With determination, I am looking to what the future holds, knowing Brighton Center is here to continue cheering me on.



Dear Brighton Center,

Home Instruction for Parents of Preschool Youngsters (HIPPY) was life-changing for my family. When I enrolled my son into HIPPY, I was concerned about what he knew and how we would make sure he was ready for kindergarten. We enrolled him when he was three years old and continued with HIPPY until the spring before he entered kindergarten. I remember my Home Visitor talking to me about what kindergarten enrollment looked like and how to prepare my son, and myself, for that night. He was a champion.

I, on the other hand, was a ball full of nerves and cried most of the evening. How could my baby be ready for kindergarten? However, as I watched him interact with his new teacher and what would become his friends, I knew that he was prepared for this next step. Our Home Visitor ensured we had all the tools needed to make this transition successful. He entered kindergarten confident and ready to learn. The foundation that HIPPY built with my family is lifelong and will not crumble. During

the first parent-teacher conference, his teacher shared his Brigance score with us and told us she was impressed with what he knew. She said, "He was more than ready to enter my classroom." This made me so proud as a mother! I never had a good relationship with school and often dreaded learning, but I knew I wanted to change that for my son.

He is now in second grade and reading at a fifth grade level. He also attends math with the third grade class and loves school. He never complains that he must go to school, he enjoys school, and he enjoys learning. I strongly believe that none of this would be possible without our relationship with HIPPY. HIPPY encouraged me to advocate for my child, to make sure he had a foundation for learning, and gave me the ability to be his first teacher. I often say I am proud of him, but then he smiles at me and tells me he is proud of me! Thank you, HIPPY, for everything you brought my family!

**- GRATEFUL HIPPY FAMILY**



# TOGETHER

we ensure quality **EARLY CHILDHOOD EDUCATION** is the foundation for life-long success and a **2-GEN APPROACH** changes the trajectory for generations to come.

Every child deserves access to high-quality educational experiences that ensure they are on track for success in school. However, many families struggle to afford quality care. We support children in reaching important developmental milestones from birth through the start of kindergarten and beyond. To do this, we create a partnership with parents to provide the support they need in being their child's first and most important teacher. Together, children and their parents are able to focus on life-long learning.



91

children attended Bright Days Child Development Center



53

children attended Early Scholars Child Development Center



100%

of children who attended our Child Development Centers for at least 12 months met cognitive and language skill expectations



57

parents were served residually at Northern Kentucky Scholar House



41

parents made progress toward achieving self-sufficiency



54

parents made measurable progress toward a degree or training program

## NORTHERN KENTUCKY SCHOLAR HOUSE

Northern Kentucky Scholar House is part of a comprehensive statewide, two-generation self-sufficiency program that provides affordable housing, child development services, and case management support. Priority is given to single-parent families as they pursue a degree in higher education. Northern Kentucky Scholar House is a partnership between Brighton Center and Neighborhood Foundations. The 48 apartments and Early Scholars Child Development Center are located in the West Side of Newport, KY. Early Scholars Child Development Center's convenient on-site location eliminates many barriers parents often face in getting their children and themselves to school. Monthly workshops are also offered based on topics suggested by residents. Resident voice is also gathered through a resident council, which fosters a sense of community among parents.

## BRIGHT DAYS AND EARLY SCHOLARS CHILD DEVELOPMENT CENTERS

Bright Days, located in the historic East Side neighborhood of Newport, is a nationally accredited, 4 STAR Rated quality child care center. Early Scholars Child Development Center, located in the West Side neighborhood of Newport on-site at Northern Kentucky Scholar House, is a 5 Star Rated quality child development center. At both Bright Days and Early Scholars children receive individualized classroom instruction to prepare them for success in school. Emphasis is on the quality of interactions among staff and children. The Centers utilize developmentally appropriate, research-based curriculum, high standards of health and safety practices, highly qualified staff, and provide an enriching learning and physical environment with nutritious meals, individualized classroom instruction, and parent involvement activities.



### DID YOU KNOW?

Early childhood programs are a critical outlet for fostering the mental and physical development of young children. High-quality early childhood programs can increase earning potential and encourage and support educational attainment. Early childhood development and education programs can also help reduce educational gaps. The developmental and educational opportunities that children have access to in their early years have a lasting impact on their health as adults.

Source: Health.Gov/Healthy People 2030





## AMANDA'S JOURNEY

They say kids will change your life, but that's not usually through a flier in a backpack! When we came to Northern Kentucky, we were struggling. My son connected with Brighton Center's Youth Leadership Development through his school. He came home from one of their meetings with a paper in his backpack about all of the other services we could receive at Brighton Center. At first, I resisted. Admitting you need help is so hard. But the Youth Leadership Development Facilitator reassured me that their programs weren't there to "help" me, they were there to offer me a different life. If it had just been for me, I might have still resisted, but they offered programs for everyone in my family, separately and together. The biggest change I had to make was to stop thinking of getting through just today and to start thinking of what I wanted for the future.

I moved into Northern Kentucky Scholar House in 2019 and enrolled at Gateway & Community Technical College as a part of the Gateway to Northern Kentucky University program. With my youngest child in Brighton Center's Early Scholars Child Development Center on-site at Northern Kentucky Scholar House and my two older children in school and Youth Leadership Development, I had the time to focus on my education. I had never imagined myself going to college - my parents didn't go to college, it was never the path set out before me like it is in other families, and I had no idea what to expect. So I did what was starting to come easier to me, and I connected with helpful resources at the colleges. Now with my associate's degree achieved, and one semester left toward my bachelor's degree, I am looking forward to pursuing a career in public relations and marketing. I never imagined that this was possible.

Through the years that I have been involved with Brighton Center, I have been working on my finances the whole time. The financial coaching that is a part of the process has made such a difference. I went from a financial situation I was not proud of to now sharing budgeting tips with everyone I meet. I was able to completely pay off my credit

card debt and improve my credit score enough to start planning to buy my own home by attending the Home Buyer's Club.

One of the things I like the most about my new life is that I can participate in things now. When my life was all about struggling to pay the bills, I didn't have the time or energy to get involved. But now, I love to give back to the causes that are important to me. I've gotten involved with the Resident Council at Northern Kentucky Scholar House to help shape and guide the community where I live, I've worked with the Northern Kentucky Pride Institute to help foster acceptance, and I've given tips on where to find resources to anyone who may need them (my biggest tip: start at Brighton Center!).

My older kids will be ready to start thinking about college soon, and as a first-generation college graduate, I will become one of those parents who can guide her kids through the college process. I'm teaching them how to budget now so that it becomes a habit for them. More than anything else, Brighton Center has given me a set of tools to navigate a life that I can teach others how to use, too. My kids have gained so many social skills and self-confidence through Youth Leadership Development that it has increased their ability to advocate for themselves. Realistically, life is going to throw a few challenges their way, but having the tools to face those challenges and having people who are ready to help you stand up to those challenges - that's what success looks like.

The people at Brighton Center like to talk about hopes and dreams; when I first met with them, I didn't have much of either. But now, I'm figuring out the next steps for my exciting new career; raising stable, confident children; and dreaming of a cozy home where the four of us will have a little room to spread out, a little garden to tend, and the time and energy to express my artistic side. All because of a flier in a backpack!



# TOGETHER

we support **YOUTH** as they transition to adulthood through positive youth development, skill building, and leadership that helps them succeed in school and life.

Programs and services for youth aim to ensure they have a positive outlet for growth, safety nets during a crisis or hard times, and a support system to navigate into adulthood. We empower youth to have their voice heard and encourage them to envision what they want for their future while creating a plan to achieve it. With support, youth are able to explore educational opportunities, discover career paths, build life skills, and create a stable foundation for the future.



145

safe place locations in NKY for youth in need



181

youth received crisis intervention services



37

youth received emergency care at Homeward Bound Shelter



34

runaway and homeless youth received intensive case management



148

youth participated in Youth Leadership Development (YLD)



82%

of youth in YLD demonstrated social and emotional skills necessary for success

## YOUTH STREET OUTREACH

Youth Street Outreach provides street-based services to runaway, homeless, and street youth who have been subjected to or are at-risk of being subjected to abuse, sexual exploitation, and severe forms of trafficking. This includes outreach, prevention, individualized assessment, service linkages, case planning, and follow-up for youth.

## HOMEWARD BOUND SHELTER

Homeward Bound Shelter is a 24-hour emergency shelter located in Covington, KY that provides a safe environment and residential treatment services for runaway, homeless, abused, neglected, and dependent youth ages 11-17. Homeward Bound Shelter is the only direct access emergency shelter for youth under 18 in Northern Kentucky.

## INDEPENDENT LIVING

Independent Living provides comprehensive transitional living services to assist older youth in the state's foster care system in making a successful transition to self-sufficiency by providing housing along with comprehensive integrated services for youth.

## YOUTH LEADERSHIP DEVELOPMENT (YLD)

YLD is an after-school program for middle school youth ages 11-15 to build leadership skills and conduct community service projects. For high school youth, Teen Coalition is geared toward youth who enter high school and is offered in Newport. Teen Coalition combines service learning, community engagement, and career and college exploration for youth in high school.

## SAFE PLACE

Safe Place is an outreach program run by Homeward Bound Shelter. There are 145 sites within the community with trained volunteers. Youth accessing these locations are connected immediately to safe and supportive services.

## OPPORTUNITY HOUSE

Opportunity House is an innovative program that provides a supportive environment for young adults to reach their education and career goals. Through access to post-secondary education opportunities, stable housing, and wraparound services, young adults 18-24 are empowered to achieve educational success, employment, and self-sufficiency.



**DID YOU KNOW?**

Over the course of the 2022 school year, 21,062 students in Kentucky experienced homelessness. Over 6,000 Northern Kentucky opportunity youth (young adults aged 16-24) aren't working or in school. Studies show that youth who miss out on an early work experience are more likely to endure later unemployment and less likely to achieve higher levels of career attainment. After-school programs can support social, emotional, cognitive, and academic development, reduce risky behaviors, promote physical health, and provide a safe and supportive environment for children and youth.

Source: Youth.Gov/The Annie E. Casey Foundation



## CHAEI'S JOURNEY



My life has changed in so many aspects since becoming a part of Brighton Center. I have overcome many obstacles in just a short time since moving into Opportunity House. Through Brighton Center's services, I have learned new skills, including time management, money management, financial skills, positive mental health, and social skills.

Brighton Center has helped me find who I am as a person. Coming out of my shell was a big battle I had when I first moved into Opportunity House. Finding a place where I could fit in with other people who could relate to me was an important missing piece I needed, and Brighton Center provided me with just that. Having something to lean on was also important to me, and Brighton Center has always been there for individuals in times of need.

One thing that makes Brighton Center unique is their passion for helping and guiding young aspiring adults with their journey to the real world. I have never encountered a group of people with a bigger drive than Brighton Center when it comes to being a backbone to teens finding their way and making something of themselves. I learned

a lot of things about myself while being part of Brighton Center's community. I learned that it is okay to ask for help when needed and not to be ashamed of needing assistance. I learned that I am extremely outgoing and have particularly good social skills. My hopes include becoming a well-rounded advocate of Logistics and acquiring a Supply Chain Specialist position. I hope to be the first college graduate in my family. Brighton Center is truly an organization that specializes in helping people who know they want to create an image for themselves, but do not have the resources to do so.

## KARLY'S JOURNEY



I was connected to Brighton Center's Street Outreach team through a presentation at my high school. My home life was not stable or a good environment to be in. I was trying to finish high school with many obstacles that most kids did not have. I had a lot of health issues and worries about basic survival needs that didn't allow me to immerse myself in my education like I wished I could have.

Brighton Center became the support I was not getting at home. They set up health appointments for me, and I was finally able to get dental work done. They helped me with food through the Food Pantry and connected me to therapy through the on-site Counselor at Homeward Bound Shelter. They also helped me with the whole process of getting into college. No one in my family has ever gone to college, so we didn't know about the process. The Street Outreach Specialist came to my school weekly to walk me through the process of applying and helping me get to my chosen college in Iowa. I received assistance with college applications, figuring out the travel logistics, getting my health insurance switched over, and setting me up with food. She even

surprised me by coming to my graduation – she was the first person I saw when I left my graduation, and it was really really nice.

I started college in August of 2022, and I really love it. The Maharishi International University is unique and has people from all over the world, so I'm getting to study and get diversity from all of these different cultures. I've already made a lot of friends. I have a part-time job in an assisted living facility, and I'm studying anatomy and physiology. It's very difficult but very rewarding. I'll be here for about three years to get my bachelor's degree, and then I plan to attend graduate school. Someday I hope to be a Doctor of Naturopathy so I can help as many people in the world as I can.

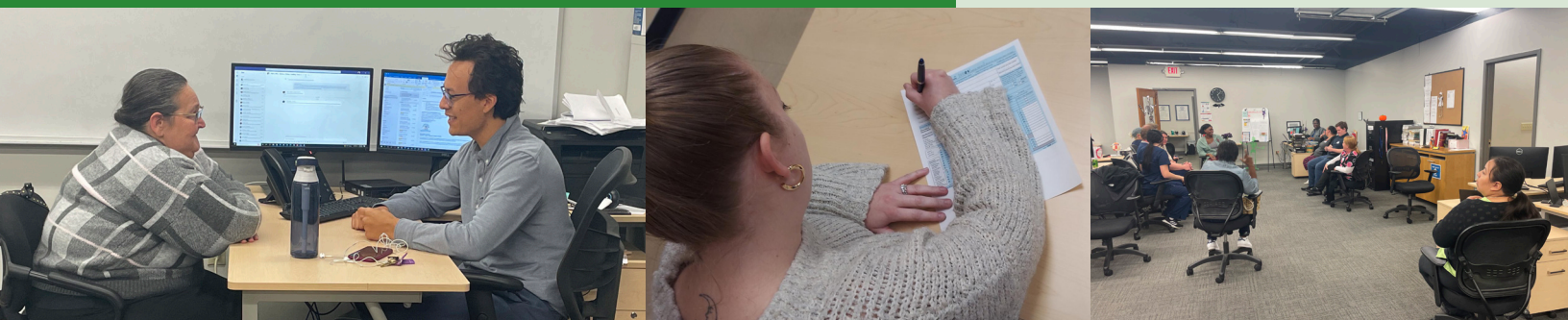
Brighton Center went above and beyond to make sure I was taken care of in ways I did not even know. I didn't even realize it then, but the gifts I got at Christmas when I was little came from Brighton Center. They helped me improve my quality of life so I can live out my dreams instead of worrying about my survival. I am very proud that throughout my life, I've had many troubles and tribulations, but I never let any of them define who I was or how far I would go.



# TOGETHER

we help families gain **HOUSING** that is affordable, achieve **ECONOMIC STABILITY**, and **BUILD ASSETS** for the future, which makes our community a thriving place.

Helping families achieve economic stability, obtain housing that is affordable, and build assets for the future makes our community a thriving place. The path to financial stability often starts with stable housing, an education, a career, and managing finances. Too often the reality is that an unexpected curve on that path can send a family into a downward spiral very quickly. We work with families based on their goals for the future. Those we serve learn to take charge of their hard-earned money by making informed decisions and planning for the future with the support of Certified Financial Coaches who guide them through the process of achieving financial security.



**265**

families participated in intensive case management services to work toward a plan for achieving self-sufficiency



**158**

individuals participated in financial education workshops



**32**

individuals participated in homeownership education workshops



**597**

individuals received free tax preparation services



**\$1,171,053**

in total combined tax refunds processed through free tax preparation services



**37**

individuals became a homeowner

## STABLE FAMILIES

Stable Families is an 18-24 month intensive program that serves families with children in grades K-3 who are at imminent risk of homelessness to stabilize their housing situation. The goal is for parents to maintain housing while children maintain school stability.

## RAPID REHOUSING

Rapid ReHousing is a 12 month program that works with individuals experiencing homelessness to connect them with quality, affordable housing, and wraparound support services including case management.

## FINANCIAL EDUCATION & COACHING

Financial Education occurs through free workshops covering budgeting, banking, how credit works, credit reviews, and preparing for major purchases. During one-on-one coaching sessions, individuals develop a personal budget, learn money management techniques, run a credit evaluation, and receive help to establish checking or savings accounts.

## HOMEOWNERSHIP EDUCATION & COACHING

Homeownership workshops cover each step of the home buying process from budgeting to closing. One-on-one sessions help home buyers develop an action plan outlining the steps necessary to reach their goal of homeownership. Follow-up counseling is also provided to home buyers.

## FORECLOSURE PREVENTION

Foreclosure Prevention assistance is provided to support homeowners in navigating the foreclosure process by intervening with lenders and attorneys, and applying for any available assistance to mitigate housing disruptions.

## ASSET BUILDING TOOLS

Asset building tools and resources are available to individuals interested in building credit.

## VOLUNTEER INCOME TAX ASSISTANCE (VITA)

VITA is a free tax assistance program that is offered every Saturday from the end of January to the middle of April. Individuals can have their taxes completed for free and filed electronically by IRS certified volunteers.



**DID YOU KNOW?**

Households are considered to be cost-burdened if they spend more than 30 percent of their income on housing and severely cost burdened if they spend more than 50 percent of their income on housing. Cost-burdened households have little left over each month to spend on other necessities such as food, clothing, utilities, and health care.





## KELLY'S JOURNEY

The one thing I would say to other people about Brighton Center is to have hope. Try it. If your life was as hectic and chaotic as my life was prior to incarceration and living a life in recovery, then I know how you feel.

The very first thing that brought me to Brighton Center was the need for food because my kids were coming over for the weekend while I was working toward getting them back in my life. I was working a job with very little pay and needed extra support.

One day I came across a brochure about getting help purchasing a home. I didn't think it was even a remote possibility for me. Things like that don't happen to me, primarily because of all the chaos I've caused in my life.

After having that brochure for a couple of months, I decided to call and sign up for the homeownership workshop. It was so enlightening. I learned so much about buying a house that I had no idea about, and it gave me confidence that this may work for me!

After the workshop, I met with a Financial Coach to learn more about my finances. I started to look for a better-paying job and learned that I would have to be at the same job for at least six months before applying for a home loan. I also began to work on building my credit score. I ensured all my bills were paid early or on time and got a secured credit card to increase my credit score.

One of the many things my Financial Coach helped educate me on was paying off my credit card at the end of the month. Within a year, I went from a credit score of almost

nothing to almost 700. I also went from a job making \$12.50 an hour to \$16.00 an hour, and it was a full-time career. That's when I decided to move forward with getting a loan at the bank. I was pre-approved for a loan after the work I put into building my credit and increasing my earnings. It turned out that my monthly payments would only be slightly higher than my rent each month. I am halfway there to owning my own home.

My biggest accomplishment was doing something everyone told me I couldn't do or wouldn't do, which I started to believe myself. Meeting with Brighton Center made me believe that I could. In the last few years, I have earned custody of all three of my kids. I followed through with the plan I was given by social services, the judge, and my lawyer. I even had a letter to the judge from my Probation Officer recommending I get custody of my kids back.

Many people are in the same position I used to be in. I remember so clearly how I felt, and the poor choices I made that led me down the very dark and lonely road. Even through recovery, I started to doubt if I would ever have a chance of leading the life I dreamt I could. I have turned myself and my life completely around.

Once you set your mind to something you can accomplish your goals. I have custody of my kids, I'm working, I've got good credit, and I am taking steps toward homeownership. There is hope, and it can be done because I am doing it!

My story is not yet finished. I will be a homeowner soon. Thanks to the one brochure...a single piece of paper led me to have so much hope.





# TOGETHER

we provide **BASIC NEEDS** and long-term **HOLISTIC SUPPORT** that helps individuals maintain stability and have the best quality of life possible.

Providing basic needs and long-term holistic support helps families achieve their hopes and dreams. For a family struggling to make ends meet, asking for help is often a last resort after exhausting all of their resources. Staff work in partnership with customers to solve the individual and unique set of challenges that bring each of them through our doors to ensure their basic needs are met and goals for the future are within reach. The Community Resource Center serves as the agency's volunteer and donation hub, providing solutions to build capacity.



**2,529**

families accessed emergency assistance services



**5,643**

individuals received food, diapers, personal care items, or other basic necessities



**284**

families received financial assistance to ensure housing stability and avoid eviction



**109**

families received stabilization services through the Family Support program



**214**

senior residents increased their social supports and received services to allow them to age in place



**2,832**

individuals received holiday assistance including holiday food and gifts for kids

## FAMILY SUPPORT

Family Support is a crisis intervention program intended to help individuals and families with emergency needs. Families receive referrals and linkages to emergency services that enable them to stabilize through case management and supportive wraparound services.

## NEIGHBORHOOD COMMUNITY GARDEN

The Community Garden has 96 raised beds, allowing residents to increase knowledge of ways to grow food and cook nutritious meals.

## THRIFTING ON EASTERN

Thrifting on Eastern is a community thrift store that offers high-quality, gently used household items and clothing at affordable prices. Proceeds benefit Family Support programs.

## SENIOR SUPPORT

Senior Support provides support to older adults at Brighton Properties' Saratoga Place, Two Rivers, and Austinburg Apartments to connect them with services that will allow them to age in place.

## HOLIDAY DRIVE

Through generous donations from local families, churches, and businesses, Brighton Center is able to provide holiday items for customers. Families engaged in Brighton Center programs can participate in Wish Tree to choose gifts for their children. The Used Toy Sale is a long standing Brighton Center tradition, where children ages 2-12 shop for their siblings, friends, or other young family members with the help of an adult volunteer.



**DID YOU KNOW?**

Across the Cincinnati region, more than 270,000 households experience food insecurity. According to a study conducted by researchers from the Cincinnati Children's Hospital, childhood food insecurity has been associated with negative health outcomes, including iron-deficiency anemia, overweight or obese status, increased likelihood of hospitalization or illness, increased risk of developmental delays, and lower physical and psychosocial functioning. In a recent Bankrate survey, 39% of American workers who received a pay raise in the past year said they were struggling to afford basics like groceries and other household goods because their pay hadn't kept up with the pace of inflation.

Source: Health.Gov/Healthy People 2030





## ASIA'S JOURNEY

Despite the obstacles and barriers in my way, I have never given up.

I was living at City Heights when residents were informed we would need to move out. Brighton Center had an office on-site to help the residents with services, so I went there to see if they could help me find a new place to live.

The City Futures team connected me with Brighton Center's Stable Families program, which assisted with securing a new home in Latonia. It turned out to be a better fit than the apartment we had to move from. It was three bedrooms instead of two, and the area was safer for my kids.

I was also connected to Brighton Center's Center for Employment Training, where I could complete my GED and train for a job. I was interested in the Medical Assisting skill division because I was inspired to work in medicine after my middle daughter spent months in the NICU after she was born.

Staff helped make sure I could pay my bills through rental assistance, and they helped enroll my younger kids in Brighton Center's Bright Days Child Development Center, which is almost right around the corner from Center for Employment Training. This support allowed me to continue focusing on completing the Medical Assisting coursework.

Brighton Center got me started on driving classes so I could get my license, and they connected me with an organization to help me get a car. The car has been a game-changer for my family. It has eliminated many of the transportation barriers I was experiencing. It also has allowed me to continue job training through an externship at St. Elizabeth Physicians and get to and from my new place in Latonia to my kids' schools.

They paid attention to the things that made life harder for my family and me and helped me make them more manageable by connecting me with various services based on my family's needs.

I've been meeting with a Financial Coach at Brighton Center since I started at Center for Employment Training. The Coach connected me to Financial Education workshops, where I learned money management techniques, budgeting, savings, and investing information, along with how to repair and build credit. I also learned what kind of loans are best for me and how to save money for the future.

During my training at Center for Employment Training, I suffered the loss of two of my family members. Trying to keep up with my lessons became too much while trying to keep my family going in the middle of our grief.

At one point, I tried to give up on getting my Medical Assisting certification, but the Family Stability Supervisor came to talk to me about how I should keep going for the good of my family. When, that same Supervisor came to work at Center for Employment Training, I would see her every time I stopped by to work on my resume and job applications. It reminds me that I have the support to keep going.

Now that I have my GED and my Medical Assisting certificate, I want to keep going to school to become a nurse. I want to help babies and families in the NICU just like the nurses helped me when my daughter was born. Brighton Center encouraged me to think about what future I want for myself and helped me figure out a way to get there.



# TOGETHER

we offer **PRE-APPRENTICESHIP** experiences, **JOB TRAINING** in high-demand career sectors, and opportunities for **CAREER ADVANCEMENT** that changes lives.

Gaining employment with a livable wage and benefits that provides career advancement opportunities is often one of the most challenging issues faced by individuals and families working toward self-sufficiency. Workforce Development services focus on providing access to debt-free training and helping people obtain credentials in demand industry sectors offering a career pathway.



**170**

Individuals received career training through Center for Employment Training (CET)



**\$23,624**

average wage gain for those who complete CET and gain employment



**72%**

of CET graduates maintained employment for 12 months



**18**

individuals were served through the Campbell County Detention Center Chemical Dependency Program



**146**

residents of City Heights connected to workforce services through City Futures



**29**

individuals completed Trades to Success

## CENTER FOR EMPLOYMENT TRAINING (CET)

CET offers adults life-changing skills to help them find good jobs with a livable wage and build a successful future. Instruction is hands-on, practical, and personal, designed to get people working as quickly as possible to begin their path to a promising future. CET is accredited by the Council on Occupational Education and provides competency-based skill specific training in Medical Assisting, Health Technology Administration, and Human Resources and Payroll Specialist.

## TRADES TO SUCCESS

Trades to Success is a 3-week pre-apprenticeship program created to help customers find a trade career they love. Participants explore trade and apprenticeship careers, job training, and post-secondary education opportunities. Participants explore careers and industries such as: electrician, line worker, construction, Commercial Driver's License, supply chain and logistics, and many more.

## CAMPBELL COUNTY DETENTION CENTER CHEMICAL DEPENDENCY PROGRAM

The Chemical Dependency Program is designed for women who are at the Campbell County Detention Center and uses trauma informed care and gender specific responsive practices during a six month in-patient treatment model while incarcerated. The treatment is followed by 24 months of supportive care and access to resources. A special emphasis is placed on job readiness and employment aligned with our workforce development continuum.

## CITY FUTURES

City Futures is a workforce development program connecting the residents of the City Heights neighborhood in Covington with quality employment services including career coaching, job readiness workshops, job training programs, resume services, and funding for occupational training services in high demand sectors. Participants of City Futures also receive financial coaching and family support services. The program is a partnership between Brighton Center and the Housing Authority of Covington.



**DID YOU KNOW?**

Low-wage jobs can push even full-time workers into poverty, and the real value of the minimum wage is lower today than it was 25 years ago. Of the ten most common occupations in the United States, only two pay a living wage. Workforce development programs designed to help individuals gain the skills and opportunities needed to secure work and family-supporting wages can be transformative. Parents with stable, well-paying jobs have more resources to invest in their children and their lifelong success.

Source: The Annie E. Casey Foundation





## SHANE'S JOURNEY

I came to Brighton Center when I was going through a lot of changes in my life. My mom, who I was the primary caretaker for, had just passed away.

I had to move

out of my home when City Heights closed down, and I didn't know what I was going to do. Through connecting with community resources, I was told me about Brighton Center's Center for Employment Training (CET) and the Medical Assisting program. I already had a lot of familiarity with the medical field from caring for my mom, so I thought it was worth a try. I started the following Tuesday.

Before coming to CET, I was a shy and distant person. Even when I was at school or a job and part of a group, it never felt like we were all in the same place in life. So I never really engaged with other people. Since coming here, I've really opened up. Even though we all started the program at different times, we all share a common goal, and we help each other to reach that goal. I've even joined the Ambassador program, where I help with recruitment and outreach.

In six months, I went from a shy closed-up person to a leader in this community – I think I always had leadership skills, but I was never somewhere that I could discover them. But here at Brighton Center, they take the time to

listen to you and value your input, which really helped build my confidence.

I'm coming close to finishing my time at CET, and even though I really don't want to leave, I'm excited to start my future. I would love to start working at St. Elizabeth Physicians to help people feel better. I hope to get my own car and maybe someday get a condo. I've been working with a Financial Coach here at Brighton Center to help me get on track and stay on track.

I started a part-time job working at Thrifting on Eastern, Brighton Center's thrift store that helps fund their Emergency Assistance services, helping me save a little money while I finish my program. Even after I leave CET, I will keep that job because it is the loveliest place with the most wonderful people. I get to meet so many great new people, which my previously shy self would have hated, but now that I've started making connections, I don't want to stop.

When I used to think about my future, I couldn't really picture anything, just a blank white room that never ended. It worried me because I didn't even know who I was. Now, I'm starting to get the picture of who I am – the colors are coming through and painting that room. It's not fully colored yet, but I'm really excited to see how it's looking already. For anyone who needs help finding the best parts of themselves or the best future, Brighton Center is the best place to start.



Brighton Center's Center for Employment Training (CET) celebrated 25 years of changing lives through training, building skills, and gaining good jobs with a liveable wage, benefits, and opportunities for career advancement. What makes CET so different is the intensive and integrated experience trainees have while attending. In 1996, Wonda Winkler saw an opportunity to offer more than short-term job training to our customers. She found that the U.S. Department of Labor was offering agencies the opportunity to go to San Jose, California to experience firsthand the successful training model of the original Center for Employment Training. Brighton Center received the replication grant and was able to bring the San Jose model back to Newport. In April 1997, Brighton Center's CET opened its doors at Watertown Square to trainees for the first time. In 2001, we were accredited by the Council on Occupational Education, and in 2011, we became licensed by the Kentucky Council on Postsecondary Education.

## JONIKA'S JOURNEY

I started as a trainee at Center for Employment Training (CET) when I didn't feel like I had very many other options. I had a dead-end job, but I didn't want to have a dead-end life. My journey through CET was not always smooth – life changes seldom are – but it was so worthwhile. I gained knowledge, confidence, skills, and an awareness of opportunities that I hadn't imagined could exist for me. A new life and a new career opened up for me, but it wasn't too long before I was called back to Brighton Center. The lure of changing lives like mine had been changed for me was too strong. I began a purpose-driven life working for Brighton Center – which was also not always smooth – and worked my way to become the Workforce Development Director, which means that I now oversee the very program where it all started for me. I am a living, breathing example to everyone who walks through our doors that their futures are full of exciting possibilities. I can speak to them in a language they understand because I have also traveled on bumpy roads. And I have learned that with a team like Brighton Center, all of life's roads are easier to navigate.





# TOGETHER

we connect **JOB SEEKERS** to high-quality jobs and **EMPLOYERS** to talented candidates, creating a strong regional workforce.

The goal is to align employer workforce needs with a skilled and qualified workforce by providing quality employment opportunities and training services. Brighton Center is the operator of the Kentucky Career Center - Northern Kentucky and contracted provider for the Northern Kentucky Workforce Investment Board for the Workforce Innovation and Opportunity Act. We provide direct services through career coaching, engaging with regional employers, and advocating for our job seekers to ensure a better life for themselves and their families.



**2,485**

individuals attended orientations or workshops to learn about career opportunities



**985**

job seekers obtained employment



**97%**

of individuals enrolled in intensive career services maintained employment for six months



**916**

youth attended an orientation or workshop where they learned workplace life skills



**490**

hiring events held through the Kentucky Career Center



**874**

employers utilized services through the Kentucky Career Center

## KENTUCKY CAREER CENTER OPERATOR

The Kentucky Career Center Operator coordinates the delivery of services between partners at Kentucky Career Center locations in Covington, CVG Airport, Florence, Carrollton, and Williamstown. Kentucky Career Center fosters a culture of collaboration and excellent customer service among Career Center partners that promotes the delivery of innovative, high quality workforce development services.

## BUSINESS SERVICES

Business Services assists employers with unique and individual workforce needs. From employee retention support and training programs to talent recruitment and other workforce services, Business Services focuses on connecting qualified employees to employers.

## LIFT UP

Lift Up is a collaborative regional project with St. Elizabeth Healthcare which boasts a No Wrong Door Model that is designed to funnel those receiving treatment into employment opportunities.

## TALENT DEVELOPMENT SERVICES

Talent Development Services prepare job seekers for the demands of the workforce. Individuals have access to career coaching and workshops covering resume writing, job search skills, and networking skills. Job seekers are also connected to job training opportunities through local Workforce Innovation and Opportunity Act funding.

## YOUTH TALENT DEVELOPMENT SERVICES

Youth Talent Development Services prepares youth [16-24] for the demands of the workforce. Individuals receive career coaching, access to workshops, internship opportunities, and funding for job training programs through local Workforce Innovation and Opportunity Act funding. Career coaching covers the technical aspects of job searching and interviewing skills, mock interviews, on-the-job training, perception in the workplace, and applied writing and verbal skills.



### DID YOU KNOW?

At a labor force participation rate of 58 percent, Kentucky ranks 45th in the nation. The good news however is that Northern Kentucky is home to thriving industry sectors with the five largest being advanced manufacturing, construction & trades, healthcare, IT, business & finance, and transportation & logistics. These industry sectors offer employees livable wages, benefits, and opportunities for advancement.

Source: [senate.Gov/Kentucky Career Center - Northern Kentucky](https://senate.Gov/Kentucky-Career-Center-Northern-Kentucky)





## JOEL'S JOURNEY

I began my journey with the Youth Talent Development program in 2018 as a referral from a Kentucky Career Center -Northern Kentucky partner organization, the Office of Vocational Rehabilitation. My brother had a good experience with some of the Career Center programs, and I knew it would provide a good opportunity for me as well.

Over the course of four years, with the help of this program, I was able to build a solid career pathway in Advanced Manufacturing. My Career Coach also helped me decide on a career path in CNC Machining and tool and die work, which is where I focused my education.

I struggled with social situations, especially interviews for employment. A lack of work experience made it difficult to be given a chance with many employers. I worked with a Youth Talent Development Specialist to take a career aptitude assessment and decided that I wanted to pursue a career in Advanced Manufacturing. I began a training program at Gateway Community & Technical College for computerized manufacturing in October of 2018 and completed the program in 2021, obtaining an Associate of Applied Science degree as well as a certification for Machining and Machine Tool Operation.

During my time at Gateway, I connected with Brighton Center's Career Bridge program and worked for Chick-fil-A while taking classes at Gateway. My experience at Chick-fil-A helped me build essential skills for employability

like communication and conflict resolution. The Kentucky Career Center - Northern Kentucky staff helped me get into college, which was something I otherwise would not have been able to navigate on my own.

After successfully completing training, my Youth Talent Development Specialist was able to get me set up in a paid internship opportunity at ABB Optical. I was then hired on with the company full-time in February of 2022.

I am very proud of finishing my associate's degree at Gateway Community & Technical College. The people I met along the way, especially in my internship, make me smile. Through the staff at Kentucky Career Center, I have learned how to face challenges by communicating and persevering. I was empowered to find jobs on my own and was able to be more focused and serious about pursuing employment. I learned how to use job search tools like LinkedIn. I hope to find my dream job in CNC Machining, which is long-term and stable. One day I hope to own a home.

I want to continue working in advancing my career by pursuing additional certifications. Today I am a skilled and educated member of the workforce who has a network of continued support through the relationships I developed through the Kentucky Career Center - Northern Kentucky.



Kentucky Career Center partnering organizations work alongside each other with the common goals of strengthening our local talent pipeline and meeting the workforce needs of businesses. These partnerships include the following organizations: Brighton Center, Ohio Valley Goodwill Industries, EC Learn, Gateway Community & Technical College, Job Corps/Horizon Youth Services, Kenton County Public Library, Kentucky Adult Education Skills U, Kentucky Cabinet for Health and Family Services, Kentucky Education and Labor Cabinet, Kentucky Office of Vocational Rehabilitation, Life Learning Center, Northern Kentucky Area Development District, Northern Kentucky Community Action Commission, Northern Kentucky Workforce Investment Board, Owen County Public Library, Pendleton County Public Library, and TANK.



# TOGETHER

we make **RECOVERY** possible for those struggling with addiction through a holistic long-term approach and peer-driven model.

Recovery Services focuses on helping women gain the skills they need to successfully live a sober life through a long-term, peer-driven support model. The journey starts with a supportive environment that offers an array of holistic services aimed at helping women achieve wellness, economic independence, gain coping skills, and additional life skills that allow them to rebuild their lives as a part of their recovery journey.



**304**

women served residentially through Brighton Recovery Center for Women



**18**

residents became Peer Mentors to other women at Brighton Recovery Center



**24**

women completed all phases of the 9-12 month Recovery Center program



**77**

women completed a job readiness program and learned workplace skills



**101**

women volunteered their time to give back to the community



**Significant Increases in**

quality of life, employment, ability to meet basic needs, recovery supports, and improved mental health

## BRIGHTON RECOVERY CENTER FOR WOMEN (BRC)

BRC is a 100 bed facility located in Boone County that utilizes Recovery Dynamics curriculum and is a peer-driven model of recovery. The program helps women recover from chronic substance use disorder and addiction, and move toward a life of sobriety and productivity. The focus is to help the women change their behavior, skills, and attitudes. BRC takes a long-term, holistic approach to recovery that is comprised of four distinct modules of progression, and is ultimately connected to an array of Brighton Center services. On average, women spend 9-12 months immersed in a supportive environment that holistically allows them to recover from the effects of addiction and rebuild their lives.

## SOBER LIVING

Sober Living provides safe, affordable housing to Brighton Recovery Center and Recovery Kentucky graduates that promotes permanent sobriety upon integration back into the community. The Sober Living program believes housing and employment significantly increase an individual's opportunity to stay clean and sober.

## CENTER TABLE, *CATERING WITH A PURPOSE*

CENTER TABLE is a catering social enterprise that uses fresh, seasonal ingredients to create delicious food for all occasions from backyard barbecues to business lunches and elegant celebrations. Profits from CENTER TABLE support women in recovery. At Brighton Recovery Center, residents learn culinary, catering, and customer service skills that will ultimately lead to career opportunities in the hospitality industry. When you choose CENTER TABLE, you are supporting women in recovery.



### DID YOU KNOW?

Drug addiction is a complex disease, and quitting usually takes more than good intentions or a strong will. Drugs change the brain in ways that make quitting hard, even for those who want to. Unfortunately, less than 42% of the individuals who enter treatment for drug and alcohol abuse complete it. Too often, a critical element is overlooked: co-occurring mental health conditions. Treating mental illnesses is crucial to address the addiction and overdose crisis.

Source: National Institute on Drug Use

*Brighton Recovery Center's completion rate is over 60%.*





## OCTAVIA'S JOURNEY

My family has a history of addiction – my parents have been in recovery since the 90s, I had recently lost an aunt to addiction, and I have a sister and cousins who are still struggling.

They opened up all of my wounds, they made me work on myself, and break down all the behaviors that caused my actions. They made me look at myself; it was the hardest thing in the world. They showed me who I really am, and they brought out the real me in myself. They taught me how to love myself again. I was taught the skills I never learned as a kid because I was too busy trying to get high and living life chaotically.

I spent more than ten years doing whatever it took to get the next high. I lost my kids, my marriage fell apart, I lost relationships with my family, and I was basically homeless.

Each time I would get sent to a treatment program, I would go through the motions and get right back out and use again. It would barely slow me down at all.

A probation violation got me sent to Brighton Recovery Center, and they brought me to a complete stop. I tried to fake it and say everything they needed to hear so I could get back out again, but they wouldn't let me rush the process. I was so used to other treatments that rushed to cram everything into me very quickly. But Brighton Center moves at your own pace and won't move you forward until they can see the change in you at each step of the program.

I went through the first year of the program with a rebellious attitude. I was so angry and unwilling to change anything about myself or do anything different. They tried to reach me for the longest time, to see that I was at rock bottom even though I felt perfectly fine on the inside, and I fought it with every bone in my body.

When I finally had that breakthrough, it was a relief to everyone. Finally! I got it! I was in the program for 16 months – every other treatment program would have put me back on the streets to use again before then. But that long-term process was what I needed to get through all those layers to the real me underneath.

I benefited from learning life and career skills that support my long-term recovery. I also had the opportunity to be part of the catering team through CENTER TABLE, where I further developed skills.

Now, I can live a life I never imagined. I have a great job where I run a team, I've gotten two promotions, and my colleagues came to my graduation ceremony from Brighton Recovery Center to support me on my recovery journey.

I have a home, a car, and a healthy relationship with someone who understands and supports me. Most importantly, I delivered my baby girl completely sober, and I get to be her parent every single day. I am at peace with my life and myself and I thank Brighton Center daily.

## CHRISTI'S JOURNEY

As an alumna of Brighton Recovery Center for Women, I enjoy coming back to the house and being involved in the journey with ladies in the program. And it is a real gift. This house helped make me who I am today and saved my life. We call each other sisters. My older sisters [further along in the program or alumna] would come in and visit, my younger sisters would come in after me, and we'd get to go through some of the program, some of the journey, together. There is nothing like feeling like you belong somewhere, like someone understands you, like someone wants to take the time to listen to you and what's going on in your head and in your life. There's absolutely no replacement for it. I'm extremely grateful for the house for so many reasons. I can't believe what my life is like today compared to what it was like when I was first introduced to Brighton Center. It is night and day. Absolutely miraculous. This house helps you to get to know yourself. These ladies love you until you learn how to love yourself. It makes all the difference in the world. It truly does. I'm honored to have been asked to speak at Brighton Recovery Center's New Beginnings graduation ceremony earlier this year. We receive a handmade quilt to celebrate our completion of this program. This quilt is very symbolic in my world. I received mine in 2017 when I completed the program. My grandbabies cover up with it today. What a miracle. Without a place such as Brighton Center, my older sisters, sponsors, and the community that reaches out to us ladies while we're in the house, my grandchildren would not have known "Mawmaw" to be a sober woman who's reliable and shows up when she says she's on her way. I am eternally grateful. Thank you.



# TOGETHER

our **TEAM** works to partner with individuals, each other, and the community to help families across the region achieve their **HOPES** and **DREAMS**.

## EMPLOYEES OF THE YEAR



For those who have shown exemplary performance in their career over a significant period of time as chosen by the President & CEO and Executive Leadership Team.



**Katie Luning**  
Senior Support Specialist



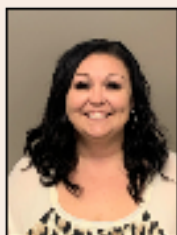
**Lauren Copeland**  
Development Director

Our organizational culture creates an atmosphere where employees feel deeply connected to the mission, vision, and core values of the Center. Opportunities to grow, gain leadership, and career advancement result in employees who spend their careers at Brighton Center positively impacting their community every day.

## BOILED FROG AWARD



For those who rise to the occasion and have shown the unique ability to overcome extreme obstacles in the performance of their job as chosen by their peers.



Erica Owens



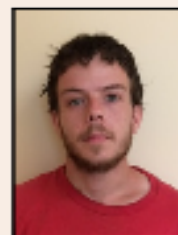
Mary Hecht



Amy Knapke



Rolina Mason



Jesse Shelburne

# In Loving Memory of Talia Frye



Talia's career at Brighton Center began in January 2003. During her tenure, she had the opportunity to lead and build program efforts in the areas of Crisis Stabilization (homelessness to self-sufficiency), Workforce Development, Family Development, Community Building, and Youth Development. This has included developing and implementing national best practice models such as the Center for Employment Training, Family Development, Family-Centered Coaching, and the Financial Opportunity Center model. She was promoted to Vice President in February 2021.

"Talia made each employee feel welcome, provided compassionate and approachable support, and was a consummate humble servant leader," said June Miller, Chief Financial and Administrative Officer. "The depth of her oversight at Brighton Center was undeniable. She was responsible for an organization with far-reaching impact and provided oversight to a multi-million-dollar budget, close to two hundred employees, and thousands of volunteers."

Not only was Talia an inspiring leader within Brighton Center, but she was also an innovative leader regionally and nationally. Much of Talia's work recently was spent as a driving force with national efforts on workforce development and the field of job quality leading, both the Northern Kentucky Chamber of Commerce's Employer Best Practice Symposium (which she Chaired for several years; most recently held in March of 2022) and the regional Job Quality Challenge (which received national attention).

She leveraged the experience of working with families on their journey to financial stability and independence to help employers build talent pipelines that benefit their bottom lines and the lives of their staff and families. She was an integral part of leading the work of Growing Regional Outcomes through Workforce (GROW NKY) Pillar 2: College and Career Readiness and Pillar 5: Employer Policy and Practices (for which she was the immediate past Chair).

Talia was instrumental in bringing The Talent Collaborative of Greater Cincinnati to our region (she was a vital founding member and the current Vice Chair). The Talent Collaborative of Greater Cincinnati is a regional tri-state workforce development initiative that is now a member of the National Fund for Workforce Solutions network of 34 communities across the U.S. seeking to improve workforce outcomes. The National Fund offers leading-edge resources, best practices, and thought leadership



## TAMMY WEIDINGER SUPER NOVA AWARD



The Tammy Weidinger Super Nova Award recognizes an employee who has risen through the ranks seeking additional responsibility, excellence in job performance, and strong commitment to the mission and core values.



**Lauren Allhands**  
Kentucky Career Center  
Director of Operations



## TENURE MILESTONES

**20 years**  
Mary Decker

**15 years**  
Joshua Snapp  
Selena Murdoch

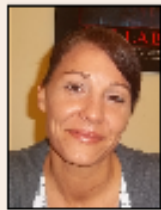
**10 years**  
Kirsten Fletcher  
Kasi Keating  
Eric Owsley  
Jessica Sizemore

**5 years**  
Georgia Mook  
Martha Sterling  
Mindy Puckett  
Gabrielle Fletcher  
Bill Roeding



## DIRECTOR AWARD

For those who have shown exemplary performance within their department as chosen by the Director.



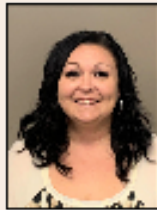
Kirsten Fletcher



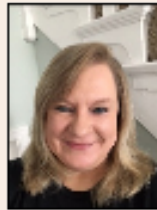
Brad Dansberry



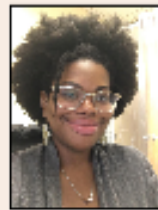
Mary Hecht



Erica Owens



Julie Waldroop



Danielle Montgomery



Rolina Mason



Tillie Hasson



Darlene Motley



Hannah Thompson



Christina McCaughan



Amy Knapke



Golden Neri



Gabrielle Fletcher



Melissa Young



Sheila Forman

to help benchmark and accelerate efforts, with an emphasis on equity and inclusion. Quoted for a recent press release for this groundbreaking initiative, the following was put forth by Talia: "Now, more than ever, our region's employers need access to the most cutting-edge solutions to meet their labor demands. At the same time, workers in our community need us to understand the complexity of their lives, including what factors help or hinder their ability to get and keep quality family-sustaining jobs. The National Fund for Workforce Solutions connects our community to the most innovative and comprehensive best practices our nation has to offer." This was the type of visionary and methodical thinker she was for our region.

Talia never turned down the opportunity to be at any table to share the voice of our families. She knew that it was important for others to understand their lives, the issues they faced on their journey to achieving their aspirations, and the critical role systems and public policy played in holding them back. She served on the Mental Health Court Community Board, Supply Chain OKI Board, Talent Strategies Symposium Planning Committee, the Newport Primary School Resource Center Advisory Council, the Northern Kentucky Chamber of Commerce Outstanding Women of Northern Kentucky Committee (having previously supported the Grow Mentoring Program and Annual Breakfast Committees), to name a few. She understood and lived Brighton Center's value of community leadership with heartfelt dedication.

"Talia was a champion for all, impacted thousands of lives, and believed deeply in the potential of every human and led them to believe in themselves," shares Melissa Hall Sommer, Vice President. "Her heart for giving back to the community was evident and she modeled the way for our staff and customers."

Talia was an alumna and steadfast supporter of Northern Kentucky University (NKU), where she earned a bachelor's degree in speech communication and a master's degree in public administration.

She provided instrumental leadership to the start-up of Brighton Center's Opportunity House on NKU's campus, an innovative project to develop

post-secondary education opportunities and stable housing for young adults (ages 18-24) with difficult lived life experiences...ultimately leading to academic success, employment, and self-sufficiency.

Talia was a respected and trusted community leader and sought-after national presenter in countless trainings and webinars; most recently, she presented on Understanding the Social Determinants of Work in August for the National Fund. Internally within Brighton Center, she received every employee award throughout her tenure. Externally, she was a recipient of the NKY Young Professionals at the NKY Chamber of Commerce with the Next Generation Leader Award in the Community and Social Services Category in July 2018; the Outstanding Workforce Employee of the Year in 2020 from the Northern Kentucky Workforce Investment Board; and a recent Workforce Cultivator nominee for the 2022 GROW NKY Workforce Innovation Awards.

"Talia was a special soul with the biggest heart who worked with strength and conviction daily to make this world a better place. The impact on us, our families, and our work over the last 20 years have been profound and beyond measure. The outpouring of love, support, and condolences has been immense, a testament to a meaningful life lived with purpose, kindness, and compassion. We are all better [the Center, this community, our region, and each of us] for having known and loved her. She was our mission; she was our values; she was Brighton Center with every fiber of her generous heart and passionate being," said Wonda Winkler, President & CEO.

At the end of the day, the north star for Talia was always those we serve; children, adolescents, young adults, adults, and older adults...everything she did had families at the core. She was a fierce advocate for them at every turn, and because of her, hopes and dreams were realized.

We loved her and will miss her deeply. Always in our hearts.



# IN HONOR AND MEMORY DONATIONS (July 1, 2021 - June 30, 2022)

## IN HONOR OF

### DEXTER ADAMS

Judith Guenther-Adams

### DON & KIM ADAMS

Judith Guenther-Adams

### JESS ADAMS

Judith Guenther-Adams

### KAREN & DEXTER ADAMS

Judith Guenther-Adams

### JOAN BOEHMER

Robert & Lynne Stewart

### CHUCK BOWMAN

Diana Bowman

### BOB & HELEN BREWSTER

Pamela Brewster Collar &  
William Collar

### MARY BUNNING

Norman & Sandy Klopp

### PATRICK EVISTON

Sue & Earl J. Kuhnell

### TIM EVISTON

Sue & Earl J. Kuhnell

### FESSLER FAMILY

Phyllis & Brent Cable

### FIRST CHRISTIAN CHURCH

Kathleen Edinger

### RACHEL FISK-RUDDE

Zola Fisk

### DENISE GOVAN

Dennis Daly

### HARVEY FAMILY

Phyllis & Brent Cable

### MIKE & MARY ANNE HENGEGHOLD

Donald & Lynn Hengehold

### SHEILA & TOM HORAN

Thomas & Janet Mentrup

### RYAN HUNTER

Zola Fisk

### LAUREN JETT'S BIRTHDAY

Facebook Friends

### ERIC JOHNSON

Michael & Mary Anne Meagher

### EMMA KAEIN

Cristina Krah

### JAMES KRUER

Diane Krue & Barry W. Andersen

### LINDA LIENHARDT

Charlene Rasche

### JERRY & CAROL LING

James & Margaret Ling

### JIM LING FAMILY

Gerald & Carol Ling

## WILL & NATALIE LUNDSTROM

Mark & Mary Lundstrom

### MCCABE FAMILY

Phyllis & Brent Cable

### LEAH & CHRIS MCDONALD

Joanne & Ron Laws

### NANCY MESSER

Amy Gardner

### LESLIE MUCK

Goyer Management International Inc.

### ANNIE & LIZ PERKINS

Clifford & Marilyn Perkins

### NINA PRYSOCK

Nancy Smith

### JERRY & JACKIE REINHART

Dick Fardo

### RACHEL ROBERTS

Bruce Reiser

### CECELIA SAKS ROTENBURG

John & Patricia Saks

### KAYLA WESTON RUDDE

Zola Fisk

### CLIFF SHISLER & LINDA HEATH

Joanna Shisler

### LYNNE SMITH

Eileen Shanahan

### MATT & STEPHANIE STRICKER

Mitchell Family

### JAKE, KATE, & LAINE VERMEMAN

Clifford & Marilyn Perkins

### KATIE WALTERS

Lisa Barrett

### KEN & TAMMY WEIDINGER

Eli Weidinger

### KEN WEIDINGER

Kristen Hitch

### WONDA WINKLER

Gloria Vetter

### DOUGLAS & LINDA WISHER

Ray & Erica Wisher

### REVERAND MATT YOUNG & ST. PAUL'S CHURCH

Charlene Rasche

## IN MEMORY OF

### JAMES ASMANN

Lon & Pam Gray

### JOE BARKET

Dorothy Grothaus

### LAURA BLANKENSHIP

Cicely Ingram

### ANDREA JO BOND

Karen Bond

## ROBERT & ROSEMARY BORCHERS

Kevin & Nancy Vance

### ROBERT BORCHERS

Patricia Costello

### LOST MEMBERS

Brighton Center Seniors

### TINA BROWN

Connie Davis-Moore

### JOURNEY BRUMMETT

William & Thelma Carpenter

### BUECHEL BROTHERS

Deborah Fischer

### JIM BUECHEL

Deborah Fischer

### BARBARA BURTON

William & Thelma Carpenter

### JOHN CLAYBERN, JR.

Emma & Patricia Baker

### JACK COMBS, SR.

Jorine Combs

### THOMAS COX

Angie Bates  
Mary Pat Behler  
Laura Brinson  
Lisa Chaplin  
Steven & Judy Herbold  
Michael Madigan  
Mac McFarland & Charlene Veley  
Alice Minnick  
Megan Nein  
Anita Prater & Lisa Stewart  
Betty Smith  
Bill Smith  
Rickey Smith  
Andrew Thompson  
Kathleen Watson  
Bruce Whalen & Sandra  
Gumm-Whalen  
Flanders Road Church of Christ  
KYASAP of Northern Kentucky  
Northern Kentucky People  
Advocating Recovery

### ROSE MARIE DUSING

Carol & Mark Buemi  
Steven & Peggy Dehne  
Michelle & Robert Hudson  
Patrick & Marie Steffen  
Debbie & Richard Westheimer

### DECO S. FARRIS

William & Pamela Phillips

### DELORES FARRIS

William & Pamela Phillips

### SUZANNE FRICK

Charles Frick

### ROBERT GLAAB

Suzette Glaab

### JACK GROTHAUS

Dorothy Grothaus

### DEBORAH GROVER

Sue Norris

## RAY & LINDA HATTON

Kassie Hatton  
Celanese Foundation

### ROBERT B. HOPPENJANS

Robert & Marlene Hoppenjans

### SAMUEL HURRY

William & Thelma Carpenter

### MARY ANN KEATING

Stephen Helbling

### JOHN TIM KENNEDY

Janice Kennedy

### NORA L. KIMBROUGH

William & Thelma Carpenter

### WILLIAM J. LONNEMAN

Mary Lonneman

### GERTRUDE LORENZ

Edward Lorenz  
Robert & Dolores Lorenz

### ROBERT LORENZ

Edward Lorenz

### JEROME H MARKOSKI

Robert Bosch Automotive Steering

### JOANN MCCAUGHAN

Kate & George Arthur

### LILLIAN & NELSON MCCORMICK

Lisa McCormick

### KATHERINE MCGOVERN

Diane Krue & Barry Andersen

### MARSHA MCKNIGHT

Rosan Lorentz  
Sharon Statzell  
Wonda & John Winkler

### SHARON MCLAUGHLIN

Carl & Rita Arlinghaus  
Lee Laney  
Walter & Martha Witt

### MARY WINNIE MEISTER

William Butler  
Eileen Byrne-Smock  
Kathy Cahill  
Doreen Canton  
Chris Grosser  
Gina Heeg  
Anna Hehman  
Robert & Linda Howarth  
James & Sheila Jones  
Deborah Lydon  
David Meister  
Richard Rensing  
Mary Rust  
Jim & Linda Simpson  
Rosemary Sizemore

### LYDIA PANKIW

Michael & Melissa Williams

### VIRGINIA REISING

George Reising

## ROBINSON FAMILY MEMBERS

Mary Ann Robinson

### EDWARD JOSEPH SANDER

Elizabeth & Daniel Beiting  
Pamela Hayes  
Julie Keller  
Cathy McCaffrey

### MS. MARY KAY SARGE

Bonnie Sarge

### MARY ALICE & KIM SCHILLING

James Schilling

### MARY KAY SCHMEING

Mark & Susan Hoffman  
Janet Norton  
Richard Schmeing  
Schaefer Family Living Trust  
St. Henry's District High School

### DR. JAMES A. SCHROER

James Schroer

### TOM SCHULTZ

Robert & Michele Daunt  
Mary Lou Shelton  
Gayle Klopp

### JAMES SHOUSE

Edward & Carol Brun  
James & Donna Clapp  
Jennifer Goble  
Michael Schmidt  
Mary Schwab  
Jennifer & Amy Wiley

### DON STAAB

Sara & Donald Staab

### BOBBY STEFFEN

Thomas & Kathleen Gerrein

### DONALD F. STEIN

Marina Abanto  
Wayne Combs  
Jill Conway  
Jeffrey & Lisa Fangman  
Ronald & Mickey Ginter  
Doug and Cindy Rust  
C. Stein  
Barry & Patricia Watson  
Suzanne Wycoff  
Northern Kentucky Letter Carriers

### ED STEVIE

Lisa Foster  
Kathleen Stevie

### YVONNE STROPKI

Bonnie Sarge

### CHERYL VANDELICHT

Nellie Scism

### WAYNE WALDROOP

June Miller  
Donna Mullins  
Jennifer & Amy Wiley  
Wonda & John Winkler  
Darlene Walker  
William & Thelma Carpenter



# ANNUAL DONATIONS (July 1, 2021 - June 30, 2022)

## ELLA PEACHIE WALKER

William & Thelma Carpenter

## JANET WILLOUGHBY

M. Baumbach  
James & Lynne Leinart  
Saratoga Place Seniors

## ED WILZ

Mary Adams

## GINGER YEAGLE

Martha Barnes  
Karen Derrer  
Mark & Lisa Donnelly  
Gina Hartke  
Lynne List  
Stephanie Sebastyn

## ANNUAL DONORS

July 1, 2021 - June 30, 2022

### LEGACY

#### \$10,000 and above

American Mortgage Service Co.  
Ascent Private Capital Management  
Blue Star  
Richard & Lisa Boehne  
Brandon & Sara Bray  
Lawrence Brennan & Karen Enzweiler  
William Case & Lisa Cassetta  
Celanese Foundation  
Churchill Downs  
Duke Energy Foundation  
Duke Energy  
Fidelity Investments  
Henry & Elaine Fischer  
Greater Cincinnati Foundation  
Fred & Betty Jo Haas  
Michael & Mary Hengehold  
Honorable Order of Kentucky Colonels  
Terence & Christy Horan  
Horizon Community Funds  
Joyce Hoskins  
Hub + Weber Architects  
David & Elizabeth Koeninger  
Koeninger Family Fund  
Jim & Mary Ellen Millar  
PNC Charitable Trusts  
SC Ministry Foundation  
Scripps Howard Foundation  
St. Elizabeth Healthcare  
The Butler Foundation  
TL Ashford & Associates  
Truist  
U.S. Bank Foundation  
Union Savings Bank  
Gregory & Leigh Worley

### LEADERSHIP

#### \$5,000 to \$9,999

American Fundraising Foundation  
Crossroads Church  
Dollar General Literacy Foundation  
Ernst & Young  
First Financial Bank  
Gerald & Laurel Fitzgerald  
Freestore Foodbank  
Frey Municipal Software  
Doug & Kristine Garbig  
Horan Associates  
Hueneker Foundation  
Timothy Johnson  
Joseph & Teresa Lonnemann  
Meijer  
Messer Construction Company  
Northern Kentucky University

PNC Foundation  
Julie & Eric Schimpf  
Nancy Schofield  
David Schuler  
Clifford Shisler & Linda Heath  
Thomas & Christy Stoll  
Turner Construction Company  
Foundation  
Verst Group Logistics, Inc.  
Tammy & Kenneth Weidinger

### COLLABORATOR

#### \$1,000 to \$4,999

A & R Logistics  
ABC Supply Company, Inc.  
Mary Adams  
Airon Manufacturing  
Albert S & Anna L Rawe Family  
Foundation  
Damon & Anitra Allen  
Nancy Allen  
Christy & James Alwell  
Scott Anderson  
Aaron & Angela Anderson  
Anonymous  
Apartment Association Outreach, Inc.  
Aristech Surfaces  
John Baines  
Baird  
Baker Stamping  
Barnes Dennig  
Mindy Bartel  
Beacon Electrical Contractors  
Herbert & Wilma Beigel  
John Benton  
Best Furniture Gallery  
Kenneth & Shea Blackburn  
BME, Inc  
Brand It For Good  
Doug & Sheila Bray  
Robert & Helen Brewster  
Pamela Brewster Collar & William Collar  
Jo Ann & Michael Brown  
C-Forward, Inc.  
Central Bank  
Robert & Susanne Cetrulo  
Charities Aid Foundation of America  
Charter Communications  
Christ Church, U.C.C.  
Cinfed Credit Union  
Lloyd & Mandy Cobble  
Philip & Sheila Cohen  
Lauren Copeland & Nathan Price  
Brian & Carrie Crecco  
Dance Express LLC  
Rita & Tim Daniels  
Dashel, Inc.  
Deloitte  
Divisions Maintenance Group  
Donald R. Frey & Company, Inc.  
EGC Construction Corp.  
Susan & Donald Embs  
Enterprise Holdings Foundation  
EQS Inc  
James Evans  
Fidelity Brokerage Services LLC  
Fidelity Charitable Gift Fund  
First Christian Church  
First Presbyterian Church  
Florence Baptist Temple  
Rita & Dennis Geiger  
General Electric Credit Union  
George & Mary Jo Budig  
Family Foundation  
Thomas & Nancy Gilman  
Scott & Emily Goebel  
Vernon & Joan Goetz

Grace Meadows, LLC  
Daniel & Elaine Groneck  
Kevin & Dawn Groneck  
GroundSystems, Inc  
Guardian Savings Bank  
Lara & Mark Guttadauro  
Fred & Kelly Haas  
Hamilton County Community Foundation  
David & Debra Hausrath  
Jeremy & Ainslie Hayden  
David & Patricia Hehman  
Mari & John Hengelbrok  
Wilma Herrick  
Mary Hertzman  
Highland United Methodist Church  
Highlands Middle School  
Bonnie & Carl Hosea  
Carl Huether  
Sarah & G. Edward Hughes  
Human Nature  
Interact for Health  
James C. & Gayle F. Davis  
Family Foundation  
Johnson Investment Counsel, Inc.  
Michelle & James Keller  
George & Patrick Kingston  
Patrick & Clara Klocke  
Kroger Community Rewards  
Michael & Erin Lakin  
James & Mary Lazzari  
James & Diane Lenhoff  
Leigh & James Lesser  
James & Sylvia Liles  
Mary Lonneman  
Christopher Malotke  
Robert McCord  
Mark & Susan McDonald  
Julia McGivern  
Abby & Michael McIntosh  
Meet NKY  
Merrill Lynch  
Tony & Betsy Miglio  
Miramar Charitable Foundation  
Model Property Development, LLC  
Benjamin Mulling  
Stephen Murphy  
Patricia Murray  
Newport Millennium Housing  
Corporation IV  
Jim & Sharon Nichols  
NKY Hates Heroin  
Northern Kentucky Insurance Agency  
Jane Oberschmidt  
PalletOne Headquarters  
Paradigm Pain and Spine Consultants  
Perfetti Van Melle USA, Inc.  
Mary & Roger Peterman  
Phoenix Services  
PNC Institutional Asset Management  
Timothy & Jayme Powell  
Anita & Lisa Prater  
Chris & Therese Quitter  
Timothy & Barbara Rawe  
Remke Markets  
David Rhodenbaugh  
River Metals Recycling LLC  
RNDC Kentucky  
Robert Bosch Automotive Steering, LLC  
Carol Roberts  
Robert Rosing  
Judy Rouse  
Robert & Tracie Saelinger  
Safran Landing Systems  
Deanna Salisbury  
Charles & Julie Scheper  
Jennie & Jeff Schlosser  
Marianne Schmidt

Karen Schmidt  
Joe & Ginie Schmidt  
Julie & Joseph Schoepf  
Tony & Karen Schweier  
Seco Electric Co., Inc.  
Erin Shull  
Mike & Debbie Siegert  
Keith Siereveld  
Robert & Melissa Sommer  
St. John United Church of Christ  
St. Joseph Church  
Steven & Sue Steller  
Mark & Karen Stephens  
Taft Stettinius & Hollister LLP  
The Benevity Community Impact Fund  
The Marge & Charles J.  
Schott Foundation  
Janice Urbanik  
U.S. Bank  
Rachel & James Votruba  
Walters and Mason Retail, Inc.  
Karla & Joe Webb  
Gene & Carol Weber  
Caroline & William Weltzer  
Ted & Teresa Werner  
WesBanco  
Western & Southern Financial Fund  
Ransom Wick  
Jennifer & Amy Wiley  
Lisa & KC Wilson  
Janice Winkler  
Wonda & John Winkler  
Robert & Nancy Witte  
Donald & Joyce Wojtowicz  
Bradley Wolfe & Robin Seibel  
YourCause, LLC  
Zins Plumbing, LLC.

### INSPIRATION

#### \$500 to \$999

John & Laurie Acklen  
Amazon  
AmazonSmile Foundation  
American Homeland Title  
Community Foundation  
Amerigroup Corporation  
Robert & Wendy Arnold  
Kate & George Arthur  
Charlene & John Bankemper  
Amy Bates  
Ellen Bates  
James & Rebecca Bilbo  
Karen Bond  
The Bowens  
BPI Painting Company  
Brands Insurance Agency, Inc.  
Shannon Bray  
Andrea Breen  
Stephen & Meredith Brennan  
Christine & Flo Buendia  
Mark Bukala  
Mary Bunning  
Anne & John Busse  
Allison Carissimi  
Donna Carr  
Combined Federal Campaign  
Thomas & Ethel Comte  
Carla Cubert  
Jennifer Daly  
Derek Dandrea  
Mary & Matthew Darpel  
Hunter Day  
Dayton Freight Lines, Inc  
Edward Deitemeyer  
Dental Center of Florence  
Jerome & Judith Dierig  
Cecelia & Ken Dorgier

Marcy Driscoll  
Todd Duesing & Thomas Haggard  
Duke Energy Corporation PAC  
Donna Dunn  
Dianne Dunn  
Jonathan & Tara Eaton  
EDJ Inc  
John Enzweiler  
Evelyn Mae Family Fund  
Dan & Renee Fagel  
Faith United Church of Christ  
Laura & Paul Farmwald  
FedEx  
Patricia Ferris  
Florence Lions Club  
Bill & Joy Fotsch  
Donald & Elsa Frey  
Talia Frye  
GFL Americas LLC  
Good Sam Angels  
Lon & Pam Gray  
Jenn Greber  
Mark & Susan Grimme  
Linda Groce  
Joey Grzelak  
Matthew & Elizabeth Guy  
Hall Technologies  
Mike & Jennifer Hansert  
Matthew Heeman  
Tony & Jane Herms  
Douglas Hudson  
Lawrence & Marlene Humbert  
John C. Feinauer Welding, Inc.  
Julia Johnson  
Eric & Tricia Johnson  
John & Louise Jordan  
Brian Kerdolff  
Jonathan Klein  
Jay & Renee Krebs  
Landstar Transportation Logistics, Inc.  
Gary Lang  
David Lange  
Lawler Hanlon  
Daniel & Susan LeFang  
Joseph Lohner  
Steven & Kimberly Long  
Mark & Mary Lundstrom  
Shaun & Jennifer McCloskey  
Lisa McCormick  
John McKenzie  
Medpace, Inc.  
Mellott & Mellott  
Kimberly Heimbrock & Richard  
Mierenfeld  
June Miller  
Kent Miller  
Mission Church of God  
Robin Mohring  
Richard & Anita Morris  
Stephen Murphy  
Ken & Alison Muth  
National Band & Tag Co.  
Victor & Wilma Needham  
Jaimie Niemczura  
Sarah Niese  
North Key Community Care  
Park National Bank  
Paypal Charitable Giving Fund  
Steve & Dana Pendery  
Sharon Prather  
Les & Nina Prysock  
Matthew Purpus  
Stephen Rabe  
John & Patricia Ramler  
Carol & Paul Ray  
Annamarie & Dan Reilly  
Alan Riedinger

# ANNUAL DONATIONS [July 1, 2021 - June 30, 2022]

Romar Management Co.  
J. David & Dianne Rosenberg  
Jane Scharstein  
Richard Schmeing  
Molly & Robert Schottelkotte  
Christine Schuler  
Terri Schwarber  
Elaine Semancik  
Maida & Chuck Session  
Debbie Simpson  
Julie Sparks  
Steel Technologies LLC  
Kimberly Teegarden  
The Standard  
Alan & Dianne Thomas  
Trinity 163  
Timothy & Thea True  
William & Sheridan Turner  
Thomas & Martha Vergamini  
Edward & Mary Lou Vogel  
Michael Walters  
Marissa & Andrew Weast  
Wells Fargo  
Mike Wendling  
Jason & Maria Wessel  
West Chester Permit

## HOPE \$100 to \$499

Wayne & Judith Adams  
Jo Alexander  
All Points Media LLC  
Brian Allison  
James Amato  
American Modern Foundation  
AMS Business Equipment  
Sara Anderson  
Sherry & Steven Andrasik  
Gordon & Sarah Arey  
Eric Ark  
Michael & Laurie Arnold  
Asbury United Methodist Church  
Donald Bahr  
Nancy & Scott Bailey  
David & Linda Bailey  
Drew Bamberger  
Jake Bartel  
Christine & Jeremy Barth  
Angie Bates  
M. Baumbach  
Greg Beach  
Raymond & Elizabeth Beck  
Susanne Becker  
Mary Pat Behler  
Wayne & Barbara Beimesch  
Jamie Bennett  
George & Edith Bentley  
Victoria Berling  
Stephen & Gale Bernardon  
Michael Betts  
Biggby Coffee  
Jim & Laura Birkenhauer  
Steven Birkley  
Katlynn Blanton  
Donna Bloemer  
Paulette Boden  
Stephanie Bogenschutz  
John Borches  
Bradie Bowen  
Simon Boxall  
Mary Boyer  
Margaret Brickley  
Brighton Center Seniors  
Stephanie Brockman & Coriell Lewis  
Teresa Brooley  
Cara Brooks  
Donna Brown  
Danae & Jacob Brown

Robert & Rebecca Brown  
Bonita & Wesley Brown  
Jarrid Brunswick  
Michelle Bullis  
Michelle & Michael Burdett  
Christina Burgess  
William Butler  
Eileen Byrne-Smock  
Meg & Mike Callahan  
Campbell County Retired  
Teachers Association  
Doreen Canton  
John Carneal  
William & Thelma Carpenter  
Dawn & Mike Carson  
Chelsea Case  
Lisa Chaplin  
Chris Christensen  
Cincinnati ICO  
Nancy Clark  
Adam Clinkenbeard  
Cobblestone Cafe  
Deborah & Marc Combs  
Jorine Combs  
Congregation of Divine Providence  
Valerie Copeland  
Corporate Cleaning Systems, Inc.  
Patricia Costello  
Richard & Roberta Criss  
Mary Cropper  
Sanad Dababneh  
Linda & Audie Dailey  
Robert & Beth Dames  
Robert Davies  
John & Brenda Dawkins  
Joan Day  
Degenhardt Enterprises, LLC  
Steve Del Gardo  
Regina Dell  
Thomas & Martha Depenbrock  
Karen Derrer  
Grant & Marian Dibert  
Mary Dietz  
Rita Dixon  
John & Jane Domaschko  
Mark & Lisa Donnelly  
Marlene & Michael Duffy  
Dunham Family  
James & Jentry Eck  
Kathleen Edinger  
Kathryn Eifert  
Correy & Erin Eimer  
Jeffrey Elder TOD  
Erlanger United Methodist Church  
Louis & Marilyn Esselman  
Joyce Evans  
Michelle & Harold Fardo  
Dick Fardo  
George Fee  
Rickie & Kathleen Feldhaus  
Garrett Ferrara  
Kaitlyn Fischer  
Deborah Fischer  
Charlie & Susan Fisher  
Sue Flick  
Gayle Francis  
Becca Freyhof  
Charles Frick  
Teri Friedrich  
Catherine Gabis  
Generous Charitable, Inc  
Thomas & Kathleen Gerrein  
Mary Gibson  
Mickel & Joyce Gilbert  
Suzette Glaab  
Amanda Goins  
Dorothy & Roy Gold

Goyer Management International Inc.  
Gary & Sharon Graff  
Janet Grau  
Kris Grauer  
William Griesser  
Donald & Judith Griffin  
Madison Groneck  
Judith Guenther-Adams  
Glenn Gunning  
Jim & Cheryl Haas  
Alan Haas  
Heather Hagen  
Hardedge Tool Inc.  
Lisa Harris  
Mariah Harris  
Ellen Haskell  
Dorothy & Charles Hayes  
Pamela Hayes  
Dale Hayes  
Lauren & Andrew Head  
Beth & Daniel Healy  
Mary Hecht  
Donald & Megan Heeb  
Dennis Heeb  
Mary Kay & Roger Hehman  
Susan & Stephen Heitzman  
Donald & Lynn Hengehold  
Mike & Melissa Hertzberg  
Ann Hicks  
Wesley Hicks  
David Hielt  
Kristen Hitch  
Kathleen Holzderber  
Jillian Hoover  
Robert & Marlene Hoppenjans  
Sheila & Tom Horan  
Horner Industrial  
Helen Horton  
Erica Horton  
Patricia Horwitz  
Ellen Hummel  
Cicely Ingram  
Ivey Mechanical Co. LLC  
Jill Johnson  
Johnson & Johnson  
Richard & Mary Jones  
Kia Kai  
Jeanne Karrick  
Kate Kassiss  
Kendra Scott LLC  
Russell & Susan Kerdolff  
Amy Kerdolff  
Ronald & Carolyn Ketterer  
Chad King  
Mark & Paula Kiser  
Michael & Beverly Kleier  
Norman & Sandy Klopp  
Daryl & Teresa Knauer  
Kathy & Andrew Knepfle  
Harold & Marcy Kremer  
Paul & Bonnie Kroth  
Diane & Barry Kruer  
Sue & Earl Kuhnell  
Olivia Kusch-Kavanagh  
KYASAP of Northern Kentucky  
Sydney Lamping  
Lee Laney  
John & Julie Lange  
Pamela Lasita  
Joanne & Ron Laws  
Eric Leedy  
Emily & Mark Leopold  
Jay & Heidi Lewis  
Gerald & Carol Ling  
Lynne List  
Mike & Carolyn Longland  
Rosan Lorentz

Edward Lorenz  
Robert & Dolores Lorenz  
LPL Financial  
Grace Ludlow  
Candace & Carol Ludwig  
James & Becky Luersen  
Kathryn Luning  
Deborah Lydon  
Douglas & Jane Lyons  
Steve Mackie  
Michael Madigan  
Marathon Petroleum  
John & Margaret Marlow  
Julie Mart  
George & Frances McAllister  
Steve & Renee McCafferty  
Cathy McCaffrey  
Rachel & Gary McCormick  
Sue McLaughlin  
Kelly McMahon  
Michael & Mary Anne Meagher  
Dennie & Claudia Meeks  
Jack & Brenda Mehalko  
Stephen & Jane Meier  
Laura Menge  
Gary & Kathy Menne  
Thomas & Janet Mentrup  
Roger & Mary Ann Meyer  
Denise Michels  
MidAmerica Safety Solutions  
Mike Menzie Charitable Foundation, Inc.  
Stephen Miller  
Jennifer Milligan  
Alice Minnick  
Mitchell  
Diana Mitchen  
Lyndsey Monahan  
Michael & Carol Monnin  
Anna Moore  
Richard Moore  
Vanessa Moorman  
Jack & Phyllis Moreland  
Jill Morenz  
Gregory Moser  
Donald & Frances Mosser  
Konrad Moszczynski  
Michael & Sally Muehlenkamp  
Rose & Michael Mueller  
Dale & Patricia Mueller  
Richard & Julie Mueller  
Donna Mullins  
Kimberly Mullins-Ward & Dan Ward  
John & Connie Mumme  
Selena Murdoch  
Heidi Murley  
Twila Murphy  
Michael & Julie Murray  
Kelsey Murray  
Michael & Renee Napier  
Sara Newberry  
Newport Primary School  
Thomas Nienaber  
James & M. Niewahner  
Edward & Michele Nolan  
North American Properties, Inc.  
Janet Norton  
Adedji Oduwale  
Stacie Olson  
Christopher Owens  
Cathy & Peter Owsley  
Michael Parsons  
Gaby Peyton  
Barbara & Steven Phillips  
Laura & Adam Pleiman  
Kirk Porter  
Angela Praiswater  
Kay Preston

Mark Prigge  
Russ & Pam Proctor  
James Ramey  
Denise & Ed Ratterman  
Ronald & Mary Rawe  
Thomas Rebel  
Mary Rechten  
Ken Recob  
Richard Reid  
Jared Reinecke  
Reinert Manufacturing Inc.  
Bruce Reiser  
Pascal & Jean Renouil  
Richard & Jenny Rice  
Dixie Riegler  
Robbins, Kelly, Patter, and Tucker LP  
Lisa Robins  
Thomas & Patricia Ross  
Stephen Roth  
Garry & Sally Rust  
Doug and Cindy Rust  
Paul & Margaret Ruth  
Molly Saks  
Tara Salah Eldin  
Beth Sarkar  
David & Carolyn Scheper  
Denise & Jaimi Schindler  
William & Rebecca Schmidt  
Vira Schmidt  
Bill Schmidt  
Louis Schmidt  
John & Mary Schneider  
Gregory & Diane Schneider  
Charlotte Scholl  
James Schroer  
Barry & Rebecca Schultz  
Elizabeth Schumacher  
Stephanie Sebastyn  
Mary Seiter  
Eileen Shanahan  
John Shea  
Robert Shearer  
Jason Sheets  
Brian Shepard  
Joanna Shisler  
Ron Sickmeier  
Jake & Kelli Sieber  
Megan Simmons  
Andrew & Arpita Singh  
Brice Smallwood  
Bill Smith  
Nancy Smith  
Barbara Smith  
Rickey Smith  
David & Dolores Sommerkamp  
Deana & Todd Sowders  
Edward & Arlene Sparks  
Carol Sparks  
Chris & Cynthia Spicker  
Kimberly Spreder  
Sara & Donald Staab  
Mary Ann Stacey  
Sharon Statzell  
Kathleen Stevie  
Stephanie & Douglas Stiene  
Beverly Storm  
Chris Strahl  
Kathryn Swafford  
Susan Swain  
Susan Tarvin  
Juliann & Dan Taylor  
The Columbus Foundation  
The Yoga Bar  
Leslie Thomas  
Thomas More University  
Gregory & Kathleen Thomes  
Andrew Thompson



# ANNUAL DONATIONS (July 1, 2021 - June 30, 2022)

Lawrence & Mary Ann Tiemeier  
Brian Todd  
Alicia & Tyrone Townsend  
Tri-State Buildings, Inc.  
Timothy Troendle  
Sylvia Troescher  
Mike & Lorie Turner  
Mark Tyler  
United Way of Greater Milwaukee  
United Way of Kentucky  
Kevin & Nancy Vance  
Lee & Michelle Veazey  
Yovani Velasquez  
Nancy Velten  
Justin Verst  
Gloria Vetter  
Jeff & Jamie Wagner  
Julie Waldroop  
Chris Walker  
Maria Walker  
Zach & Katy Wall  
Philip Walter  
Walton Homemakers  
Mary Joan Ware  
Jerry & Katherine Warner  
Cathryn Wasson  
Michelle & Gloria Weber  
Eli Weidinger  
Sarah Weidinger  
David & Cindy Weidinger  
Jeff & Angie Wells  
Wesleyan Women Circle  
Sandi Wethington  
Bruce & Sandra Whalen  
Corinne White  
Donn Wiley  
Jorja & Jaxon Wilkerson  
Glenn & Elaine Williams  
Sharon & Carl Williams  
S. Gordon Wilshire  
Martin & Rebecca Winchell  
Erica Wisher  
Douglas & Linda Wisher  
Amy Wooldredge  
Chelsea Wullenweber  
Suzanne Wycoff  
Carina Yagodzinski  
Angie Yellina  
Paula Zalla  
Ted & Chris Zalla  
Alexia Zigoris  
Robert & Mary Zumbiel

## COMMUNITY UP to \$99

3M Foundation  
Marina Abanto  
James & Judith Adams  
Justin Adams  
Samuel Adkins  
Kerry Allen  
Marvin Allen  
Alpha + Beta Strategies, LLC  
Michael & Lee Amundsen  
Rose & Don Andres  
Carl & Rita Arlinghaus  
Shannon Atherton  
Ben Bagli  
Emma & Patricia Baker  
Sarah Baker  
Patricia Banks  
Prabuddha Bansal  
Martha Barnes  
Barbara Barnes  
Jen Barnett  
Lisa Barrett  
Greg & Donna Baxter

Rose & Frank Beckerich  
William Beckmeyer  
Elizabeth & Daniel Beiting  
Valerie & Jim Benton  
Barbara & Thomas Biltz  
Laural Bishop  
Brenda Black  
Jayne Black  
Victoria Black  
Diana Bowman  
Mary Bradburn  
Carrie Brauch-Cameron & John Cameron  
Bright Funds  
Laura Brinson  
Frank & Donna Broering  
Timothy Brookbank  
Melvin & Shirley Brown  
Edward & Carol Brun  
Timothy Brungs  
Paul & Jean Buchman  
Carol & Mark Buemi  
Mary Jo & Thomas Burkart  
Mary & James Burton  
Phyllis & Brent Cable  
Kathy Cahill  
Janet Calme  
Christopher Cannon  
Camilo Cano  
Christopher Carrano  
Lisa Carrelli  
Bryon Carter  
Jean Cate  
Charles Schwab & Co. Inc.  
Dan & Linda Chism  
John & Vickie Cimprich  
Cincinnati Marathon, Inc.  
Judith Clabes  
James & Donna Clapp  
Michael Clark  
Clark Schaefer Hackett  
Elizabeth Clos  
Brian Coleman  
Wayne Combs  
Anthony & Phyllis Conradi  
Jill Conway  
Tina Corder  
David & Amy Cornett  
Ellis Couch  
Gertrude & Anita Cox  
Donald & June Crawford  
Cheryl & Jonathan Cullick  
Chris Cusentino  
Dennis Daly  
David & Margie Darby  
Robert & Michele Daunt  
Robert & Carol Davies  
Connie Davis-Moore  
Steven & Peggy Dehne  
Mike & Carol Desmond  
Julie & Michael DeSylva  
John & Marsha Dewitt  
Fatime Diagne  
Kristie Dierig  
Jeremy Donelan  
Lisa Dorriere  
Donald & Esther Drewry  
Kimberlee Egan  
Charles Egerton  
Stephen & Margaret Eilerman  
Michael & Sharon Emerine  
Wayne & Marie Enstice  
Veronica Escobedo  
Richard Evans  
Barbara Faeth  
Jeffrey & Lisa Fangman  
Frederick & Nancy Fehr III  
John Feldkamp

Kathleen Feldkamp  
Jerry & Linda Fields  
Amanda Filbrun  
M. Fischer  
William & Janet Fischer  
Zola Fisk  
Flanders Road Church of Christ  
Clifford & Wanda Flory  
Cole Foor  
Lisa Foster  
Monica Francisco  
Theresa Franks  
Joyce Frede  
Mary Jo & Charles Fredrick  
Frost Brown Todd, LLC  
Joyce & John Fryer  
Stanley Fugate  
Susan Gabbard  
Molly Garber  
Amy Gardner  
Ronald Gartner  
Henry & Mary Jo Germann  
Lynda & Martin Gerrety  
Marilyn & Norbert Gettys  
Kim Gilfert  
Ronald & Mickey Ginter  
Connor Ginty  
Givinga Foundation, Inc.  
Rosemary Glahn  
Jennifer Goble  
Gerald Goodwin  
Jay Gossett  
Dylan Graham  
Chris Grosser  
Dorothy Grothaus  
Sharon Grubb  
Thomas & Jenny Guidugli  
Laura Haas  
Kenneth & Tami Hall  
Tami Hall  
Jeff & Diane Hamlin  
Charles & Diane Hammond  
Thomas Hansman  
Catherine Hart  
Gina Hartke  
Alan & Janet Hartman  
Rebecca Harwood  
Cindy Hassel  
Kassie Hatton  
Lorraine Haverkamp  
Mary Heck  
Gina Heeg  
Barbara Hehman  
Anna Hehman  
Stephen Helbling  
Paul Hemmes  
Gail Hendricks  
Robert Hendricks  
James Hendy  
Steven & Judy Herbold  
Karen Herdina  
Sarah Herp  
Michael Hertzberg  
Michael Hicks  
Martha Hicks-Robinson  
James & Marilyn Hill  
Mark & Susan Hoffman  
Sharon Hoffman  
Brian Hokkanen  
Scott Holland  
Sharon & Tony Holstein  
Robert James Holyoke  
Robert & Linda Howarth  
Eric Howe  
Michelle & Robert Hudson  
Aaron Hunter  
Lance Ireland

Lauren Jett  
Marty Johnson  
Paul Johnson  
James & Sheila Jones  
Tina Jung  
Justgive - Great Nonprofits  
Dennis Kahrs  
Sambit Kar  
Michael & Mary Lynne Kehoe  
Rick & Pam Keitz  
Julie Keller  
Michele Kelley  
Janice Kennedy  
Nina Key  
David & Janice Klocke  
Gayle Klopp  
Emily Klopp  
Timothy Knue  
George Korey  
Alan Kostrick  
Judy Koulias  
Cristina Krah  
Kathleen Kunze  
Tim & Melinda Lampke  
Mary Lanier  
James & Margaret Ling  
Derrick Link  
Ryan & Jamie Linkugel  
Michael & Jean Listerman  
Kevin Logan  
Lisa & Steve Logan  
Theresa Ludwig  
Lisa Luecke  
Debra Mackey  
Macy's/United Way  
Julie Mai  
Donn & Pamela Manker  
Barbara Manyet  
Faith Marshall  
James Martin  
Mary Lou Marusin  
Dale Marx  
Michael Mastic  
Jessica Maus  
Shelly Maxwell  
Lucy May  
Andrea McCarty  
Dillon McCormick  
Michele McCoy  
Brett McCullers  
Charlene Veley & Mac McFarland  
Carol McGlone  
Christopher McGrady  
Mary & Michael McKeown  
Calvin McLain  
Talia McOwen  
Linda Meier  
David Meister  
Paul & Chuck Meyers  
Richard & Gail Michalack  
Justin Monger  
Mona Morrow  
Mount St. Joseph University  
Dianne & Albert Mulholland  
Ashley Myers  
Terrance Nally  
Megan Nein  
Ruth Neltner  
Network for Good  
Lombe Ng'andu  
Ralph & Bonnie Nilles  
James & Joan Noll  
Sue Norris  
Kyle Norsworthy  
Northern Kentucky Letter Carriers  
Northern Kentucky People  
Advocating Recovery

Vincent & Linda Notorgiacomo  
Christopher & Robin Novak  
Melodie Oaks  
Joseph & Dolores Oldendick  
Stewart Osborne  
Karen Owens  
Linda Owsley  
Eric Owsley  
Abigail Packer  
Katherine Papp  
Kim & Russell Parnell  
Erin Parton  
Stephen & Judith Peelman  
Clifford & Marilyn Perkins  
Wayne Petry  
William & Pamela Phillips  
Jennifer Phillips  
Brandon Pieschel  
Hunter Pike  
Janice Popp  
Randal Powell  
Anglia & Amos Powell  
Brenda Powell  
Dana Pratt  
Greg & Linda Price  
Thelma Pryse  
Ralph Fulton Auxiliary 6423  
Dustin Ramler  
Jason Rapp  
Charlene Rasche  
Patricia & Kenneth Rasor  
Beth Raum  
Randy Ravenscraft  
Edward & Catherine Rawe  
Pam & J. Kelly Read  
Red Hats Queens Council  
George Reising  
Richard Rensing  
Sophia Roberts  
Karen Robinson  
Mary Robinson  
Charlene Rogers  
Robert & Annette Rose  
Joyce Rosenfield  
Janet Rossi  
Leslie Rubcich  
Kevin & Madeline Rumker  
Mary Rust  
Jen Rutherford  
John & Patricia Saks  
Lori Salzarulo  
Saratoga Place Senior Center  
Bonnie Sarge  
Jack & Virginia Schaaf  
James & Nicole Schadler  
Jim Schadler  
Schaefer Family Living Trust  
William & Karen Scheyer  
James Schilling  
Michael Schmidt  
Gina Schneider  
David Schottelkotte  
Lawrence & Carol Schreiber  
Brooke Schulte  
William & Joan Schunder  
Mary Schwab  
Nellie Scism  
Joseph Scott  
Garrett & Beverly Scotty  
Charles & Rita Seger  
Marilyn Seward  
Tara Sexton  
Jon & Jacqueline Seymour  
Tammy Sharp  
Samuel Sherman  
Jeffrey Shirden  
Kelsi Simms



## ANNUAL DONATIONS (July 1, 2021 - June 30, 2022)

Jim & Linda Simpson  
Fred & Peggy Simpson  
Rosemary Sizemore  
Donna Slabaugh  
Betty Smith  
Jordan Spalding  
Harold & Judith Spitz  
Jo Ella St Charles  
St. Henry's District High School  
Patrick & Marie Steffen  
James & Beverly Stegman  
C. Stein  
Robert & Lynne Stewart  
Evan Stiene  
Kevin Stiverson  
Shannon Stockelman  
Kaitlyn Storie

Carrie Stortz  
Loren Tapp  
Robin & Michael Thomas  
Grace-Marie Thompson  
Violet Thurmond  
Maureen Tierney  
Rebecca & Dennis Timberlake  
Tracy Todd  
Total Quality Logistics, LLC  
Anita & Tim Tracy  
Jesse Turner  
Richard Turner  
Adrianne Underhill  
United Way of Central Indiana, Inc.  
Rebecca Van Damme  
Ryan Vaughn  
Glenn & Margaret Wagenlander

Jay & Joan Wagner  
Bridgitte Waldrop  
Wanda Walker-Smith  
Fred & Joanne Warren  
Ingrid & Andre Washington  
Madeline Watson  
Kathleen Watson  
Barry & Patricia Watson  
D. Lynn Watts  
Phyllis & Erica Weeland  
Heidi Weisman  
Richard & Deborah Wells  
Rich Wertz  
Debbie & Richard Westheimer  
Tisha Whisman  
Angela White  
Michael & Melissa Williams

Linda Williams  
Nicholas Williams  
Frances Wilson  
Madelyn Wisner  
Walter & Martha Witt  
Kathy Wooten  
Roger Wright  
Min Yu  
David & Jane Zapp  
Robert & Paula Zembrodt  
Xinyu Zhao  
Joseph Zureick

### ENDOW KY DONORS THROUGH GREATER CINCINNATI FOUNDATION AND HORIZON COMMUNITY FUNDS

Lawrence Brennan & Karen Enzweiler  
Kenneth & Shea Blackburn  
Richard & Lisa Boehne  
Doug & Kristine Garbig  
Daniel & Elaine Groneck  
John & Mari Hengelbrok  
Joseph & Teresa Lonnemann  
Jim & Mary Ellen Millar  
Joe & Ginie Schmidt  
Gregory & Leigh Worley

This listing reflects financial donations, Legacy gifts and pledges, and Endow KY gifts between July 1, 2021, and June 30, 2022. Every effort is made to ensure accuracy. Thank you! If you notice an error in our donor listing, please contact [development@brightoncenter.com](mailto:development@brightoncenter.com).



**THE ELIZABETH HERALD COMMUNITY OF SUPPORT AWARD** was established to honor those people, organizations, and community partners who work alongside us to achieve our mission and impact our community. This award is the highest honor we give a community or business partner, and this year's award was presented to altafiber (formerly Cincinnati Bell). altafiber has been an amazing partner and friend to the Center and has done so many wonderful things for us over the years. Just a few examples include transformational projects at Homeward Bound Shelter, our Brighton Recovery Center for Women, and Opportunity House. They have also supported our Holiday Drive, and their employees have gone above and beyond the expectation of a volunteer, always giving 100% and going further to finish projects to ensure the long-term success of our programs. Since 2019, for example, they have had 180 employees volunteer, giving us 1,586 hours...that alone equates to a value of over \$38,000. They

have supported us with their knowledge and expertise, provided donations in support of our families, and their employees have contributed to us financially. Their employees arrive and leave with smiles on their faces! They are a company that cares deeply about this community, and they are giving, extremely passionate, and make a meaningful difference in support of our mission!

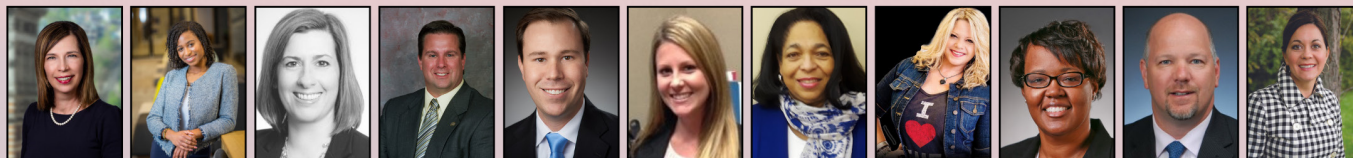
## BRIGHTON CENTER BOARD OF DIRECTORS



Dan Groneck Eric Johnson Dave Koeninger Alicia Townsend Damon Allen Christy Alwell Jake Bartel Kenneth L. Blackburn Bonita Brown Lisa Yeardon Casson Jennifer Ehrhardt Mark Exterkamp



David R. Fleischer Fred Haas III Jeremy A. Hayden Julia Johnson Mike Lakin Heidi Murley Christopher Owens Leyla Pena Laura Pleiman Annamaria Reilly Sophia Roberts Joe Schamer



Marianne Schmidt Madison Smith Julie Sparks Tom Stoll Justin Vanderglas Jamie Wagner Wanda Walker-Smith Katie Walters Ingrid Washington Jason Wessel Caroline K. Weltzer

## BRIGHTON PROPERTIES BOARD OF DIRECTORS



Caroline K. Weltzer Brian Crecco Julie Schoepf Ken Muth Robert Arnold Aaron Anderson Joyce Duve LaQuies Harrison Susan McDonald Brooks Parker Tom Stapleton



# STATEMENT OF ACTIVITIES AND CHANGES IN NET ASSETS FOR FISCAL YEAR ENDED JUNE 30, 2022

Brighton Center's solid financial foundation is built upon our high ethical standards of not only delivering services that are equitable and impactful, but also managing our finances with transparency and the highest level of accountability to our community, funders, and Board of Directors. Our strong commitment ensures that we can continue providing essential services to fulfill our mission.

## CONTRIBUTIONS, SUPPORT, AND REVENUE

United Way Allocation	\$1,495,023
Contributions	\$1,962,675
Donated Goods	\$605,748
Special Events, Net of Related Expenses	\$130,754
Fees and Grants from Governmental Agencies	\$7,236,885
Fees and Grants by Unassociated Organizations	\$1,031,640
Program Service Fees	\$273,335
Revenues by Associated Organizations	\$145,335
Sales of Supplies and Services	\$46,798
Other Income	\$11,234
Investment Return	\$(647,811)

**Total Contributions, Support, and Revenue** **\$12,291,616**

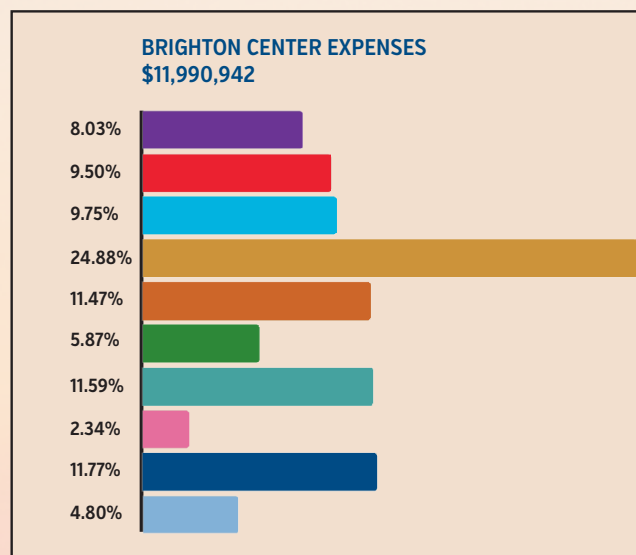
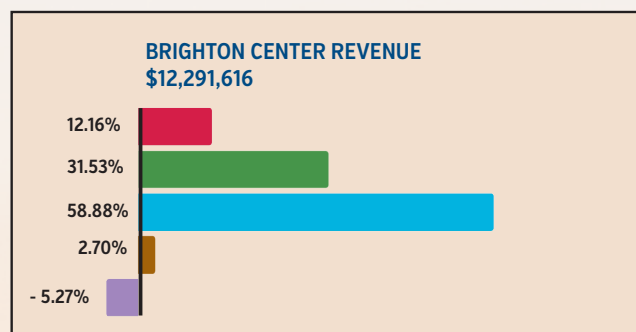
## EXPENSES - PROGRAM SERVICES

Recovery Services	\$962,732
Early Childhood Education	\$1,138,645
Youth Services	\$1,169,235
Family Center	\$2,983,452
Workforce Development	\$1,375,663
Financial Wellness and Volunteer Engagement	\$703,956
Kentucky Career Centers	\$1,389,975
<b>Total Program Service Expenses</b>	<b>\$9,723,658</b>

## EXPENSES - SUPPORTING SERVICES

Fundraising and Public Relations	\$280,522
Indirect Costs - Management and Other	\$1,411,329
Other	\$575,433
<b>Total Expenses</b>	<b>\$11,990,942</b>

Change in Net Assets	\$300,674
Net Assets, Beginning of Year	\$9,289,370
Net Assets, End of Year	\$9,590,044



\*Our financial statements audited by Barnes, Dennig & Co., Ltd. meet the auditing standards generally accepted in the United States of America and the standards applicable to financial audits contained in government auditing standards issued by the Comptroller General of the United States.

## ACCOUNTABILITY & ACCREDITATION

- Brighton Center is an accredited charity through the Better Business Bureau and meets all standards for charitable accountability, including governance and oversight, measuring effectiveness, finances, and fundraising.
- Our **Bright Days Child Development Center** is 4 STAR rated and accredited by the Association for Early Learning Leaders.
- Early Scholars Child Development Center** is 5 STAR rated.
- Brighton Center's **Center for Employment Training** is accredited by the Council on Occupational Education and is approved to receive Title IV funding from the Department of Education.
- Our **Homeward Bound Shelter** and **Independent Living Programs** are CARF accredited, demonstrating that we are guided by internationally recognized service standards and best practices.
- We are monitored by external funding sources. Our **Homeward Bound Shelter**, which serves homeless and runaway youth, and our **Bright Days Child Development Center** and **Early Scholars Child Development Center** must be compliant with the requirements of licensing.

## OUR CORE VALUES

- Everyone has **inherent worth** and **dignity** and will be treated with **respect**.
- Families and individuals we serve **know their situation best** and are able to **make decisions** that affect their lives.
- We promote strong **relationships** with families and individuals, **partnering** with them to build on their strengths and encourage them to be resources to each other and their community.
- Our dedicated staff are **passionate** about our mission, embrace **growth and leadership, change** to best meet customer needs, and are **engaged** in the life of the community.
- Our comprehensive **community based** services are **responsive, innovative, and life changing**.
- We are **accountable** for the high quality and impact of our services.
- Community-wide leadership** and **collaboration** result in stronger services and an improved quality of life for our region.
- Commitment to **diversity, inclusion, and racial equity** are imperative to the strength of our organization and community.



P.O. Box 325  
Newport, KY 41072

## ANNUAL IMPACT REPORT 2022

Non-profit Org.  
U.S. Postage  
**PAID**  
Cincinnati, OH  
Permit No. 6523

### Brighton Center, Inc., Board of Directors 2022-2023

**Dan Groneck, Chair**  
Retired, U.S. Bank

**Eric Johnson, Vice Chair**  
Grant Thornton LLP

**Dave Koeninger, Treasurer**  
Retired, Millennium Physician Group

**Alicia B. Townsend, Secretary**  
U.S. Bank

**Damon V. Allen**  
Federal Home Loan Bank of Cincinnati

**Christy Alwell**  
Pivot Realty Group

**Jacob Bartel**  
UBS Financial Services

**Ken Blackburn**  
The Procter & Gamble Company

**Bonita Brown**  
Northern Kentucky University

**Lisa Yeardon Casson**  
CommonSpirit Health

**Jennifer Ehrhardt**  
Viking Partners

**Mark Exterkamp**  
First Financial Bank

**David Fleischer**  
Alpha+Beta Strategies

**Fred Haas III**  
National Band & Tag

**Jeremy A. Hayden**  
Taft Law

**Julia Johnson**  
Retired, City of Cincinnati  
Metropolitan Sewer District

**Michael Lakin**  
Horan

**Heidi Murley, MD**  
St. Elizabeth Physicians

**Christopher Owens**  
Taylor Oswald

**Leyla Pena**  
Cincinnati Public Schools

**Laura Pleiman**  
Boone County Fiscal Court

**Annamarie Reilly**  
MCM, CPA's & Advisors

**Sophia Roberts**  
Northern Kentucky  
Scholar House Alumni

**Joe Schamer**  
SECO Electric

**Marianne Schmidt**  
PNC Bank

**Madison Smith**  
Fifth Third Bank

**Julie Sparks**  
Ernst & Young

**Tom Stoll**  
Union Savings Bank

**Jamie Wagner**  
Truist Financial

**Wanda Walker-Smith**  
Hamilton County Small Business  
Development Center

**Katie Walters**  
iHeart Media

**Ingrid Washington**  
Gateway Community & Technical  
College

**Jason Wessel**  
St. Elizabeth Healthcare

**Caroline K. Weltzer, Ex Officio**  
Viox & Viox, Inc.

### Brighton Properties, Inc., Board of Directors 2022-2023

**Caroline K. Weltzer, Chair**  
Viox & Viox, Inc.

**Brian Crecco, Vice Chair**  
Capital Construction Services

**Julie Schoepf, Treasurer**  
Dinsmore & Shohl LLP

**Ken Muth, Secretary**  
Duke Energy

**Robert Arnold**  
Thomas More University

**Aaron Anderson**  
GBBN Architects, Inc.

**Joyce Duve**  
Newport Commons Resident

**LaQuies Harrison**  
Taft Law

**Susan McDonald**  
Retired, St. Elizabeth Healthcare

**Brooks A. Parker**  
Messer Construction Co.

**Tom Stapleton**  
Retired

### Brighton Center Directory of Services

#### Administrative Offices

**President & CEO:** Wonda Winkler  
**Vice President:** Melissa Hall Sommer  
**Chief Financial & Administrative Officer:** June Miller  
**Development Director:** Lauren Copeland  
**Human Resources Director:** Mary Decker  
**Evaluation & Data Administrator:** Cassie Hitch  
**Director of Facilities & Property Management:** Tony Herms  
**Housing Development Director:** Stephanie Stiene



#### Community Resource Center

Director: Eric Owsley  
799 Ann Street  
Newport, KY 41071

#### Early Childhood Education

Director: Dellisa Ford-Edwards  
Bright Days Child Development Center  
7th & Park Ave.  
Newport, KY 41071  
Northern Kentucky Scholar House  
402 W. 6th Street  
Newport, KY 41071

#### Family Well-Being

Director: Jenny Wiley  
799 Ann Street  
Newport, KY 41071

#### Housing & Financial Wellness

Director: Ellen Bates  
799 Ann Street  
Newport, KY 41071

#### Kentucky Career Center

Operator: Lauren Allhands  
Director: Douglas Beard  
1324 Madison Avenue  
Covington, KY 41011

#### Workforce Development

Director: Jonika Greene  
Center for Employment Training  
601 Washington Avenue, Suite 140  
Newport, KY 41071

#### Recovery Services

Director: Anita Prater  
375 Weaver Road  
Florence, KY 41042  
Phone: (859) 282-9390

#### Youth Services

Director: Kate Kassiss  
13 E. 20th Street  
Covington, KY 41014  
Phone: (859) 581-1111



741 Central Avenue  
P.O. Box 325  
Newport, KY 41072-0325  
Phone: (859) 491-8303  
Fax: (859) 491-8702  
[www.brightoncenter.com](http://www.brightoncenter.com)

Brighton Center is an equal opportunity employer and service provider offering advancement to all qualified persons regardless of race, color, religion, gender, age, sexual orientation, ethnic or national origin, or disability.



Find us on social

